

FCSA's purpose is to handicap sailboats (PHRF), make up the annual schedule, sponsor an Interclub Regatta, and hold an Awards and General Meeting in January. FCSA's Board of Directors is made up of one volunteer from each of the six member clubs.

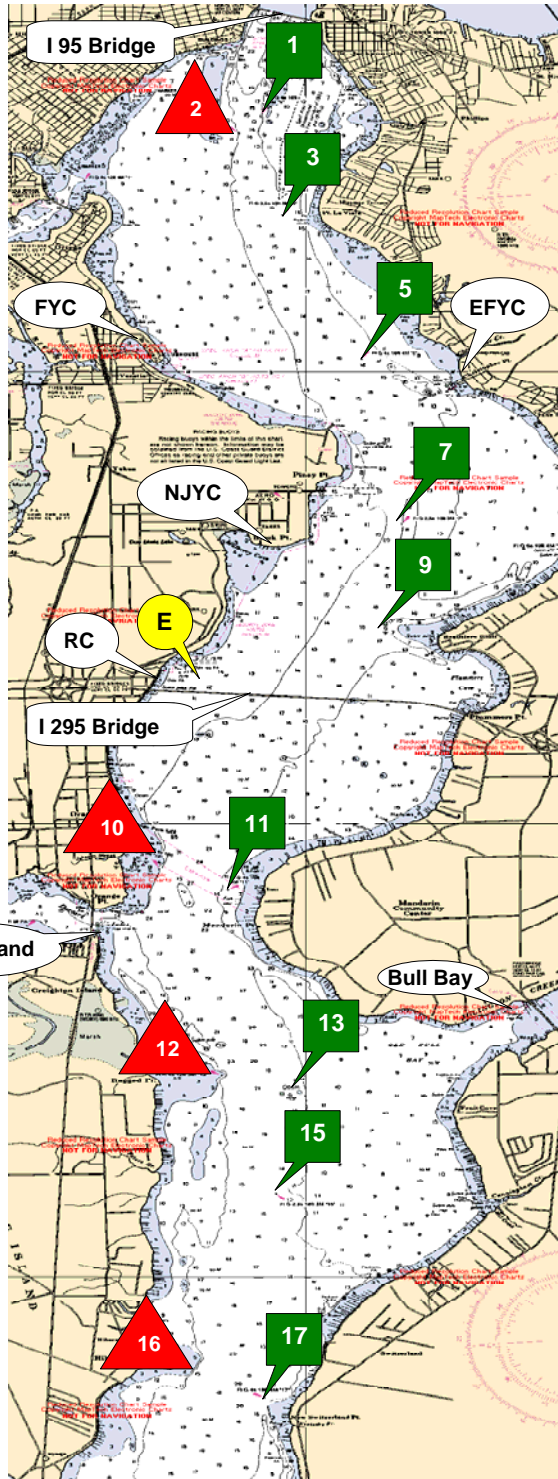
See a club handicapper to get a PHRF rating. New rating \$35, Renew by February 1st \$30, Change rating \$5.


The handicapping committee consists of one volunteer from each club and a volunteer Chief Handicapper. Requests for ratings are completed by a club handicapper and approved by the Chief Handicapper. Rating protests are submitted to the Chief Handicapper and voted on by the handicapping committee.



- 1 to 3 1.104 nm
- 1 to 5 2.787 nm
- 1 to 7 4.643 nm
- 3 to 5 1.703 nm
- 3 to 7 3.546 nm
- 5 to 7 1.863 nm
- 5 to 9 2.926 nm
- 7 to 9 1.095 nm
- 7 to E 2.240 nm
- 9 to E 1.486 nm

- 11 to 13 2.317 nm
- 11 to 15 3.400 nm
- 11 to 17 5.631 nm
- 13 to 15 1.109 nm
- 13 to 17 3.360 nm
- 15 to 17 2.252 nm



 * Marks 2, 10, 12, 16 are well placed. Do not sail out of the channel without local knowledge.

From 2009
USCG Light List

River Mark G1
N 30° 17.813
W 81° 40.411

River Mark R2
N 30° 17.628
W 81° 40.635

River Mark G3
N 30° 16.719
W 81° 40.218

River Mark G5
N 30° 15.142
W 81° 39.466

River Mark G7
N 30° 13.305
W 81° 39.077

River Mark G9
N 30° 12.216
W 81° 39.237

Race Mark "E"
N 30° 11.648
W 81° 40.822

River Mark R10
N 30° 09.513
W 81° 41.399

River Mark G11
N 30° 09.305
W 81° 40.794

River Mark R12
N 30° 07.240
W 81° 40.800

River Mark G13
N 30° 07.036
W 81° 40.224

River Mark G15
N 30° 05.926
W 81° 40.283

River Mark R16
N 30° 04.038
W 81° 41.254

River Mark G17
N 30° 03.671
W 81° 40.393

FCSA offers three series of PHRF races: the Spring Series Trophy, the Fall Series Trophy, and the Offshore Trophy. When a rated sailboat is entered in a club race, noted as a FCSA points race, the boat is competing for a club trophy for that race and points toward the annual trophy for the series.

Rules for the annual trophies:

Spring and Fall Series Trophies:
6 races each, 1 throw out race.

Offshore Series Trophies:
7 races, 1 throw out race.

Note: There will be no throw out races in a series if less than four races are held due to cancellation of races in that series.

Race scoring will be the low point system, 2009-2012 Racing Rules of Sailing, Appendix A, Rule A4.

Series scoring will be as follows:

DNF = number that started the race
DNS, RAF = number that entered and came to the race
DNC, DSQ = 1 + number that entered and came to the race
DNE = 1 + number entered in the series

Trophies divided by Spinnaker, Non-Spinnaker, and Cruising classes. All competitors must have a current FCSA PHRF rating and be a member of one of the six FCSA member clubs.

(Check FCSA Website www.sailjax.com for contacts, addresses, phone numbers of club representatives)

- EFYC - Epping Forest Yacht Club www.efyc.com
- FYC - Florida Yacht Club www.thefloridayachtclub.org
- NJYC - Navy Jax Yacht Club www.navyjaxyachtclub.com
- RC - Rudder Club www.rudderclub.com

- FCSA - First Coast Sailing Association www.sailjax.com
- NFCC - North Florida Cruising Club www.nfccsail.com
- SAYC - St Augustine Yacht Club www.sayc2000.com
- NFWSN - North Florida Women's Sailing Network www.nfwsn.com