



**HANGOVER RACE**  
**January 1, 2024**  
*The Rudder Club of Jacksonville*

**8533 Malaga Avenue Jacksonville, FL 32244**

**Notice of Race**

**1 RULES**

- 1.1 The race will be governed by *The Racing Rules of Sailing* (RRS)..
- 1.2 Rule 41 is changed such that a boat accepting assistance under Fundamental Rule 1.1 is exempt from the provisions of RRS 41 Outside Help. Capsized sailboats are encouraged to accept assistance as necessary.
- 1.3 Class boats are not racing under class rules.
- 1.4 Appendix V (One Turn Penalty) shall be in effect.

**2 ADVERTISING**

Advertising is permitted.

**3 ELIGIBILITY AND ENTRY**

- 3.1 The regatta is open to all boats of all classes.
- 3.2 Eligible boats may register on-line at <https://www.regattanetwork.com/event/27294> or electronically during late registration on 1 January.
- 3.3 There will be one Portsmouth Class.

- 4 FEES:** Registration for non-members is \$10, which includes lunch after the race.

**5 SCHEDULE**

5.1 Schedule of Events

January 1st 2024

Late Registration: 1000 -1030

Competitor's meeting: 1100

Warning signal for first class: 1155

5.2 Number of races: One race is scheduled.

**6 SAILING INSTRUCTIONS**

This Notice, and Sailing Instructions will be available on the Event Web Site at <https://www.regattanetwork.com/event/27294> and posted on the official bulletin board on the north exterior wall of the Rudder Club. Changes to the Sailing Instructions will be posted on the Event Web Site web site; and posted on the official bulletin prior to 1000 on the morning of the race. Subsequent changes will be made in the form of a Notice to Competitors. Schedule changes will be posted prior to 1900 (7:00 PM) on the day prior to the race. Oral changes may be given on the water in accordance with RRS 90.2(c).

**7 VENUE**

The racing area will be in the St. Johns River between the Buckman Bridge to the south and the Fuller Warren Bridge to the north as depicted on NOAA Chart 11492.

- 8 THE COURSES** The course to be sailed will be a windward/leeward.

**9 TIME LIMIT**

The time limit shall be 3 hours.

## **10 SAFETY**

10.1 All competitors are required to conform with the U.S. Coast Guard regulations and the RRS concerning personal floatation devices and other required equipment. All yachts are reminded that under fundamental rule 4 "A boat is solely responsible for deciding whether or not to start or to continue racing.

10.2 Boats shall not impede the passage of a vessel which can safely navigate only within a narrow channel or commercial fishing vessels while fishing or vessels with restricted ability to maneuver. Racing yachts interfering with other vessels may be subject to protest by the Race Committee or contestants and possible disqualification

## **11 ADDITIONAL INFORMATION**

11.1 For information regarding the Portsmouth Rating System see:

[DPN - US Sailing](#)

For North American Portsmouth Yardstick (NAPY) Code and Portsmouth Ratings (DPN) see:

[Portsmouth Yardstick Table of Pre-Calculated Classes - US Sailing](#)

Note: Most cruising class boats (those with a shelter of some sort are listed under Offshore Classes.

11.2 For further information please contact Rich Brew, [richbrew@att.net](mailto:richbrew@att.net)



**THE HANGOVER RACE**  
**January 1, 2024**  
***Rudder Club of Jacksonville***  
**8533 Malaga Avenue**  
**Jacksonville, FL 32244**

## **Sailing Instructions**

### **1. RULES**

- 1.1 The race will be governed by The Racing Rules of Sailing (RRS) and the prescriptions of US SAILING.
- 1.2 Racing Rule 41 is changed by SI 15.4.
- 1.3 Racing Rules 35, A4 and A5 of the RRS are changed by SI 13.2.2
- 1.4 SI 14.4 implements Appendix T, Arbitration.
- 1.5 Appendix V (One Turn Penalty) is in effect.

### **2 NOTICES TO COMPETITORS**

Notices to competitors will be posted on the official notice board on the north exterior wall of the Rudder Club.

### **3 CHANGES IN THE SAILING INSTRUCTIONS**

Any change in the Sailing Instructions will be posted on the official bulletin board on the north exterior wall of the Rudder Club before 0900 on January 1st.

### **4 SIGNALS MADE ASHORE**

- 4.1 Signals made ashore will be displayed from the flag pole located on the north side of the Rudder Club.
- 4.2 When Code Flag "AP", Answering Pennant is displayed ashore, '1 minute' is replaced with "not less than 60 minutes" in the race signal AP.

### **5 SCHEDULE OF RACE**

- 5.1 Schedule 1 January 2024
  - Registration: 10:00am - 10:30am
  - Sailors meeting: 11:00 pm
  - Warning signal for first class: 11:55 am.
- 5.2 All registered boats will race as one Portsmouth North American class.
- 5.3 There will be one race.

### **6 CLASS FLAGS**



Class flag will be the International Numeral Pennant One as depicted under Race Signals in the RRS.

### **7 RACING AREA**

The racing area will be in the St. Johns River between the Buckman Bridge to the south and the Fuller Warren Bridge to the north as depicted on NOAA Chart 11492.

### **8 THE COURSE**

The course will be a windward leeward as depicted in Attachment A and displayed on a white board on the Race committee boat. A numeral following the course description will indicate that the course is that many times around. The final leg will be from the final windward mark directly to the finish in the vicinity of the pier.

### **9 MARKS**

- 9.1 The starting mark will be a yellow cylinder set to the left of the committee boat relative to the first leg of the course.
- 9.1 The windward mark will be an orange cylinder set to windward of the starting line and designated as "W" or it will be a River Navigation Mark as depicted in attachment B.
- 9.2 The leeward mark will be the same as the starting mark and will be a yellow cylinder. It will be designated "L" on the course board.
- 9.3 The finish mark will be a small green tetrahedron (for a finish off the pier).
- 9.4 All marks will be left to port.

## **10 START**

The starting line will be between an orange flag flown on the Race Committee Boat and a yellow cylinder set toward the left side of the course from the RC boat. The starting line will be designated "S" on the course board.

## **11 CHANGE OF COURSE AFTER THE START**

11.1 To change the next leg of the course, the race committee will move the original mark to a new position.

11.2 A change of course will be signaled near the mark beginning the leg being changed by a race committee boat that will display code flag "CHARLIE" and sound a horn periodically.

## **12 THE FINISH**

The finish line will be between an blue flag on the northeast corner of the Rudder Club Pier and a green tetrahedron set off the pier or between a blue flag on the committee boat and a yellow cylinder set to its right relative to the last leg of the course. The finish line will be designated "F" on the course board.

## **13 SCORING AND TIME LIMIT**

13.1 All boats will be scored in accordance with the North American Portsmouth Yardstick.

13.2 The time limit shall be 3 hours for all boats to finish.

## **14 PROTESTS AND REQUESTS FOR REDRESS**

14.1 Protests and requests for redress shall be written on forms available at the Rudder Club. They shall be filed with the Race Officer.

14.2 The protest time limit is 90 minutes after the last boat has finished.

14.3 Protest notices will be posted on the Official Bulletin Board within 30 minutes following the protest time limit.

14.4 Appendix T, Arbitration, is in effect.

## **15 SAFETY**

15.1 All competitors are required to conform to the U.S. Coast Guard regulations and the RRS concerning personal floatation devices and other required equipment. All yachts are reminded that under fundamental rule 4 "The responsibility for a boat's decision to participate in a race or to continue racing is hers alone."

15.2 Boats shall not impede the passage of a vessel which can safely navigate only within a narrow channel. Boats interfering with other vessels may be subject to protest by the Race Committee or contestants and

possible disqualification.

15.3 In accordance with Rule 42.3(i), providing no significant advantage is gained, a boat may employ propulsion using an engine or other method to remain clear of a non-racing vessel when required by Inland Rules.

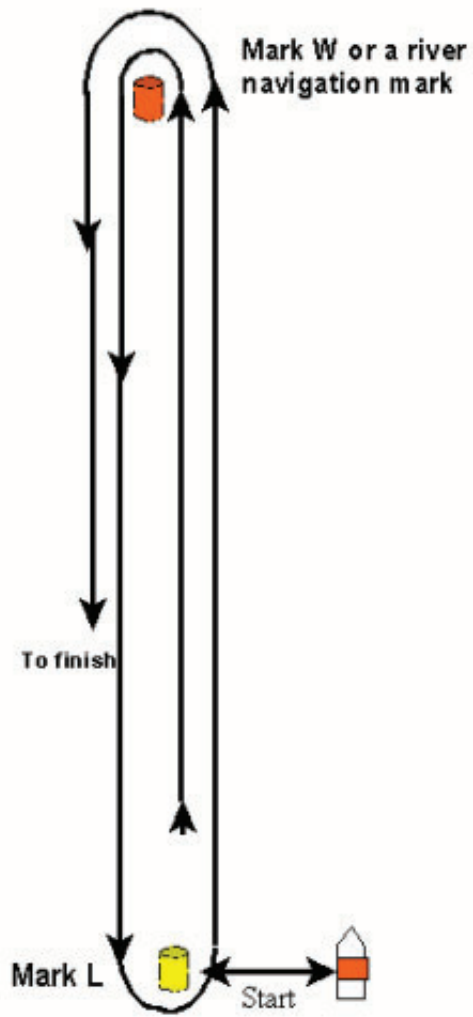
15.4 Racing Rule 41 is changed such that a boat accepting assistance under Fundamental Rule 1.1 is exempt from the provisions of RRS 41 - Outside Help. Capsized sailboats are encouraged to accept assistance as necessary.

15.5 The Race Committee boat will monitor Marine VHF Channel 78.

## **16 PRIZES**

Results will be announced and prizes presented at the Rudder Club following the race. Depending on the number of entries, prizes will be given for top Monohull boats and top Multihull boats.

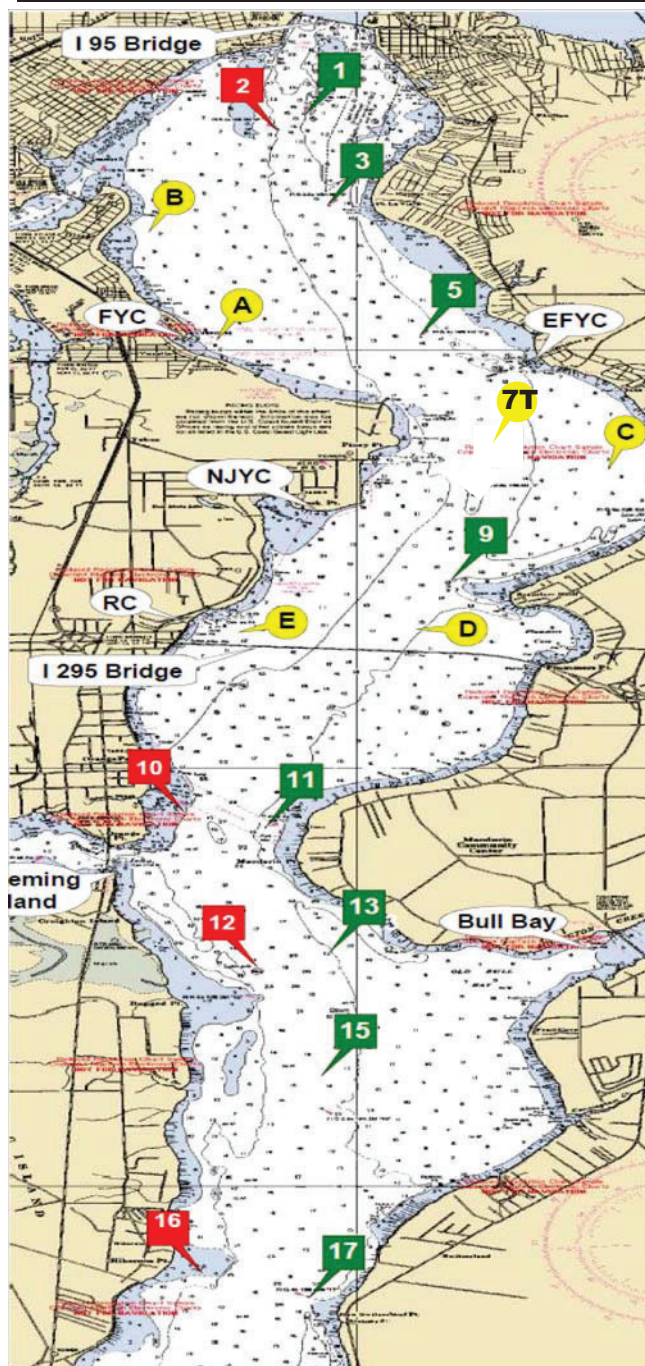
# Attachment A



XF

# First Coast Sailing Association Race Marks

Distance	nm
1 to 3	1.039
1 to 5	2.787
1 to 7T	4.643
1 to A	2.793
1 to B	1.570
3 to 5	1.773
3 to 7T	3.615
3 to 9	4.638
3 to A	1.829
3 to B	1.126
3 to C	3.763
5 to 7T	1.863
5 to 9	2.926
5 to A	1.468
5 to B	2.299
5 to C	2.029
5 to D	3.486
7 to 9	1.095
7 to C	0.977
7 to D	1.697
7 to E	2.240
9 to C	1.726
9 to D	0.618
9 to E	1.486
A to B	1.523
A to C	3.140
B to C	4.303
C to D	2.328
C to E	3.111
D to E	1.127
11 to 13	2.317
11 to 15	3.400
11 to 17	5.631
11 to 17A	6.836
13 to 15	1.109
13 to 17	3.360
13 to 17A	4.575
13 to 18	5.585
15 to 17	2.252
15 to 17A	3.467
15 to 18	4.476
17 to 17A	1.216
17 to 18	2.225
17A to 18	1.010
18 to 20	2.038



**Green 1**  
N 30° 17.813  
W 81° 40.411

**Red 2**  
N 30° 17.628  
W 81° 40.635

**Green 3**  
N 30° 16.780  
W 81° 40.259

**Green 5**  
N 30° 15.142  
W 81° 39.466

**Green 7** See Race Mark "7T"  
N 30° 13.305  
W 81° 39.077

**Green 9**  
N 30° 12.216  
W 81° 39.237

**Red 10**  
N 30° 09.513  
W 81° 41.399

**Green 11**  
N 30° 09.305  
W 81° 40.794

**Red 12**  
N 30° 07.240  
W 81° 40.800

**Green 13**  
N 30° 07.036  
W 81° 40.224

**Green 15**  
N 30° 05.926  
W 81° 40.283

**Red 16**  
N 30° 04.038  
W 81° 41.254

**Green 17**  
N 30° 03.671  
W 81° 40.393

**Green 17A**  
N 30° 02.457  
W 81° 40.522

**Red 18**  
N 30° 01.445  
W 81° 40.551

**Green 19**  
N 30° 01.335  
W 81° 40.279

**Red 20**  
N 29° 59.822  
W 81° 39.126

**\*\*Note:** If set these marks will be an inflatable mark.

**Race Mark "A"**

N 30° 15.090 W 81° 41.160

**Race Mark "B"**

N 30° 11.648 W 81° 39.522

**Race Mark "C"**

N 30° 13.564 W 81° 37.989

**Race Mark "D"**

N 30° 16.581 W 81° 41.539

**Race Mark "E"**

N 30° 11.648 W 81° 40.822

**Race Mark "7T"**

N 30° 13.305 W 81° 39.077