

THE GATOR BOWL REGATTA

Notice of Race

Race 2-3 December 2023

One Design and Portsmouth

9 December 2023 PHRF

The Rudder Club of Jacksonville

8533 Malaga Avenue Jacksonville, FL 32244, USA

1 RULES

1.1 The regatta will be governed by *The Racing Rules of Sailing* (RRS), the prescriptions of US SAILING, the rules of participating classes, and in addition for the PHRF Race by the PHRF Rules of the First Coast Sailing Association.

1.2 Racing Rule 77 is changed as follows: Except for boats racing in PHRF, Flying Scot, Thistle and Snipe classes (where class rules apply), all boats shall display on the main sail unique identification numbers. These numbers shall be in addition to class insignia and manufacturer's model number.

2 ADVERTISING Advertising is permitted.

3 ELIGIBILITY AND ENTRY

3.1 Eligible boats are those who have officially entered by completing a registration form online or during the late registration period as set forth in this Notice of Race. On-line registration will be on the U.S. Sailing Regatta Network as set forth in NOR Rule 5, Registration.

3.2 It is anticipated that for the One design and Portsmouth Race boats will be divided into the following racing classes: Flying Scot, Thistle, "A" Boat, Hobie 18, Portsmouth Monohull, and Portsmouth Multihull. Additional classes may be accommodated provided the minimum requirement of NOR Rule 3.4 is met.

3.3 PHRF boats will be divided into Spinnaker, Non-spinnaker, and Cruiser for the PHRF Race on 10 December. In the event there are insufficient boats in the Non-spinnaker and Cruiser Classes to form two separate classes, they will be raced as one class with the same start and same course. They will be scored as one class for Gator Bowl Trophies but may be scored separately for First Coast Sailing Association Fall Series trophy purposes.

3.4 A minimum of three registered boats is necessary to constitute a class.

3.5 PHRF class boats are required to have a current PHRF rating certificate issued by the First Coast Sailing Association.

4 SCHEDULE OF EVENTS

4.1 SATURDAY 2 December - One design, and Portsmouth classes. Three races are planned.

0930-1045: Late Registration

1100: Competitor's meeting. (Attendance is optional for those entries that have in their possession a copy of the sailing instructions and have registered on-line prior to 2 December.)

1155: Warning signal for first class

Dinner - After racing

4.2 SUNDAY 3 December - Two one-design/Portsmouth races are planned.

0955: Warning signal for first one design class. *Note - No one design starting sequence will be commenced after 1330 (1:30 pm).

4.3 SATURDAY 9 December

1000 -1115: PHRF Late Registration

1130: PHRF Competitors meeting (Attendance is optional for those entries that have in their possession a copy of the sailing instructions and have registered on-line prior to 9 December.) One race is planned; however, additional races for spinnaker and non-spinnaker classes may be conducted.

1255: Warning signal for PHRF classes and race. Food and refreshments are available for all participants following racing.

5 REGISTRATION

5.1 Boats are encouraged to register on the Gator Bowl Official Web Site at:

One design/Portsmouth on Saturday and Sunday

2 & 3 December:

<https://www.regattanetwork.com/event/27065>

PHRF on Saturday 9 December:

<https://www.regattanetwork.com/event/27066>

5.2 Boats that have not registered online will be given an opportunity to late register online during the late registration periods on Saturday and Sunday.

5.3 A list of entries may be viewed on the Official Web Sites above.

6. FEES

6.1 The Entry Fee for one design classes and Portsmouth classes is \$50.00. This includes the \$38.00 race registration fee and one \$12.00 dinner ticket.

6.2 The entry fee for Rudder Club members is in accordance Rudder Club By-Laws but does not include

a dinner ticket. Tickets may be purchased in accordance with 6.5 below.

6.3 The Entry Fee for PHRF Race is \$30.00 which includes a \$30.00 race registration fee. For non-Rudder Club Members who have registered for the One Design/Portsmouth event, there is no additional fee for the PHRF Race; however re-registration is required.

6.4 There is a late registration fee of \$10 for same day race registration.

6.5 Additional Saturday Night 2 December Dinner Tickets may be purchased for \$12.00.

7 SAILING INSTRUCTIONS This notice and sailing instructions will be available on event web sites as follows: One Design/Portsmouth – <https://www.regattanetwork.com/event/27065> PHRF: <https://www.regattanetwork.com/event/27066> and posted on the official bulletin board on the north exterior wall of the Rudder Club. Changes to this notice or the Sailing Instructions will; posted on the event web sites as above; posted on the official bulletin prior to 1000 on the morning of each race and be distributed by e-mail to those on-line entrants registering with an e-mail address. Subsequent changes will be made in the form of a Notice to Competitors. Schedule changes will be posted prior to 1900 (7:00 PM) on the day prior to the race. Oral changes may be given on the water in accordance with RRS 90.2(c).

8 REGATTA SITE The regatta site will be the Rudder Club of Jacksonville Inc.

9 RACING AREA The racing area will be in the St. Johns River as depicted on NOAA Chart 11492 between the Buckman Bridge to the south and the Fuller Warren Bridge to the north

10 COURSES This will be as shown in an addendum to the Sailing Instructions. The course to be sailed for each race will be displayed from a white board on the Race Committee Boat.

11 SCORING One race is necessary to constitute a series. When fewer than 6 races have been completed a boat's series score will be the total of her race scores. When six or more races have been completed, a boat's score will be the total of all her scores excluding her worst score. Flying Scots participating in the FSSA District Series will be scored in accordance with FSSA rules in addition to being scored for the Gator Bowl.

12 PENALTY TURNS Rule V1 (Appendix V), the One-Turn Penalty Rule, will be in effect.

13 PRIZES First through fifth place prizes will be awarded for classes of more than fifteen boats. First, second, and third place prizes will be awarded in classes of more than five finishing boats. First and second place prizes will be awarded in classes of four to five finishing boats. A first-place prize will be awarded in classes of three or less finishing boats. One Design and Portsmouth Trophies will be awarded following racing on Sunday 3 December 2021. Trophies for the PHRF race will be presented at the Rudder Club following the event.

14 PARTICIPATION Sailing is an activity that has an inherent risk of damage and injury. Competitors in this regatta are participating entirely at their own risk. See RRS 4, Decision to Race. Completion and submission of a registration form for this regatta constitute an acceptance of and agreement to abide by the Racing Rules of Sailing, this Race Notice and the Sailing Instructions.

15 ELECTRONIC DEVICES

15.1 Use of radios and other electronic devices by boats in the Flying Scot and Thistle Classes will be in accordance with class rules.

15.2 PHRF and Portsmouth boats with DSC capable VHF radios are encouraged to have obtained a Mobile Marine Service Identity (MMSI) number http://www.cruisingclub.org/pdfs/safety_dsc_distress_comm_form.pdf and have their VHF radio connected to their GPS

16 FURTHER INFORMATION

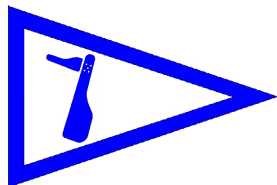
For further information, please contact: Jonathan Hamilton, jon.hamilton4@comcast.net, 904-635-0270 or Tom Davis spookboat@att.net .

Browser codes:

One Design/Portsmouth –

<https://www.regattanetwork.com/event/27065>

PHRF: <https://www.regattanetwork.com/event/27066>



THE GATOR BOWL REGATTA

December 9 2023

The Rudder Club of Jacksonville

8533 Malaga Avenue

Jacksonville, FL 32244, USA

PHRF RACE SAILING INSTRUCTIONS

1 RULES

- 1.1 The race will be governed by the rules as defined in the current Racing Rules of Sailing (RRS), and the rules of the First Coast Sailing Association.
- 1.2 Racing Rules A4 and A5 are changed by SI 10.4 as follows: "A boat starting later than five minutes after her starting signal will be scored "Did Not Start" without hearing."
- 1.3 Racing rules 35, A4, and A5 of the RRS are changed by SI 13.1 as follows: "A boat failing to finish within 30 minutes corrected time after the first boat in her class will be scored 'Did not Finish' without a hearing".

2 NOTICES TO COMPETITORS

Official notices to competitors will be posted on the official notice board located on the north exterior wall of the Rudder Club. Notices may also be published on the Event Web Site at:

<https://www.regattanetwork.com/event/27066>

3 CHANGES IN THE SAILING INSTRUCTIONS

- 3.1 Changes to the Sailing Instructions will be posted on the official bulletin board on the north exterior wall of the Rudder Club prior to 1200 on the day of the race and on the event web site. Time permitting, they will also be distributed by e-mail to those on-line entrants with an e-mail address provided on the registration form on Regatta Network.
- 3.2 Oral changes to the Sailing Instructions may be communicated to each boat while on the water and prior to her warning signal.

4 SIGNALS MADE ASHORE

- 4.1 Signals made ashore will be displayed from the flag pole located on the north side of the Rudder Club.
- 4.2 When AP is displayed ashore "1 minute" is replaced with "not less than 45 minutes" in the race signal AP.
- 4.3 Signals made ashore will also be relayed on Marine VHF Channel 78(US)

5 SCHEDULE OF RACES

- 5.1 Depending on wind conditions one race using FCSA and river navigation marks or three, windward/leeward, round-the-buoy races may be conducted.
- 5.2 Schedule:
Saturday 9 December 2023 - PHRF Race,
1100 – 1130 - PHRF Late Registration
1200 - Competitors' Meeting (Optional for those registering on line and possessing a copy of the Sailing Instructions).
1300 - Warning signal for first class.

6 CLASS FLAGS

Class flags will be the International Numeral Pennants as depicted in the RRS

Class	Flag	
Spinnaker	P1	
Non-Spinnaker	P2	
Cruiser	P3	

7 RACING AREA

The racing area will be in the St. Johns River between the Buckman Bridge to the south and the Fuller Warren Bridge to the north as depicted on NOAA Chart 11492.

8 THE COURSE

- 8.1 Race course for PHRF Classes will be displayed from a course board on the committee boat.
- 8.2 Round the mark races will be designated as shown in Attachment A.
- 8.3 A single race using river navigation and FCSA marks will be displayed using the numerical designation of the Race Marks as depicted in Attachment B.
- 8.2 If the Race Committee sets an offset mark in the vicinity of the windward mark, boats shall sail around both marks leaving them on the prescribed side.
- 8.3 If a leeward gate is not set, boats shall round the single leeward mark leaving it to port.

9 MARKS

- 9.1 Round-the-buoy marks 1, 2S, and 2P will be yellow cylinders. Mark 1L will be an orange cylinder. Mark 1L off-set will be a yellow tetrahedron. A new mark laid in accordance with Change of Course procedures will be an orange cylinder.
- 9.2 River marks may be government navigation marks as depicted on NOAA Chart 11492 (as corrected by Notices to Mariners), or FCSA Race Marks. Government marks will be designated by their number as appearing on the chart. FCSA marks will be designated by their Alphabetic designator. Approximate positions are shown in Appendix B.
- 9.3 An orange cylinder set to windward of the starting line as a windward mark will be designated "W", WHISKEY. This provision applies to both course configurations.
- 9.4 If an offset mark is set at Mark W, the offset mark will be a yellow tetrahedron. Boats shall sail around both marks leaving them to port.
- 9.5 A limiting mark may be set to protect the committee boat close to her and on the same end of the starting line. No boat shall

pass between the limiting mark and the committee boat.

10 START

- 10.1 The Starting Line will be a line between an orange flag flown on the Race Committee/Signal Boat and a small red tetrahedron set toward the left side of the course from the Committee Boat.
- 10.3 Boats whose warning signal has not been made shall remain clear of the starting area while other boats are in their start sequence.
- 10.4 A boat starting later than five minutes after her starting signal will be scored "Did Not Start" without hearing. This changes Rules A4 and A5.

11 CHANGE OF COURSE AFTER THE START

To change the position of the next mark, the race committee will move the original mark (or the finishing line) to a new position. The change will be signaled before the leading boat has begun the leg, although the mark may not yet be in the new position. Any mark to be rounded after rounding the moved mark may be relocated without further signaling to maintain the course configuration.

12 THE FINISH

The Finish Line will be between a blue flag flown on the Race Committee Boat and a small lime green tetrahedron set to the left side and perpendicular relative to the final leg of the course.

13 TIME LIMIT

- 13.1 The time limit shall be 90 minutes for each class for round the buoy races WL and WS. Boats failing to finish within 30 minutes corrected time after the first boat of their class finishes will be scored "Did not Finish." This changes rule 35 and rule A41.
- 13.2 If a single river race is signaled, the time limit will be 3 hours. Boats failing to finish within 45 minutes corrected time after the first boat of their class finishes will be scored "Did not Finish." This changes rule 35 and rule A41.

14 PROTESTS AND REQUESTS FOR REDRESS

- 14.1 Protests shall be written on forms available at the Rudder Club. They shall be filed with the Regatta Chairman. Protest time will end 90 minutes after the last boat has finished the last race of the day. Protests will be heard in the approximate order received.
- 14.2 Protest notices will be posted on the Official Bulletin Board within 30 minutes following the protest time limit.
- 14.3 RRS Appendix T, Arbitration, is in effect.

15 PENALTIES Rule V1 (Appendix V), the One-Turn Penalty Rule, will be in effect.

16 SAFETY

- 16.1 The Race Committee boat and Race Support boats will maintain a listening watch on Marine VHF Channel 78.
- 16.2 Boats shall attempt to check in with the Race Committee by sailing past on the non-course side prior to their class Warning Signal.
- 16.3 Boats withdrawing from a race prior to finishing shall make every effort to ensure that Race Committee is notified that they have dropped out
- 16.4 All competitors are required to conform to the U.S. Coast Guard regulations and the

RRS concerning personal floatation devices and other required equipment.

- 16.5 Boats shall not impede the passage of a vessel which can safely navigate only within a narrow channel, and shall give way to commercial fishing vessels while fishing or vessels with restricted ability to maneuver.
- 16.6 In accordance with Rule 42.3(i), providing no significant advantage is gained, a boat may employ propulsion using an engine or other method to remain clear of a non-racing vessel when required by Inland Rules.

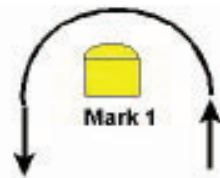
17 SCORING

- 17.1 PHRF Classes will be scored using PHRF Time on Time
- 17.2 One race must be completed to constitute a series.

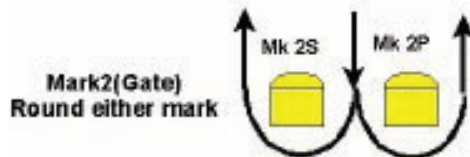
17 PRIZES

Results will be announced at the Rudder Club following the race. First, second, and third place prizes will be awarded in classes of more than five finishing boats. First and second place prizes will be awarded in classes of four to five finishing boats. A first place prize will be awarded in classes of three or less finishing boats.

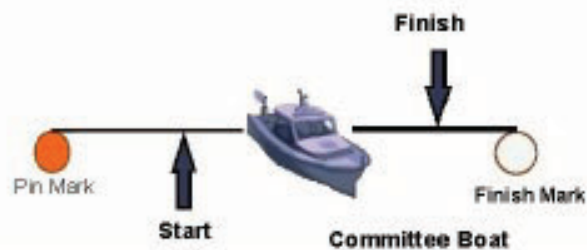
Round –the-Buoy Courses (Attachment A)



Not to Scale



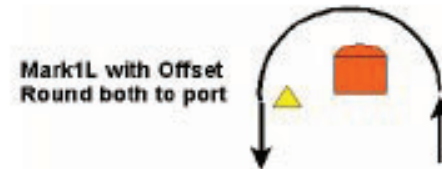
Mark2(Gate)
Round either mark



Windward Leeward Short

WS

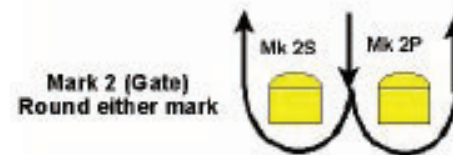
Course Start, 1, 2P or 2S, 1, Finish



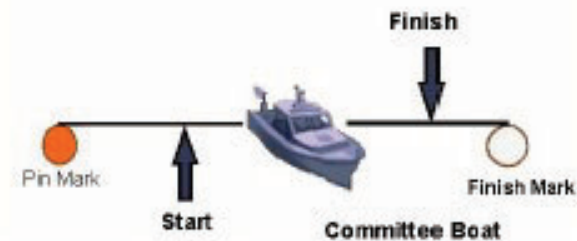
Mark1L with Offset
Round both to port



Not to Scale



Mark 2 (Gate)
Round either mark



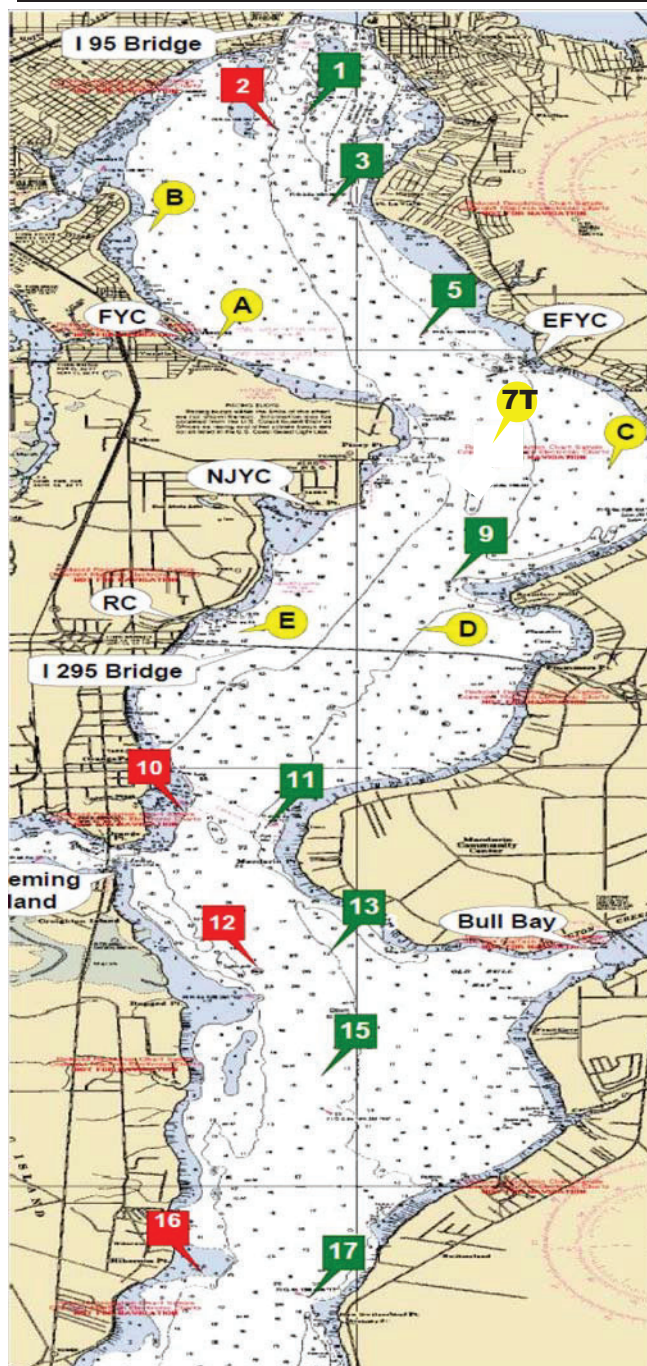
Windward Leeward Long

WL

Course Start, 1L, 2P or 2S, 1L, Finish

First Coast Sailing Association Race Marks

Distance	nm
1 to 3	1.039
1 to 5	2.787
1 to 7T	4.643
1 to A	2.793
1 to B	1.570
3 to 5	1.773
3 to 7T	3.615
3 to 9	4.638
3 to A	1.829
3 to B	1.126
3 to C	3.763
5 to 7T	1.863
5 to 9	2.926
5 to A	1.468
5 to B	2.299
5 to C	2.029
5 to D	3.486
7 to 9	1.095
7 to C	0.977
7 to D	1.697
7 to E	2.240
9 to C	1.726
9 to D	0.618
9 to E	1.486
A to B	1.523
A to C	3.140
B to C	4.303
C to D	2.328
C to E	3.111
D to E	1.127
11 to 13	2.317
11 to 15	3.400
11 to 17	5.631
11 to 17A	6.836
13 to 15	1.109
13 to 17	3.360
13 to 17A	4.575
13 to 18	5.585
15 to 17	2.252
15 to 17A	3.467
15 to 18	4.476
17 to 17A	1.216
17 to 18	2.225
17A to 18	1.010
18 to 20	2.038



Green 1
N 30° 17.813
W 81° 40.411

Red 2
N 30° 17.628
W 81° 40.635

Green 3
N 30° 16.780
W 81° 40.259

Green 5
N 30° 15.142
W 81° 39.466

Green 7 See Race Mark "7T"
N 30° 13.305
W 81° 39.077

Green 9
N 30° 12.216
W 81° 39.237

Red 10
N 30° 09.513
W 81° 41.399

Green 11
N 30° 09.305
W 81° 40.794

Red 12
N 30° 07.240
W 81° 40.800

Green 13
N 30° 07.036
W 81° 40.224

Green 15
N 30° 05.926
W 81° 40.283

Red 16
N 30° 04.038
W 81° 41.254

Green 17
N 30° 03.671
W 81° 40.393

Green 17A
N 30° 02.457
W 81° 40.522

Red 18
N 30° 01.445
W 81° 40.551

Green 19
N 30° 01.335
W 81° 40.279

Red 20
N 29° 59.822
W 81° 39.126

****Note:** If set these marks will be an inflatable mark.

Race Mark "A"

N 30° 15.090 W 81° 41.160

Race Mark "B"

N 30° 11.648 W 81° 39.522

Race Mark "C"

N 30° 13.564 W 81° 37.989

Race Mark "D"

N 30° 16.581 W 81° 41.539

Race Mark "E"

N 30° 11.648 W 81° 40.822

Race Mark "7T"

N 30° 13.305 W 81° 39.077