

Racing Association of Single Handers Regatta #4, 11/21/2020

Once again the wind and water call,
Let us enjoy sailing, all!
Another fun filled day with friends
and buds,
Followed by good food and Suds!
Grog, the sailors delight for all,
To help you enjoy the speeding crawl,
Wind, wave and spray on a sunny
day.
It is time to grab your helm,
Showing the smooth touch that wins
the day,
Come! It is time to go play,
In the wind, water, and spray!



4746 San Juan Avenue Telephone:(904) 384-3102
Jacksonville, Florida 32210 www.winddancersailmakers.com



Racing Association of Single Handers

Regatta #4, 11/21/2020

1.0 RULES

1.1 Sailing vessels participating in this event are to follow the inland navigation rules (Rules of the Road) of navigation. That's the only rule! Well...set of rules.

2.0 ELIGIBILITY AND ENTRY

2.1 The regatta is open to boats of all classes. If it floats and has a sail you're invited to participate!

2.2 Eligible boats may enter by completing registration (below) with Alex Madsen: dralexmadsen@gmail.com or just bring the registration form and money to the pre-race meeting! You can also mail the money to Alex Madsen, 4762 Cambridge Road, Jacksonville, FL 32210! Or take it to WindDancer Sailmakers LLC (4746 San Juan Ave, Jacksonville, FL 32210). He'll get it to Alex.

2.3 All boats will race in a single class using a rating system parallel to the FCSA PHRF by the 'The Handicapper'. Just show up and sail! The Sailing Gods will take care of the rest. That and some beer money for committee boat!

3.0 CLASSES

3.1 If it floats and has a sail, it's classy. All boats will race in a single class under a rating system parallel to the FCSA PHRF system created by the 'The Handicapper' (Adam Norwood – blame him!). If you want to throw out a spinnaker, good luck with that. We'll try to save you if we can, but we suggest a backup survival plan. Your rating will change to spinnaker.

4.0 SCHEDULE OF EVENTS

4.1 November 21st 2020, Registration at or near Green Marker 5: 10:30-ish (don't despair if the committee boat arrives late!); 11:00 Competitors Meeting; 11:55 A.M. Five Minute Warning Signal; 12:00 Start.

5.0 ENTRY FEE/REGISTRATION

5.1 Entry fee is **FREE** if registering before race day. Mail checks payable to Alex Madsen, 4762 Cambridge Road, Jacksonville, FL 32210 accompanied by an entry form (Standard Race Entry Form available at <http://www.sailjax.com> or below (last page)). Boats may also register between the hours of 10:00 a.m. thru 11:00a.m. (or whenever the committee boat shows up) on the day of the race. Race day registration is \$30.00.

6.0 SAILING INSTRUCTIONS

6.1 Changes to sailing instructions will be available on Race Day! In fact, we usually do not provide any until everyone is registered. Then we wait to see if there's wind enough, then we choose the direction your vessel must travel (and sometimes we sound a bit inebriated but it's just the radio waves!)

7.0 COURSE

7.1 The Course will start at or near Green Marker 5 of the St Johns River will be published in the Sailing Instructions or as changes thereto and signaled on the water by VHF or white board (we usually forget to bring this). Monitor VHF 68 before the race for any last-minute changes. See Map Below for reference.

8.0 SAFETY

Racing Association of Single Handers

Regatta #4, 11/21/2020

8.1 Rules of the Road apply, and all other applicable state and government regulations. Pay your Taxes!

8.2 Persons in charge with limited single handing experience are cautioned to withdraw if conditions are not favorable, lest Rán have her way with you. Just make sure your rigging can handle a day of 30-40 kt gusts if we happen to enjoy such conditions during a regatta.

8.3 It is mandatory that all participants wear a lifejacket or inflatable vest. A floating beer cooler tied to your waist works as well too! And, as you drink the beer waiting for your rescue, the cooler's buoyancy increases! It's a win-win in a losing situation. Unless you run out of beer and your buzz wears off before help arrives!

9.0 RACE PRIZES

9.1 First, Second and Third Place prizes will be awarded at the finish line after the race unless we spent all the money on food and beer! Either a Dollar Tree surprise or a warm, "Thank you. Would you like a refill."



FIRST COAST SAILING ASSOCIATION

Standard Entry Form for Yacht Racing

Race _____ Race _____
Date _____

Yacht Name _____ Sail # _____

Yacht Make _____ Length _____ Color _____
Hull/Trim _____ / _____

Owner _____ Home Phone _____

Skipper _____ Work Phone _____

Cell Phone _____ Vessel Docked at _____

E-mail for Results _____

Mailing Address Street _____

Mailing Address City, St, Zip _____

Emergency Contact _____ Phone _____

Names of Crew _____

Names of Crew _____

Yacht Club Membership _____ US Sailing # _____

Class Entered: - PHRF Spinnaker
 - PHRF Non-Spinnaker PHRF Rating _____
 - PHRF Cruiser
 - One Design Class _____ Portsmouth Rating _____

THE UNDERSIGNED, for and on behalf of himself/herself, his/her guests, and the members of the crew of his/her yacht, agrees to be bound by the Racing Rules of Sailing and by all other rules that govern this event; and hereby assumes all risk of accident and expressly agrees that the sponsoring yacht club shall not be liable, under any circumstance, for any loss or injury to participants or others, or the loss or damage to any yacht. The undersigned further agrees to indemnify and does hereby indemnify and hold the sponsoring yacht club and First Coast Sailing Association free and harmless from and against any and all losses, costs, damages, attorney's fees, and liability of any kind or nature whatsoever growing out of or resulting from participation in this event.

Signature _____ Date _____

Refer to Race Announcement for entry fee and registration instructions.

Race Schedule and Race Announcements may be downloaded from the FCSA website: www.sailjax.com

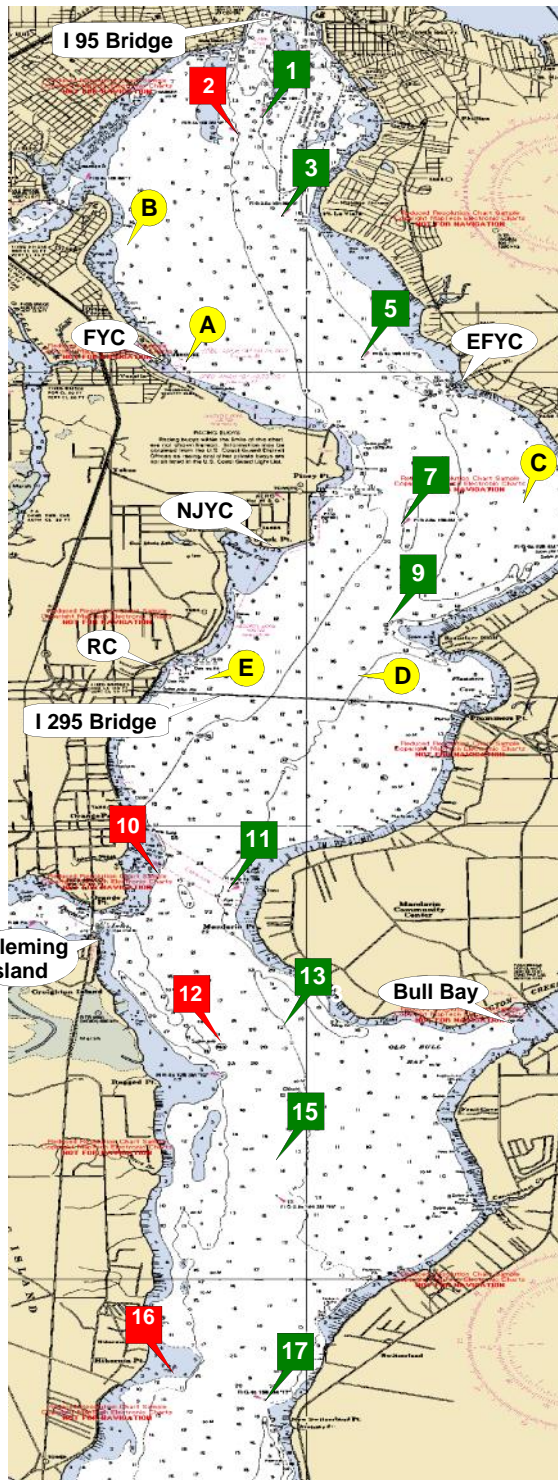
FCSA's purpose is to handicap sailboats (PHRF), make up the annual schedule, sponsor an Interclub Regatta, and hold an Awards and General Meeting in January. FCSA's Board of Directors is made up of one volunteer from each of the eight member clubs.



See a club handicapper to get a PHRF rating. New rating \$35, Renew by February 1st \$30, Change rating \$5.

The handicapping committee consists of one volunteer from each club and a volunteer Chief Handicapper. Requests for ratings are completed by a club handicapper and approved by the Chief Handicapper. Rating protests are submitted to the Chief Handicapper and voted on by the handicapping committee.

Distance	nm
1 to 3	1.039
1 to 5	2.787
1 to 7	4.643
1 to A	2.793
1 to B	1.570
3 to 5	1.773
3 to 7	3.615
3 to 9	4.638
3 to A	1.829
3 to B	1.126
3 to C	3.763
5 to 7	1.863
5 to 9	2.926
5 to A	1.468
5 to B	2.299
5 to C	2.029
5 to D	3.486
7 to 9	1.095
7 to C	0.977
7 to D	1.697
7 to E	2.240
9 to C	1.726
9 to D	0.618
9 to E	1.486
A to B	1.523
A to C	3.140
B to C	4.303
C to D	2.328
C to E	3.111
D to E	1.127
11 to 13	2.317
11 to 15	3.400
11 to 17	5.631
11 to 17A	6.836
13 to 15	1.109
13 to 17	3.360
13 to 17A	4.575
13 to 18	5.585
15 to 17	2.252
15 to 17A	3.467
15 to 18	4.476
17 to 17A	1.216
17 to 18	2.225
17A to 18	1.010
18 to 20	2.038



From 2011
USCG Light List

Green 1
N 30° 17.813
W 81° 40.411

Red 2
N 30° 17.628
W 81° 40.635

Green 3
N 30° 16.780
W 81° 40.259

Green 5
N 30° 15.142
W 81° 39.466

Green 7
N 30° 13.305
W 81° 39.077

Green 9
N 30° 12.216
W 81° 39.237

Red 10
N 30° 09.513
W 81° 41.399

Green 11
N 30° 09.305
W 81° 40.794

Red 12
N 30° 07.240
W 81° 40.800

Green 13
N 30° 07.036
W 81° 40.224

Green 15
N 30° 05.926
W 81° 40.283

Red 16
N 30° 04.038
W 81° 41.254

Green 17
N 30° 03.671
W 81° 40.393

Green 17A
N 30° 02.457
W 81° 40.522

Red 18
N 30° 01.445
W 81° 40.551

Green 19
N 30° 01.335
W 81° 40.279

Red 20
N 29° 59.822
W 81° 39.126

FCSA offers three series of PHRF races: the Spring Series Trophy, the Fall Series Trophy, and the Offshore Trophy. When a rated sailboat is entered in a club race, noted as a FCSA points race, the boat is competing for a club trophy for that race and points toward the annual trophy for the series.

Rules for the annual trophies:

Spring and Fall Series Trophies:
6 races each, 1 throw-out race.

Offshore Series Trophies:
14 races, 7 throw-out races.

Note: There will be no throw out races in a series if less than four races are held due to cancellation or abandonment of races in that series.

Race scoring will be the low point system, 2012-2016 Racing Rules of Sailing, Appendix A, Rule A4.

Series scoring will be as follows:

DNF, RAF = # that started the race
DNS, DSQ = # that came to the start
DNC = # that attempted to race
DNE = # entered in the series + 1
Ties decided under Appendix A8.

Trophies divided by Spinnaker, Non-Spinnaker, and Cruising classes. All competitors must have a current FCSA PHRF rating and be a member of one of the seven FCSA member clubs.

Also From 2011
USCG Light List

Race Can "C"
N 30° 13.564
W 81° 37.989

Race Can "A"
N 30° 15.090
W 81° 41.160

Race Can "D"
N 30° 11.648
W 81° 39.522

Race Can "B"
N 30° 16.581
W 81° 41.539

Race Can "E"
N 30° 11.648
W 81° 40.822

(Check FCSA Website www.sailjax.com for contacts, addresses, phone numbers of club representatives)

- EFYC - Epping Forest Yacht Club www.efyc.com
- FYC - Florida Yacht Club www.thefloridayachtclub.org
- NJYC - Navy Jax Yacht Club www.navyjaxyachtclub.com
- RCoJ - Rudder Club www.rudderclub.com

- NFCC - North Florida Cruising Club www.nfccsail.com
- SAYC - St Augustine Yacht Club www.staugustineyachtclub.com
- HRYC - Halifax River Yacht Club www.hryc.com
- SYC - Smyrna Yacht Club www.smyrnayachtclub.com