

LABOR DAY REGATTA
5-6 September One Design/Portsmouth
12 September 2020 PHRF
The Rudder Club of Jacksonville
8533 Malaga Avenue
Jacksonville, FL 32244, USA

Notice of Race

1 RULES

- 1.1 The regatta will be governed by the rules as defined in *The Racing Rules of Sailing* (RRS), the scoring rules of Portsmouth North America and the PHRF rules of the First Coast Sailing Association.

2 ADVERTISING

Advertising shall not be displayed.

3 ELIGIBILITY AND ENTRY

- 3.1 Eligible yachts are those who have officially entered by completing a registration form on-line or on-line during the late registration period as set forth in this Notice of Race.
- 3.2 One design boats and Portsmouth boats may register on line through 5 September on the event web site at <http://www.regattanetwork.com/event/20214>.
- 3.3 PHRF entrants may register through 12 September on the US SAILING Regatta Network on the event web site at <http://www.regattanetwork.com/event/20216>.
- 3.4 Boats not registering on line may register during the Late Registration periods shown in NOR Article 5, Schedule of Events.
- 3.5 For the OneDesign/Portsmouth races on 5 - 6 Sept, it is anticipated that boats will be divided into the following racing classes: Flying Scot, Hobie 16, Hobie 18, Thistle, Laser, Pico, Portsmouth mono-hull, and Portsmouth multi-hull. Additional classes may be accommodated provided the minimum requirement of Rule 3.6 is met. Classes for the PHRF race on 12 September will be PHRF Spinnaker, PHRF Non-spinnaker and PHRF Cruiser. Non-PHRF rated cruising and sport boats are welcome to participate in the Portsmouth races on Saturday and Sunday. Registration in accordance with 3.2.
- 3.6 A minimum of three registered boats is necessary to constitute a class.
- 3.7 PHRF class boats are required to have a current PHRF rating certificate issued by the First Coast Sailing Association.

4 FEES

- 4.1 Registration Fee: On line registration for all classes \$30.00 (Rudder Club members in accordance with Rudder Club provisions. Place charge on Rudder Club Bill.).

- 4.3 Boats intending to race both Portsmouth on 5 - 6 Sept as well as the race for PHRF rated boats on Sunday 12 Sept need pay only one registration fee of \$30. When registering for the One Design/Portsmouth Regatta, indicate on the registration form your intent to race the PHRF Regatta; then for those who have already registered for the Saturday and Sunday events, register for the PHRF Regatta on line and select your special registration type at the top of the registration page.

- 4.4 Boats intending to race only with the Portsmouth Class should register on line in accordance with NOR article 3.2.

5 SCHEDULE OF EVENTS

- 5.1 **SATURDAY 5 September 2020** - One design, and Portsmouth classes. Three races are anticipated.
- 1000 – 1130: Late registration
1140: Competitor's meeting
1255: Warning signal for first class
1730: Party. One entrant per registration. \$5.00 for additional entrants. (Rudder Club members in accordance with Rudder Club provisions)
Everybody is invited.
- 5.2 **SUNDAY 5 September 2020** – One design and Portsmouth class racing continues. Two races are anticipated. Warning Signal for first class 0955
- 5.3 **SUNDAY 12 September 2020 - PHRF Classes:**
1200 – 1330: PHRF Late Registration
1340 - Competitors' Meeting (Optional for those registering on line and holding a copy of the Sailing Instructions.)
1455: Warning signal for first class.

6 SAILING INSTRUCTIONS

This notice, the sailing instructions and changes thereto will be available on the event web sites listed in NOR articles 3.2 and 3.3; on Sailjax.com, and posted on the official bulletin board on the north exterior wall of the Rudder Club. Changes to this notice or the Sailing Instructions will be distributed by e-mail to those on-line entrants registered with an e-mail address; posted on the official bulletin board on the North Wall of the

Rudder Club and posted on the official notice boards on respective web sites. Changes will be posted prior to 1000 on the morning of each race. Subsequent changes will be made in the form of a Notice to Competitors. Schedule changes will be posted prior to 1900 (7:00 PM) on the day prior to the race. Oral changes may be given on the water in accordance with RRS 90.2(c).

7 VENUE

The regatta site will be at the Rudder Club of Jacksonville Inc. Parking within the fence at the Rudder Club is reserved for Rudder Club members only. Guests of members and visiting sailors are requested to park in the parking area outside the fence.

8 RACING AREA

The racing area will be in the St. Johns River as depicted on NOAA Chart 11492 between the Buckman Bridge to the south and the Fuller Warren Bridge to the north.

9 COURSES

Courses will be as shown in an addendum to the Sailing Instructions and on the Official Bulletin Board. Courses will be displayed from a board displayed on the Race Committee Boat.

10 SCORING

For the One Design, Portsmouth races a boat's series score will be the total of her race scores. When six or more races have been completed, a boat's series score will be the total of her race scores excluding her worst score. One race is

necessary to constitute a series.

11 PRIZES

First, second, and third place prizes will be awarded in classes of more than five finishing yachts. First and second place prizes will be awarded in classes of four to five finishing yachts. first place prize will be awarded in classes of three or less finishing yachts. One design trophies will be awarded following racing on Sunday 6 September 2020. Cruiser trophies will be awarded following racing on Saturday 12 September 2020.

12 DISCLAIMER OF LIABILITY

Serious accidents occasionally occur during yacht racing events and participants in yacht racing may sustain mortal or serious injuries and/or property damage as a consequence thereof. By registering, the person in charge (skipper) knowingly assumes the risks of yacht racing. The decision for a boat to participate in a race or continue racing is that of the person in charge's alone. It is the responsibility of the person in charge to obtain a signed release from each member of his or her crew before the race begins. By entering the race the person in charge agrees to abide by the rules, regulations and sailing instructions of the Labor Day Regatta, the ISAF and the United States Sailing Association. Minors must present a copy of the registration form signed by a parent or guardian before being allowed to participate as a person in charge.

13 FURTHER INFORMATION

For further information, please contact:
The Race Office at raceoffice@rudderclub.com

Quick Response Codes - Read the following on your Barcode Reader App for On-line registration or latest Regatta Information .

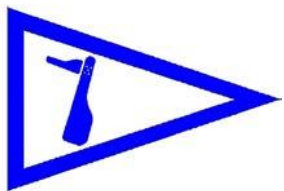
One design/Portsmouth



Phrf



<http://www.regattanetwork.com/event/20214> <http://www.regattanetwork.com/event/20216>



THE LABOR DAY REGATTA
5 - 6 September 2020
The Rudder Club of Jacksonville
8533 Malaga Avenue Jacksonville, FL 32244, USA

ONE DESIGN AND PORTSMOUTH SAILING INSTRUCTIONS

1 RULES

1.1 The regatta will be governed by the rules as defined in the current *Racing Rules of Sailing* (RRS).

1.2 US SAILING Prescriptions will apply

2 NOTICES TO COMPETITORS Official notices to competitors will be posted on the notice board located on the north exterior wall of the Rudder Club. Notices may in addition be published on the event web site at

<https://www.regattanetwork.com/event/20214>

3 CHANGES IN THE SAILING INSTRUCTIONS Any change in the Sailing Instructions will be posted on the Official Bulletin Board on the Rudder Club north wall prior 1100 5 September and may in addition be published on the Event Web Site at

<https://www.regattanetwork.com/event/42214> Any change to the schedule of races will be posted by 2000 on the day before it will take effect. Oral changes may be made on the water and will be communicated to each boat prior to her warning signal.

4 SIGNALS MADE ASHORE

4.1 Signals made ashore will be displayed from the flag pole located on the north side of the Rudder Club.

4.2 When AP is displayed ashore "1 minute" is replaced with "not less than 45 minutes" in the race signal AP.

5 SCHEDULE OF RACES

5.1 Five races are scheduled.

5.2 Class divisions shall be posted on the Official Bulletin Board.

5.3 Schedule: SATURDAY, 5 September - One design and Portsmouth classes -Three races.

1000 – 1130: Late registration 1140:

Competitors' meeting

1255: Warning signal for first class SUNDAY 6 September - One design and Portsmouth classes -. Two races

Warning signal for first class 0955.

There will be no Competitor's Meeting on Sunday.

6 CLASS FLAGS Class flags will be the International Numeral Pennants as depicted under Race Signals in the RRS.

7 RACING AREA The racing area will be on the St. Johns River between the Buckman Bridge to the south and the Fuller Warren Bridge to the north as depicted on NOAA Chart 11492.

Class		Pennant
Portsmouth Multihull	P1	
Hobie 16	P2	
Hobie 18	P3	
Flying Scot	P4	
Laser	P5	
Thistle	P6	
Pico	P8	
Portsmouth Monohull	P9	
Spare	P0	

8 THE COURSE

8.1 Courses will be as depicted in Attachment A and indicate the approximate angles between legs, the order of rounding, and the side on which each mark is to be left.

8.2 The course for each class will be displayed on a

white board located on the starting line side of the committee boat. The designation shall consist of two letters designating the course. The letter designations and the mark sequences are as set forth in Attachment A.

8.3 If the Race Committee sets a gate instead of the Leeward Mark, boats shall sail between marks forming the gate from the direction of the last mark and round either the port mark leaving it to port or the starboard mark leaving it to starboard.

8.4 If the Race Committee sets an offset mark in the vicinity of the windward mark, boats shall sail around both marks leaving them on the prescribed side.

9 MARKS 1, 2S, and 2P will be yellow cylinders. Mark 1L will be an orange cylinder. Mark 1L off-set will be a yellow tetrahedron. A new mark laid in accordance with Change of Course procedures will be an orange cylinder. The start mark will be small orange sphere and the finish mark will be a small white sphere.

10 START

- 10.1 The Starting Line will be a line between an orange flag flown on the Race Committee/Signal Boat and an orange inflated sphere set toward the left side of the course from the Committee Boat relative to the first leg of the course.
- 10.2 Boats whose warning signal has not been made shall avoid the starting area during the starting sequence of other classes.

11 CHANGE OF COURSE AFTER THE START To change the position of the next mark, the race committee will move the original mark (or the finishing line) to a new position. The change will be signaled before the leading boat has begun that leg, although the mark may not yet be in the new position. Any mark to be rounded after rounding the moved mark may be relocated without further signaling to maintain the course configuration.

12 THE FINISH The Finish Line will be between an orange flag flown on the Race Committee/Signal Boat and a white sphere set toward the left side of the course from the Committee Boat relative to the final leg of the course, (Opposite side of the committee boat from the starting line.) This is to accommodate conducting starts for some classes while others are finishing.

13 TIME LIMIT The time limit for the first boat in each starting class to finish is 90 minutes from her start.

14 PROTESTS AND REQUESTS FOR REDRESS

14.1 Protests shall be written on forms available at the Rudder Club. They shall be filed with the Regatta Chairman. Protest time will end 90 minutes after the last boat has finished the last race of the day. Protests will be heard in the approximate order received.

14.2 Protest notices will be posted on the Official Bulletin Board within 30 minutes following the protest time limit.

14.3 RRS Appendix T, Arbitration, is in effect.

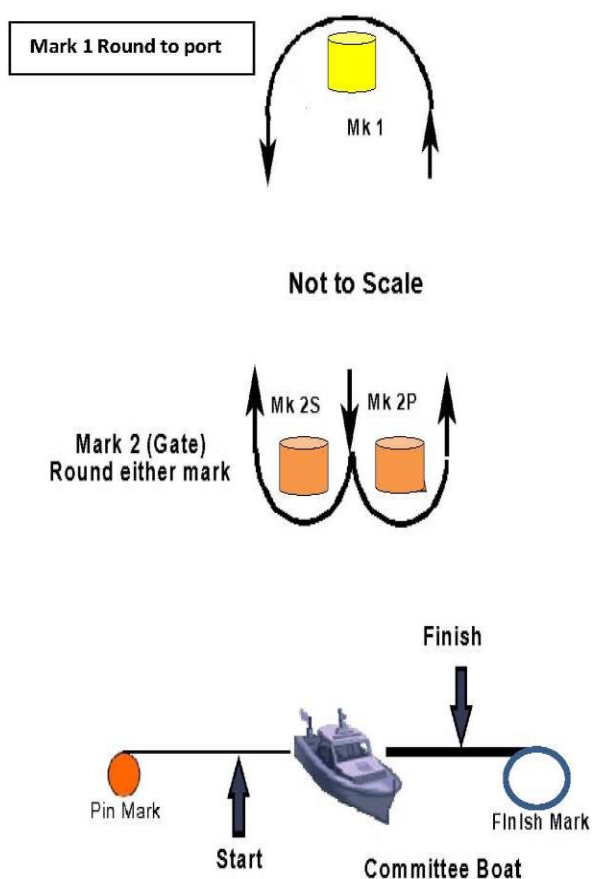
15 SCORING The Low Point Scoring System of appendix A will apply. Portsmouth classes will be scored in accordance with the Portsmouth Yardstick System. One race must be completed to constitute a series. A boat's series score will be the total of her race scores. When six or more races have been completed, a boat's series score will be the total of her race scores excluding her worst score.

16 SAFETY

- 16.1 Boats shall attempt to check in with the Race Committee by sailing past the committee boat on the non-course side prior to their class Warning Signal.
- 16.2 Boats withdrawing from a race prior to finishing shall make every effort to ensure that Race Committee is notified that they have dropped out
- 16.3 All competitors are required to conform to the U.S. Coast Guard regulations and the RRS concerning personal floatation devices and other required equipment.
- 16.4 Boats shall not impede the passage of a vessel which can safely navigate only within a narrow channel, and give way to commercial fishing vessels while fishing or vessels with restricted ability to maneuver.
- 16.5 In accordance with Rule 42.3(i), providing no significant advantage is gained, a boat may employ propulsion using an engine or another method to remain clear of a non-racing vessel when required by Inland Rules.

17 PRIZES First, second, and third place prizes will be awarded in classes of more than five finishing yachts. First and second place prizes will be awarded in classes of four to five finishing yachts. A first-place prize will be awarded in classes of three or less finishing yachts. One design prize will be awarded on Sunday 6 September.

Round –the-Buoy Courses (Attachment A)

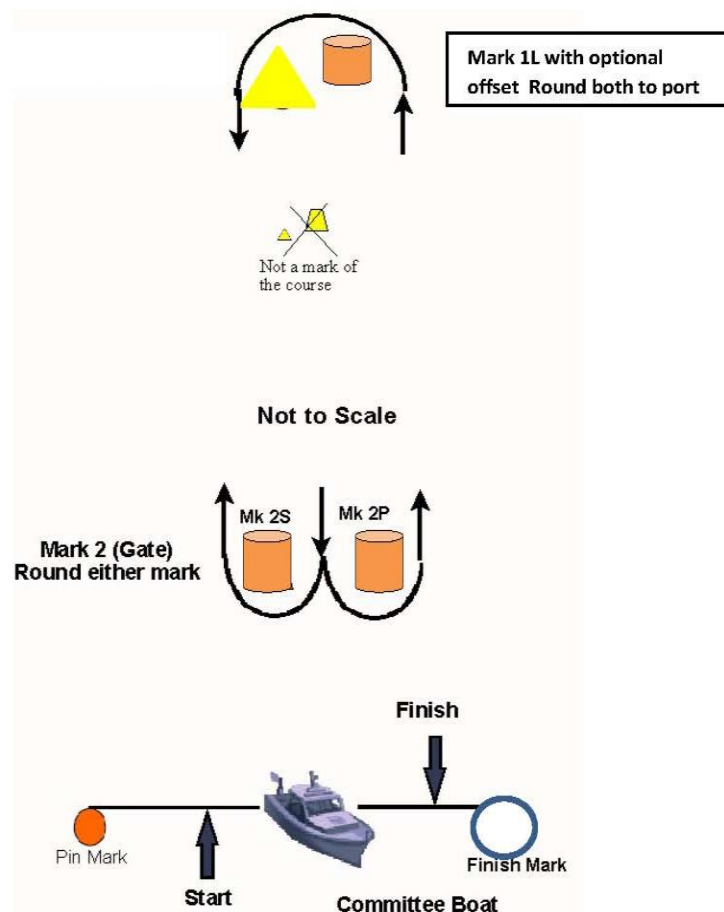


Windward Leeward Short

WS

Course: Start, 1, 2P or Course Start, 1L, 2P or 2S, 2S, 1, Finish 1L, Finish

NOTE: Offset marks and gates are optional.

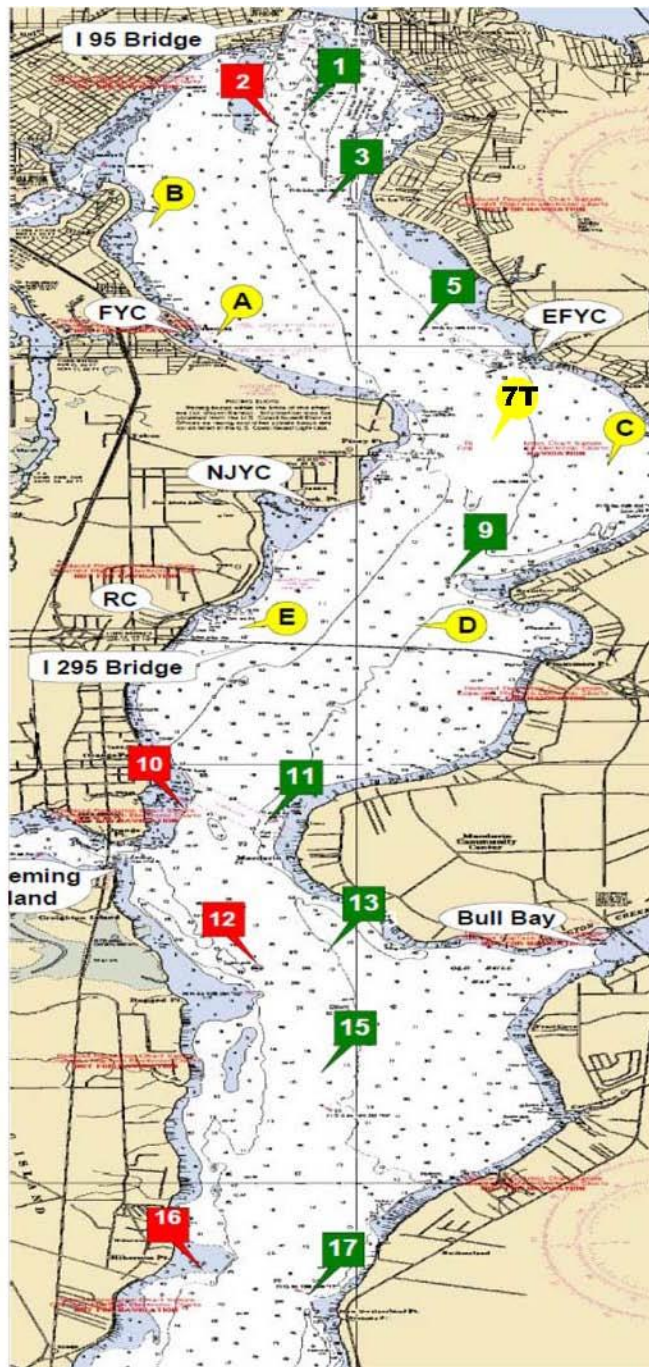


Windward Leeward Long

WL

Attachment A

Distance	nm
1 to 3	1.039
1 to 5	2.787
1 to 7T	4.643
1 to A	2.793
1 to B	1.570
3 to 5	1.773
3 to 7T	3.615
3 to 9	4.638
3 to A	1.829
3 to B	1.126
3 to C	3.763
5 to 7T	1.863
5 to 9	2.926
5 to A	1.468
5 to B	2.299
5 to C	2.029
5 to D	3.486
7 to 9	1.095
7 to C	0.977
7 to D	1.697
7 to E	2.240
9 to C	1.726
9 to D	0.618
9 to E	1.486
A to B	1.523
A to C	3.140
B to C	4.303
C to D	2.328
C to E	3.111
D to E	1.127
11 to 13	2.317
11 to 15	3.400
11 to 17	5.631
11 to 17A	6.836
13 to 15	1.109
13 to 17	3.360
13 to 17A	4.575
13 to 18	5.585
15 to 17	2.252
15 to 17A	3.467
15 to 18	4.476
17 to 17A	1.216
17 to 18	2.225
17A to 18	1.010
18 to 20	2.038



Green 1
N 30° 17.813
W 81° 40.411

Red 2
N 30° 17.628
W 81° 40.635

Green 3
N 30° 16.780
W 81° 40.259

Green 5
N 30° 15.142
W 81° 39.466

See Race Mark "7T"
N 30° 13.305
W 81° 39.077

Green 9
N 30° 12.216
W 81° 39.237

Red 10
N 30° 09.513
W 81° 41.399

Green 11
N 30° 09.305
W 81° 40.794

Red 12
N 30° 07.240
W 81° 40.800

Green 13
N 30° 07.036
W 81° 40.224

Green 15
N 30° 05.926
W 81° 40.263

Red 16
N 30° 04.038
W 81° 41.254

Green 17
N 30° 03.671
W 81° 40.393

Green 17A
N 30° 02.457
W 81° 40.522

Red 18
N 30° 01.445
W 81° 40.551

Green 19
N 30° 01.335
W 81° 40.279

Red 20
N 29° 59.822
W 81° 39.126

First Coast Sailing Association Race Marks

****Note:** If set these marks will be an inflatable mark. Race Mark "A"

N 30° 15.090 W 81° 41.160

Race Mark "B"

N 30° 11.648 W 81° 39.522

Race Mark "C"

N 30° 13.564 W 81° 37.989

Race Mark "D"

N 30° 16.581 W 81° 41.539

Race Mark "E"

N30° 11.648 W 81° 40.822 Race Mark "7T" N 30° 13.305 W 81° 39.077