



Jax Navy Day Regatta
Saturday, October 12, 2019 – St. Johns River
Notice of Race

1.0 RULES:

1.1 The Regatta will be governed by *The Racing Rules of Sailing* (RSS), the rules of First Coast Sailing Association and this NOR. These rules may be altered by the Sailing Instructions.

2.0 ELIGIBILITY AND ENTRY:

2.1 The race is open to all boats with a current PHRF certificate from First Coast Sailing Association (FCSA). www.sailjax.com

2.2 Boats that do not have a current PHRF rating assigned by FCSA may obtain a provisional rating (\$35.00 first-time annual fee) that will be submitted to FCSA for review and issuance of a Rating Certificate. Boats not having a valid rating may obtain an uncontested temporary PHRF rating on a one-time basis. You must have a valid PHRF rating to be scored for year-end awards.

2.3 Participating boats shall have an identifying sail number on her mainsail and headsails with and LP not exceeding 130%.

2.4 Eligible boats may enter by completing a registration with Epping Forest Yacht and Country Club, which is the Organizing Authority.

3.0 CLASSES:

3.1 **Performance Classes:** The performance classes will consist of a Spinnaker and a Non-Spinnaker Class.

3.2 **Cruiser Class:** A Cruiser Class will be offered. Sailing a Cruiser Class boat as defined by (FCSA PHRF Rules).

3.3 All boats will be rated in accordance with their declared Spinnaker or Non-Spinnaker rating as registered for a given race. Boats may change their Spinnaker or Non-Spinnaker registration in other races. Corrected results will be calculated based on the declared rating.

3.4 Results that are submitted to FCSA to go towards year end trophies must be submitted for either Performance Class or the Cruiser Class.

4.0 SCHEDULE OF EVENTS:

4.1 For on the water registration, the registration/Committee Boat will be located at the starting line on the St. Johns River approximately ¼ mile due west of the Epping Forest Marina Entrance.

4.2 The "On the water" registration period is 10:00 AM to 11:00 AM on the day of the race.

4.3 There will be no "Skipper's Meeting". Please review all aspects of the NOR/SI with amendments.

4.4 Each class will race one race scheduled for Saturday, October 12, 2019.

4.5 Warning signal for first start at approximately 12:55 PM on the day of the race.

4.6 The first start will be approximately 1 PM.

5.7 There will be no awards presentation nor social event after the event at EFYCC due to the Marina being closed for construction.

5.8 If the Marina is back open and online, an amendment and announcement will be shared with all participants prior to and on the day of the event.

5.0 ENTRY FEE/ REGISTRATION:

5.1 Entry fee is \$30.00 for EFYCC Members and \$35.00 for Non-Members. Payment may be in the form of cash, check or through the club membership point of sale system.

5.2 Please make checks payable to Epping Forest Yacht and Country Club. If paying cash please bring the exact amount due if possible. Entry fee must be accompanied by an entry form (Standard Race Entry Form available at www.sailjax.com) during registration.

5.3 The Race Committee is requesting that **participants pre-register** for an accurate attendance by Thursday October 10, before 3 PM. If paying by check ahead of time, please include your registration form and mail to: Epping Forest Yacht and Country Club c/o Harbormaster 1830 Epping Forest Drive Jacksonville, FL 32217.

5.4 Boats may register between the hours of 11:00 AM through 11:45 AM on the day of the race on the water by submitting to the RC boat their payment and race form in a zip lock bag. Race Course and additional information will be on white boards and will need to be noted when delivering the payment and forms. This will also be the check in prior to the start of the race.

6.0 SAILING INSTRUCTIONS:

6.1 Sailing Instructions will be available to be downloaded from the First Coast Sailing Association website www.sailjax.com.

7.0 COURSE:

7.1 Course will be a single PHRF Time on Time race using government navigation marks and or inflatable markers. The course will be outlined on a white board on the starboard side of the R/C boat after the registration period closes and during "check-in" prior to the start signal sequence.

8.0 SCORING THE RACE:

8.1 Classes will be scored using the PHRF Time on Time system.

8.2 The Low Point scoring system of Appendix A will apply.

8.3 Results of this race will be forwarded to the First Coast Sailing Association for inclusion in the Annual Series scoring.

9.0 RACE PRIZES:

9.1 Prizes may be awarded post-race results if there are enough boats entering the regatta through pre-registration and on the day of the race.

10.0 INFORMATION

10.1 For additional information or questions concerning this Regatta please contact the EFYCC Harbormaster Keith Keller (904) 739-7150 or email kkeller@efyc.com.



Jessie Ball Regatta

Saturday, October 12, 2019 – St. Johns River

Sailing Instructions

1. RULES:

- 1.1 The Regatta will be governed by *The Racing Rules of Sailing* (RRS) except as modified by the rules of the First Coast Sailing Association and these Sailing Instructions
- 1.2 Racing Rules A4 and A5 are changed by SI 12.3 as follows: "A boat starting later than fifteen minutes after her starting signal will be scored "did not start" without a hearing".
- 1.3 Racing Rules A4 and A5 of the RRS are changed by SI 14.1 as follows: A boat failing to finish within 60 minutes after the first boat in her class will be scored "Did Not Finish" without a hearing.

2. ENTRIES:

- 2.1 Eligible boats are those who have officially entered by completing a registration form with EFYCC in advance or during the registration period as set forth in the Notice of Race.
- 2.2 Additional eligibility requirements and class definitions are defined in the Notice of Race Articles 2 and 3.

3. SAFETY:

- 3.1 All Competitors are required to conform to the U. S. Coast Guard regulations and the RRS concerning personal floatation devices and other required equipment.
- 3.2 Boats shall not impede the passage of a vessel that can safely navigate only within a narrow channel or commercial fishing vessels while fishing or vessels with restricted ability to maneuver. Racing boats interfering with other vessels may be subject to protest by the Race Committee or contestants and possible disqualification.
- 3.3 Race Committee will monitor VHF channel 72.
- 3.4 Boats shall attempt to check in with the Race Committee by sailing past on the non-course side prior to their class Warning Signal.
- 3.5 Boats withdrawing from a race prior to finishing shall make every effort to ensure that the Race Committee is notified that they have withdrawn.

4. NOTICE TO COMPETITORS:

4.1 Notice to competitors will be posted on white boards from the starboard side of the Race Committee boat during the on-water registration period and during check-in prior to the first warning signal before the start of the race.

5. CHANGES IN THE SAILING INSTRUCTIONS

5.1 Any change in the Sailing Instructions will be posted in accordance with SI 4.1 before 12:00p.m. on the day of the race.

5.2 Changes to the Sailing Instructions may be communicated to each boat can be written on the white board on the Race Committee boat and the boat will display the Lima flag- "come within hail" while on the water and prior to her warning signal.

6. SIGNALS:

6.1 Signals made from the R/C boat shall be a combination of visual flags and sounds from an air horn during the 5 minute sequence in accordance with US Sailing RRS.

6.2 The R/C shall use VHF channel 72 and will monitor the radio throughout the event.

7. RACE SCHEDULE:

7.1 Saturday, October 12, one race per fleet.

7.2 Schedule of Events: **Registration:** 11:00-11:45 **Warning Signal** 12:55 **Start** 1:00pm.

8. CLASSES:

8.1 **Performance Class:** Open to Spinnaker and Non-Spinnaker performance boats.

8.2 **Cruiser Class:** A Cruiser Class will be offered. Sailing a Cruiser Class boat as defined by (FCSA PHRF Rules).

8.3 All boats will be rated in accordance with their declared Spinnaker or Non-Spinnaker rating as registered for a given race. Boats may change their Spinnaker or Non-Spinnaker registration in other races. Corrected results will be calculated based on the declared rating.

8.4 Results that are submitted to FCSA to go towards year end trophies must be submitted for either Performance Class or the Cruiser Class.

8.5 Boats will be scored in the FCSA Annual Series based on the class designated on its entry form.

8.6 Class flags are listed at the bottom of the Sailing Instructions.

9. THE RACING AREA:

9.1 The racing area shall be between the Buckman Bridge to south and the Fuller Warren Bridge to the north as depicted on NOAA Chart 11492.

10. COURSES:

10.1 The official race course(s) will be displayed on white boards from the RC Boat on the starboard side of the Committee Boat ½ hour before the start of the first race.

10.2 "W" on the white board will designate the Windward Mark from the starting line.

10.3 "L" on the white board will designate the Leeward Mark from the starting line.

10.4 "O" on the white board will designate an Offset Mark- if used. The course heading in degrees will be given from the previous mark.

10.5 Subscript “p” or “s” will designate leaving that mark with the mark on the port or starboard side of the RC boat respectively.

10.6 A “1” on the white board will signify once around, a “2” will signify twice around, etc.

10.7 Government Navigation Marks will be designated by the actual Numerical Mark Number.

10.8 The Start/Finish line will be closed during the course except for the last leg of an upwind finish, unless the start pin is designated as the Leeward mark of the course.

11. MARKS:

11.1 Marks will be yellow and / or orange inflatable marks, stationary government marks or other marks as designated by the Race Committee.

11.2 One single race will be offered for each class. The course may be a combination of Navigation Marks on the river and marks set by the Race Committee.

12. START:

12.1 The Starting Line will be a line between an orange flag flown on the Race Committee Boat and an inflatable mark set toward the left side of the course from the Committee Boat.

12.2 Boats whose warning signal has not been made shall keep clear of the starting area.

12.3 A boat starting later than fifteen minutes after her starting signal will be scored “Did Not Start” without hearing. This changes Rules A4 and A5.

13. THE FINISH:

13.1 The Finish Line will be between an orange flag flown on the RC Boat and an inflatable mark set to the left side relative to the final leg of the course.

14. TIME LIMIT:

14.1 The time limit shall be 3 hours for each class. A boat failing to finish within 60 minutes after the first boat in her class will be scored “Did Not Finish” without a hearing. This changes RRS Rule 35 and Rule A4.1.

15. SCORING:

15.1 Classes will be scored using PHRF Time on Time in accordance with changes set forth by FCSA.

15.2 The Low Point scoring system of RRS Appendix A will apply.

16. PROTESTS:

16.1 Intent to protest(s) shall be hailed to the Race Committee on the Race Committee boat within 15 minutes after finishing their race. A protest flag shall be visible near the stern of the protesting boat when hailing the committee boat.

16.2 A filled out formal protest form shall be turned in to the Race Committee boat within 60 after minutes after the end of the race and returning to the Epping Forest docks, signaled by a horn. Protests will be heard in the approximate order received.

16.3 A formal protest hearing may be held on the water before the Race Committee boat heads to be hauled out.

16.4 Protest hearing results will be made available by contacting the Race Chairman Keith Keller as soon as possible via email at kkeller@efyc.com.

17. RESULTS:

17.1 Race results will also be posted as soon as possible on the FCSA website www.sailjax.com as soon as the scoring and reporting process is complete.

18 RACE PRIZES:

18.1 Prizes/trophies will be awarded at the discretion of the Race Committee depending on participation in each class of five or more vessels participating.

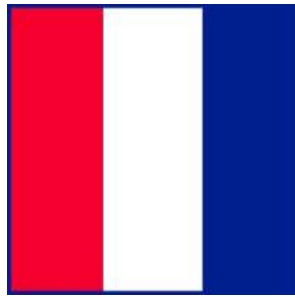
18.2 There will be no post-race activities following the race unless otherwise stated. An announcement and will be made to the fleet if the Marina is able to re-open by the time of this event ending.

18.3 If participation levels are adequate, arrangements to pick up prize/trophy can be made by directly contacting Keith Keller via email kkeller@efyc.com.

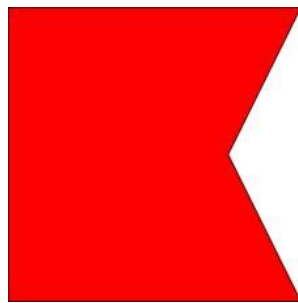
FURTHER INFO: Keith Keller, Harbor Master (904) 739 - 7150



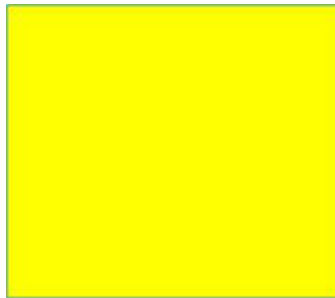
Class Signal Flags Description:



Spinnaker Class "T"



Non-Spinnaker Class "B"



Cruiser Class "Q"

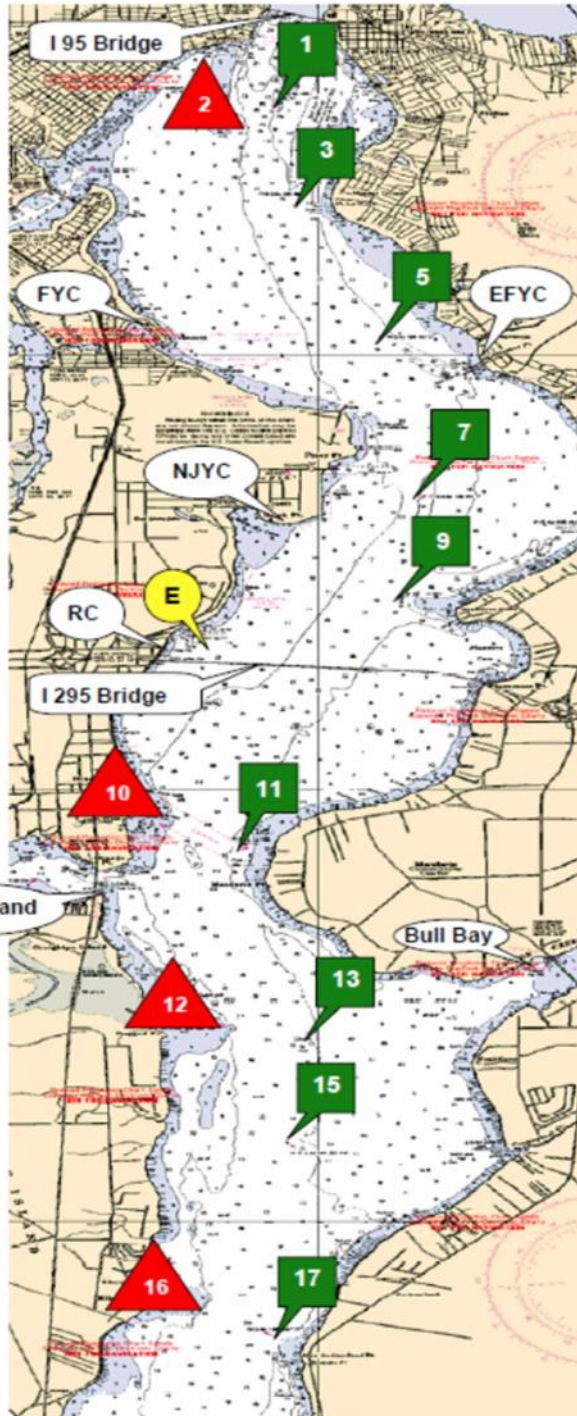


- 1 to 3 1.104 nm
- 1 to 5 2.787 nm
- 1 to 7 4.643 nm
- 3 to 5 1.703 nm
- 3 to 7 3.546 nm
- 5 to 7 1.863 nm
- 5 to 9 2.926 nm
- 7 to 9 1.095 nm
- 7 to E 2.240 nm
- 9 to E 1.486 nm

- 11 to 13 2.317 nm
- 11 to 15 3.400 nm
- 11 to 17 5.631 nm
- 13 to 15 1.109 nm
- 13 to 17 3.360 nm
- 15 to 17 2.252 nm



* Marks 2, 10, 12, 16 are well placed. Do not sail out of the channel without local knowledge.



From 2009
USCG Light List

River Mark G1
N 30° 17.813
W 81° 40.411

River Mark R2
N 30° 17.628
W 81° 40.635

River Mark G3
N 30° 16.719
W 81° 40.218

River Mark G5
N 30° 15.142
W 81° 39.466

River Mark G7
N 30° 13.305
W 81° 39.077

River Mark G9
N 30° 12.216
W 81° 39.237

Race Mark "E"
N 30° 11.648
W 81° 40.822

River Mark R10
N 30° 09.513
W 81° 41.399

River Mark G11
N 30° 09.305
W 81° 40.794

River Mark R12
N 30° 07.240
W 81° 40.800

River Mark G13
N 30° 07.036
W 81° 40.224

River Mark G15
N 30° 05.926
W 81° 40.283

River Mark R16
N 30° 04.038
W 81° 41.254

River Mark G17
N 30° 03.671
W 81° 40.393