



# THE WOMEN ON WATER REGATTA

## Saturday, November 3, 2018

The Rudder Club of Jacksonville, Inc.  
8533 Malaga Avenue, Jacksonville, FL 32244 (904) 264-4094

### NOTICE OF RACE

#### **1.0 RULES**

The Regatta will be governed by *The Racing Rules of Sailing* (RSS) and the rules of First Coast Sailing Association (FCSA). These may be altered by the Sailing Instructions.

#### **2.0 ELIGIBILITY AND ENTRY**

- 2.1 All female crews are encouraged to register. Competitor's requirements for mixed crew eligibility sailings are: at least 50% of those aboard shall be female and the boat must be helmed by a female from the preparatory signal until finish.
- 2.2 All boats must have a valid PHRF rating from FCSA. Boats not having a valid rating may obtain an uncontested temporary PHRF rating on a one-time basis, assigned by the Rudder Club in accordance with FCSA Rules.
- 2.3 Participating boats shall have their sail number on the mainsail and headsails with an LP exceeding 130%.
- 2.4 Eligible boats may enter by completing registration with the Rudder Club, which is the organizing authority.

#### **3.0 CLASSES**

- 3.1 Spinnaker and Non-Spinnaker Performance Classes with all-female crew (100% female crew).
- 3.2 Cruiser Class (as defined by FCSA Rules) sailing with all-female crew or mixed crew (at least 50% female crew).

#### **4.0 SCHEDULE OF EVENTS**

- 4.1 Friday, November 2: Complimentary docking at Rudder Club the night prior to the race.
- 4.2 **Saturday, November 3: 10:00-11:45 a.m. Registration; 12:00 Competitors Meeting; 12:55 p.m. Warning Signal**

#### **5.0 ENTRY FEE/REGISTRATION**

- 5.1 Entry fee is \$25. Mail checks payable to The Rudder Club and accompanied by an entry form (Standard Race Entry Form available at <http://www.sailjax.com>.) Boats may also register between the hours of 10:00 thru 11:45 a.m. on the day of the race.

#### **6.0 SAILING INSTRUCTIONS**

- 6.1 Sailing Instructions will be available to be downloaded from the First Coast Sailing Association website [www.sailjax.com](http://www.sailjax.com). Copies will also be available at the Rudder Club on the day of the race.

#### **7.0 COURSE**

- 7.1 Course will be a single PHRF, Time on Distance race using government navigation marks and inflatable markers.

#### **8.0 SCORING THE RACE**

- 8.1 Classes will be scored using PHRF Time on Distance.
- 8.2 The Low Point scoring system of Appendix A will apply.
- 8.3 Each boat starting and finishing the race, and not thereafter retiring or being disqualified, will be scored points equal to her corrected finishing place in class.
- 8.4 Results of this race will be forwarded to the First Coast Sailing Association for inclusion in the computation for Series scoring.

#### **9.0 RACE PRIZES**

- 9.1 First, second and third place prizes will be awarded in classes with five or more boats. Fewer prizes may be awarded in classes with fewer than five boats.

#### **10.0 INFORMATION**

Contact: The Rudder Club  
8533 Malaga Avenue  
Jacksonville, FL 32244  
904-264-4094  
<http://www.rudderclub.com>



# THE WOMEN ON WATER REGATTA

Saturday, November 3, 2018

The Rudder Club of Jacksonville, Inc.

8533 Malaga Avenue, Jacksonville, FL 32244 (904) 264-4094

## SAILING INSTRUCTIONS

### 1. RULES

1.1 The regatta will be governed by *The Racing Rules of Sailing* (RRS) except as modified by the rules of the First Coast Sailing Association (FCSA) and Notice of Race Articles 2 and 3.

1.2 Racing Rules 35, A4, and A5 of the RRS are changed by SI 14.1 as follows: "A boat failing to finish within 60 minutes in corrected time after the first boat in her class will be scored 'Did Not Finish' without a hearing".

### 2. ENTRIES

2.1 Eligible boats are those who have officially entered by completing a registration form with the Rudder Club in advance or during the registration period as set forth in the Notice of Race.

2.2 Additional eligibility requirements and class definitions are defined in the Notice of Race Articles 2 and 3.

### 3. SAFETY

3.1 All competitors are required to conform to the U.S. Coast Guard regulations and the RRS concerning personal floatation devices and other required equipment.

3.2 Boats shall not impede the passage of a vessel that can safely navigate only within a narrow channel or commercial fishing vessels while fishing or vessels with restricted ability to maneuver. Racing boats interfering with other vessels may be subject to protest by the Race Committee or contestants and possible disqualification.

3.3 Race Committee will monitor VHF Channel 78.

3.4 Boats shall attempt to check in with the Race Committee by sailing past on the non-course side prior to their class Warning Signal.

3.5 Boats withdrawing from a race prior to finishing shall make every effort to ensure that Race Committee is notified that they have withdrawn.

### 4. NOTICES TO COMPETITORS

4.1 Notices to competitors will be posted on the official notice board located on the north wall of The Rudder Club.

### 5. CHANGES IN THE SAILING INSTRUCTIONS

5.1 Any change in the Sailing Instructions will be posted in accordance with SI 4.1 before 12:00 on the day of the race.

5.2 Oral changes to the Sailing Instructions may be communicated to each boat while on the water and prior to her warning signal.

### 6. SIGNALS MADE ASHORE

6.1 Signals made ashore will be displayed on the porch of the Rudder Club.

6.2 Code Flag "AP", Answering Pennant, displayed ashore with two sound signals (one when lowered) means "The race is postponed: do not leave the dock." The warning signal will be made not less than 45 minutes after AP is lowered.

### 7. RACE SCHEDULE

7.1 Saturday, November 3, one race

7.2 Schedule of Events:



Registration: 10:00-11:45 am

Competitors' Meeting: 12:00 noon

Warning Signal: 12:55 pm

## 8. CLASS FLAGS

8.1 Class flags will be the International Numeral Pennants as depicted in the RRS.

Class	Pennant	
All Female Spinnaker & Non-Spinnaker	P1	
Cruiser Class	P2	

## 9. RACING AREA

9.1 The racing area will be in the St. Johns River between the Buckman Bridge to the south and the Fuller Warren Bridge to the north as depicted on NOAA Chart 11492.

## 10. THE COURSE

10.1 Race course will be displayed from a course board on the Race Committee boat.

10.2 A single race using river navigation marks will be displayed using the designation of the River Marks as depicted in Attachment A, and the letter designation for Mark "W" and Mark "E" as described in SI 11.1 and 11.2.

## 11. MARKS

11.1 Marks may be government navigation marks as depicted on NOAA Chart 11492 (as corrected by Notices to Mariners), yellow inflatable Mark "E" as shown in Attachment A or orange inflatable Mark "W" described in SI 11.2. Government marks will be designated by their number as appearing on the chart. Marks "E" and "W" will be designated by their alphabetic designator. Approximate positions for the government navigation marks and Mark "E" are shown in Attachment A.

11.2 An orange inflatable mark set to windward of the starting line as a windward mark will be designated "W", WHISKEY.

11.3 A limiting mark may be set to protect the committee boat close to her and on the same end of the starting line. No boat shall pass between the limiting mark and the committee boat. (This limiting mark is not a mark of the

course.)

## 12. START

12.1 The Starting Line will be a line between an orange flag flown on the Race Committee Boat and a red inflated sphere set toward the left side of the course from the Committee Boat.

12.2 Boats whose warning signal has not been made shall keep clear of the starting area.

## 13. THE FINISH

13.1 The Finish Line will be between an orange flag flown on the Race Committee Boat and a white inflated sphere set to the left side relative to the final leg of the course.

## 14. TIME LIMIT

14.1 The time limit shall be 3 hours for each class. Boats failing to finish within 60 minutes corrected time after the first boat of their class finishes will be scored "Did Not Finish" (DNF). This changes RRS Rule 35 and Rule A4.1.

## 15. PROTESTS

15.1 Protests shall be written on forms available at The Rudder Club. They shall be filed with the Regatta Chairman. Protest time will end one hour after the Race Committee boat docks, signaled by a horn. Protests will be heard in the approximate order received.

15.2 Protest notices will be posted on the Official Bulletin Board within 20 minutes following the protest time limit.

## 16. SCORING

16.1 Classes will be scored using PHRF Time on Distance.

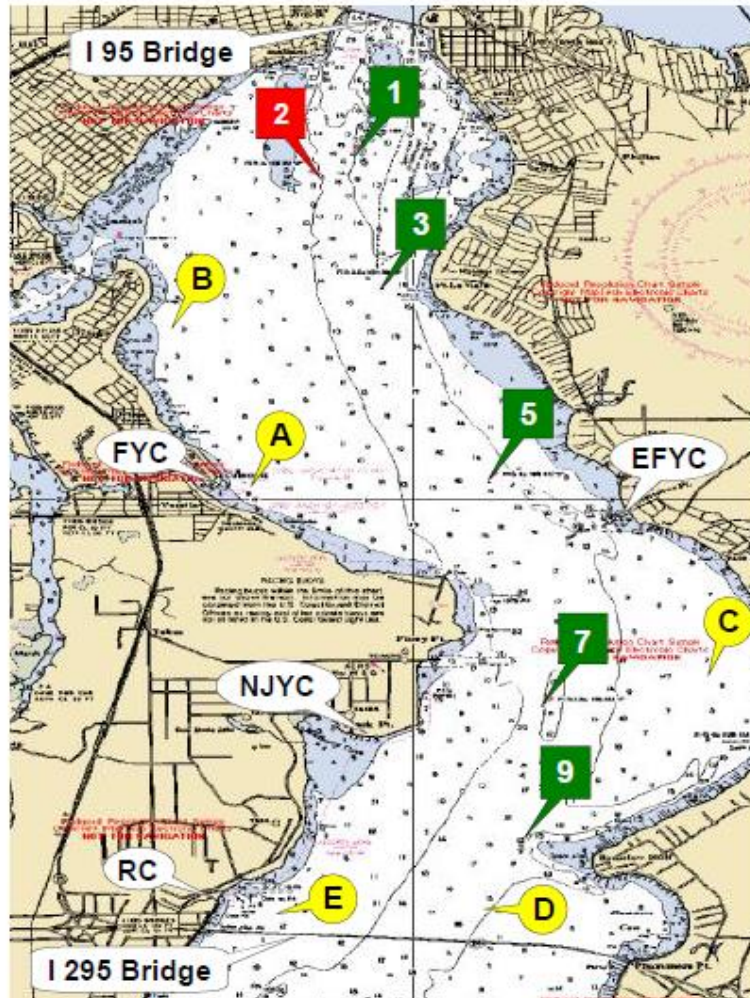
16.2 The Low Point scoring system of Appendix A will apply.

## 17. PRIZES

17.1 Results will be announced at The Rudder Club following the race. First, second, and third place prizes will be awarded for classes of five or more.

# ATTACHMENT A

Distance	nm
1 to 3	1.039
1 to 5	2.787
1 to 7	4.643
1 to A	2.793
1 to B	1.570
3 to 5	1.773
3 to 7	3.615
3 to 9	4.638
3 to A	1.829
3 to B	1.126
3 to C	3.763
5 to 7	1.863
5 to 9	2.926
5 to A	1.468
5 to B	2.299
5 to C	2.029
5 to D	3.486
7 to 9	1.095
7 to C	0.977
7 to D	1.697
7 to E	2.240



From 2011  
USCG Light List

**Green 1**  
N 30° 17.813  
W 81° 40.411

**Red 2**  
N 30° 17.628  
W 81° 40.635

**Green 3**  
N 30° 16.780  
W 81° 40.259

**Green 5**  
N 30° 15.142  
W 81° 39.466

**Green 7**  
N 30° 13.305  
W 81° 39.077

**Green 9**  
N 30° 12.216  
W 81° 39.237

**Red 10**  
N 30° 09.513  
W 81° 41.399

**Green 11**  
N 30° 09.305  
W 81° 40.794

Also From 2011  
USCG Light List

**Race Can "C"**  
N 30° 13.564  
W 81° 37.989

**Race Can "A"**  
N 30° 15.090  
W 81° 41.160

**Race Can "D"**  
N 30° 11.648  
W 81° 39.522

**Race Can "B"**  
N 30° 16.581  
W 81° 41.539

**Race Can "E"**  
N 30° 11.648  
W 81° 40.822