

Fastest in the Forest Regatta Sunday, October 1, 2017 – EFYCC Marina

Epping Forest Yacht and Country Club
1830 Epping Forest Drive Jacksonville, Fl. 32217

Notice of Race

1.0 RULES

The Regatta will be governed by The Racing Rules of Sailing (RSS), the rules of First Coast Sailing Association and this NOR. These rules may be altered by the Sailing Instructions.

2.0 ELIGIBILITY

- 2.1 The race is open to all boats with a current PHRF certificate from First Coast Sailing Association (FCSA). www.sailjax.com
- 2.2 Boats that do not have a current PHRF rating assigned by FCSA may obtain a provisional rating (\$35.00 first-time annual fee) that will be submitted to FCSA for review and issuance of a Rating Certificate.
- 2.3 A boat participating in the regatta shall have an identifying sail number on her mainsail.
- 2.4 Eligible boats may enter by completing a registration with Epping Forest Yacht and Country Club, which is the Organizing Authority.
- 2.5 Boats shall register in one of the following three classes: Spinnaker, Non-Spinnaker or Cruiser Class. Boats will be scored based on the class designated on its entry form and the adjusted time based on their rating

3.0 CLASS of Vessel

3.1 Non-Spinnaker Class: The Fleet will be racing against each other in the designated Non-Spinnaker Class. Refer to PHRF Rules of FCSA definitions and rules to the Non-Spinnaker Class.

4.0 SCHEDULE OF EVENTS

- 4.1 Saturday, September 30: Complimentary docking at EFYCC the evening before the race.
- 4.2 Sunday, October 1: 9:00a.m. to 11:45a.m Registration in the Marina; 10:00a.m.-11:55a.m. Traditional Brunch with the Fleet in the **Mansion; 12:00p.m. Competitors Meeting; 12:55p.m. Warning Signal; 1:00p.m. Race Start.**

5.0 ENTRY FEE/ REGISTRATION

5.1 There is no entry fee to attend this Regatta for the EFYCC Membership. However, in order to process and score the attending vessels, an entry form is required (Standard Race Entry Form available at www.sailjax.com) during registration. Vessels may pre-register or fill out the forms to register between the hours of 9:00a.m. through 11:45a.m. on the day of the race in the Marina.

6.0 SAILING INSTRUCTIONS

6.1 Sailing Instructions will be available to be downloaded from the First Coast Sailing Association website www.sailjax.com. Copies will also be available at the registration table on the day of the race.

7.0 COURSE

7.1 Course will be a single PHRF Time on Distance race using government navigation marks and or inflatable markers.

8.0 SCORING THE RACE

- 8.1 Vessels will be scored using the PHRF Time on Distance system.
- 8.2 The Low Point scoring system of Appendix A will apply.
- 8.3 Results of this race will be announced post-race on the Mariner's Deck gathering and after party.

9.0 RACE PRIZES

9.1 First, Second and Third place prizes will be awarded and First Place overall will have the Name of the Skipper and Vessel placed on the Fastest in the Forest Trophy, which is in the display case in the Mansion..

10.0 INFORMATION

10.1 For additional information or questions concerning this Regatta please contact the EFYCC Harbormaster Keith Keller (904) 739-7150 or email kkeller@efyc.com.



EPPING-FOREST
YACHT & COUNTRY CLUB

2017 Fastest in the Forest

Amendment

Hello EFYCC Sailors,

I would like to share several changes to allow for the fleet to be able to sail their unique vessel but still be able to be competitive and go for the trophy. Please see the changes listed below and we will also discuss further during the Skipper's Meeting at 1200 on Sunday October 1st.

1. This will be a PHRF rating race with the overall best corrected time, to be the determined winner.
2. There will be ONE CLASS and ONE COURSE.
3. You will have the option to **fly a spinnaker** and **use that designated rating** or if you choose **not to fly a spinnaker** you **will use that designated rating**. Please have the correct rating with you at the time of registration.
4. There will be **ONE start** and **ONE finish**.
5. **The RC will make adjustments if necessary during the regatta based on wind conditions and length of course.**

We will still use the designated flag from earlier emails and now will be described as "One Class".

We look forward to seeing everyone this weekend!

Best wishes,

Keith and Crew

Fastest in the Forest Regatta Sunday, October 1, 2017 – EFYCC Marina

Epping Forest Yacht and Country Club
1830 Epping Forest Drive Jacksonville, Fl. 32217

Sailing Instructions

1. RULES

- 1.1 The Regatta will be governed by The Racing Rules of Sailing (RRS) except as modified by the rules of the First Coast Sailing Association and these Sailing Instructions
- 1.2 Racing Rules A4 and A5 are changed by SI 12.3 as follows: A vessel starting later than ten minutes after her starting signal will be scored "did not start" (DNS) without a hearing. This changes Rules A4 and A5.
- 1.3 Racing Rules A4 and A5 of the RRS are changed by SI 14.1 as follows: A vessel failing to finish within 60 minutes in corrected time after first boat in her class will be scored "Did Not Finish" (DNF) without a hearing.

2. ENTRIES

- 2.1 Eligible boats are those who have officially entered by completing a registration form with EFYCC in advance or during the registration period as set forth in the Notice of Race.
- 2.2 Additional eligibility requirements and class definitions are defined in the Notice of Race Articles 2 and 3.

3. SAFETY

- 3.1 All Competitors are required to conform to the U. S. Coast Guard regulations and the RRS concerning personal floatation devices and other required equipment.
- 3.2 Boats shall not impede the passage of a vessel that can safely navigate only within a narrow channel or commercial fishing vessels while fishing or vessels with restricted ability to maneuver. Racing boats interfering with other vessels may be subject to protest by the Race Committee or contestants and possible disqualification.
- 3.3 Race Committee will monitor VHF channel 72.
- 3.4 Boats shall attempt to check in with the Race Committee by sailing past on the non-course side prior to their class Warning Signal.
- 3.5 Boats withdrawing from a race prior to finishing shall make every effort to ensure that the Race Committee is notified that they have withdrawn.

4. NOTICE TO COMPETITORS

- 4.1 Notice to competitors may be posted on the official notice location on the Mariner's Deck window at EFYCC Marina or handed out during registration as a packet.

5. CHANGES IN THE SAILING INSTRUCTIONS

- 5.1 Changes to the Sailing Instructions will be posted and announced in accordance with SI 4.1 before 12:00p.m. on race day.
- 5.2 Oral changes to the Sailing Instructions may be communicated to each boat while on the water and prior to her warning signal.

6. SIGNALS MADE ASHORE

- 6.1 Signals made ashore will be displayed on the club flag staff, next to the Harbormasters office.
- 6.2 Code Flag "AP", Answering Pennant, with two sounds means "The race is postponed. It is advised not to leave the Harbor area." The time of the warning signal will be posted on the Notice Window before the lowering of the "AP" flag with one sound.

7. RACE SCHEDULE

- 7.1 Sunday, October 1, 2017 one race.
- 7.2 Schedule of Events:

Registration:	09:00-11:45 am Pre-registration and during the hours previously listed in the Marina
Competitor's Meeting:	12:00 noon will be held in the Mansion right after the group finishes with Brunch
Warning Signal:	12:55

8. CLASS

- 8.1 Non-Spinnaker Class: The Fleet will be racing against each other in the designated Non-Spinnaker Class. Refer to PHRF Rules of FCSA definitions and rules to the Non-Spinnaker Class.
- 8.2 Class flags are listed on page 2 of the Sailing Instructions.

9. THE RACING AREA

9.1 The racing area shall be between the Buckman Bridge to south and the Fuller Warren Bridge to the north as depicted on NOA Chart 11492.

10. COURSES

10.1 The official race course will be announced at the Skippers Meeting at 12:00 noon the day of the race.

10.2 Course(s) will be as announced and posted alongside the Notice of Race on the outside downstairs window of the Captains Deck at the competitors meeting.

11. MARKS

11.1 Marks will be yellow and / or orange inflatable marks, stationary government marks or other marks as designated by the Race Committee.

11.2 One single race will be offered for one class. The course may be a combination of Navigation Marks on the river and marks set by the Race Committee.

12. START

12.1 The Starting Line will be a line between an orange flag flown on the Race Committee Boat and an inflatable mark set toward the left side of the course from the Committee Boat.

12.2 Boats whose warning signal has not been made shall keep clear of the starting area.

13. THE FINISH

13.1 The Finish Line will be between an orange flag flown on the RC Boat and an inflatable mark set to the left side relative to the final leg of the course.

13.2 The finish line will be described and detailed before the race at the RC and Skipper's meeting at 1200 hours.

14. TIME LIMIT

14.1 The time limit shall be 3 hours for the class.

15. PROTESTS

15.1 Protests shall be filed with RC. Protest time will end one hour after RC Boat docks after the racing.

15.2 Protest notices will be posted on the official notice location on the Mariner's Deck window at EFYCC Marina.

16. SCORING

16.1 Classes will be scored using PHRF Time on Distance.

16.2 The Low Point scoring system of RRS Appendix A will apply.

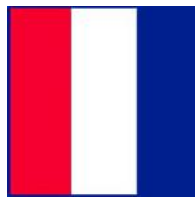
17. RESULTS

17.1 Results will be announced at Epping Forest Marina following the race. The results will also be posted on the FCSA website www.sailjax.com

FURTHER INFO: Keith Keller, Harbor Master (904) 739 - 7150

The Mariner's Deck Bar upstairs will be open after the race offering cocktails and may be placed on your member charge. The EFYCC Marina will be offering complimentary beer and wine, as well as hot hors d'oeuvres during the awards ceremony and finishing times for all attendees. Please come out and support the continuation of Sailing in the Northeast Florida region. Good Luck!

Class Signal Flags Description:



Non-Spinnaker Class " T "

Chart of local waters

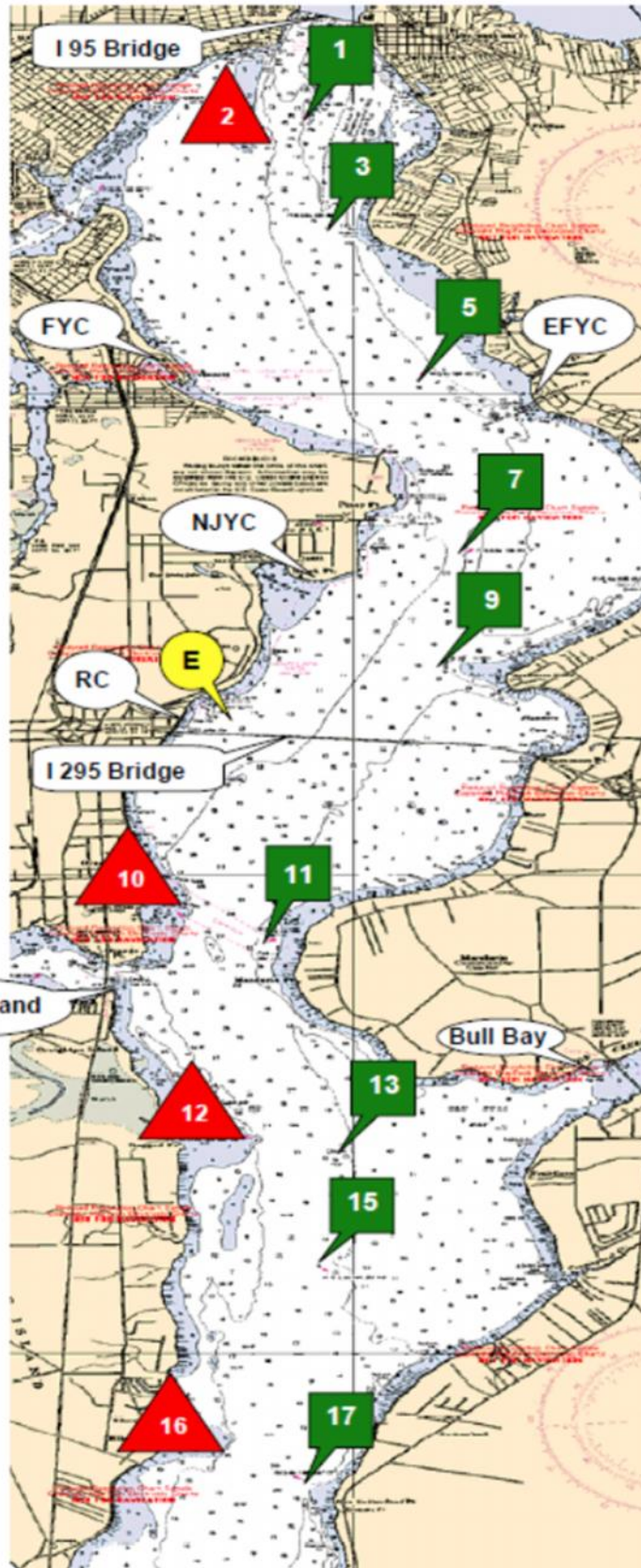


- 1 to 3 1.104 nm
- 1 to 5 2.787 nm
- 1 to 7 4.643 nm
- 3 to 5 1.703 nm
- 3 to 7 3.546 nm
- 5 to 7 1.863 nm
- 5 to 9 2.926 nm
- 7 to 9 1.095 nm
- 7 to E 2.240 nm
- 9 to E 1.486 nm

- 11 to 13 2.317 nm
- 11 to 15 3.400 nm
- 11 to 17 5.631 nm
- 13 to 15 1.109 nm
- 13 to 17 3.360 nm
- 15 to 17 2.252 nm



* Marks 2, 10, 12, 16 are well placed. Do not sail out of the channel without local knowledge.



From 2009
USCG Light List

River Mark G1
N 30° 17.813
W 81° 40.411

River Mark R2
N 30° 17.628
W 81° 40.635

River Mark G3
N 30° 16.719
W 81° 40.218

River Mark G5
N 30° 15.142
W 81° 39.466

River Mark G7
N 30° 13.305
W 81° 39.077

River Mark G9
N 30° 12.216
W 81° 39.237

Race Mark "E"
N 30° 11.648
W 81° 40.822

River Mark R10
N 30° 09.513
W 81° 41.399

River Mark G11
N 30° 09.305
W 81° 40.794

River Mark R12
N 30° 07.240
W 81° 40.800

River Mark G13
N 30° 07.036
W 81° 40.224

River Mark G15
N 30° 05.926
W 81° 40.283

River Mark R16
N 30° 04.038
W 81° 41.254

River Mark G17
N 30° 03.671
W 81° 40.393

History of the Regatta

The Member's Regatta (AKA "Fastest in the Forest") is open only to members of Epping Forest Yacht Club. The first Fastest in the Forest regatta was held on October 21, 1989 and the following year saw the most registered boats for the regatta; 13. 1990 was also the latest calendar date the race was held; Dec. 15th. The race was not sailed in 2004, 2005, or 2009

In 1997 the regatta resumed and in 1997 the following note was included in the invitations: "Awards will follow...with cigars and Brandy in the mansion". This was later changed to "Port and Cigars" and finally disappeared from race promotions in 2006.

The name of the regatta was changed to "Sailors in the Forest" in 2007 with an emphasis on "No experience necessary", negotiated handicaps, and with non-sailing members assigned as crew on racing yachts. Sailors in the Forest continued in 2008 with the introduction of motors. Two minutes was added to a boat's time for every one minute her motor was used. It should be noted the winning vessel did NOT use her motor.

The name of the regatta was again changed in 2009 to "Boaters in the Forest" featuring a nautical scavenger hunt involving a series of obscure questions reminiscent of the Monty Python scene with the gatekeeper at the river bridge.

In 2010, the regatta came full circle once again becoming a sailboat race. This year also saw the addition a one-design series with the Jacksonville University sailing team and EFYC Youth program joining the regatta.

In 2011, the regatta reclaimed its original name "Fastest in the Forest" and saw the addition of an Optimist Green Fleet regatta in the morning. The Optimist regatta was later renamed the Popsicle Regatta and finally moved to a different date.

During the year of 2014, EFYCC saw some changes and management throughout the Club including the Marina. Keith Keller became the Harbormaster and Jonah Vroegindewey was his qualified U.S Sailing Instructor. There were a lot of changes that were implemented and the Sailing program received a fresh start. The Fastest in the Forest that year was held in September as it had been in the past. In 2015, the traditional Regatta was moved to the first week in October to adjust for the passing of John Meehan from the Saint Augustine Yacht Club. His memorial race is held in Saint Augustine now on the last Sunday in September. Moving forward, the EFYCC Sailing team for youth levels is still growing. In the Fall of 2015 plans were made to start a UNF program to Sail and train out of the EFYCC basin. Spring of 2016 saw the start of UNF practicing and coaching in hopes of establishing a collegiate level structure to be based out of the EFYCC Marina. Fall of 2016 has welcomed UNF back in full swing, with a schedule of attending Regattas in the South East. UNF hopes to earn their designation and call EFYCC their home port for the future years to come! The 2017 Sailing year has been great with the Spring UNF and EFYCC Sailors. We welcome UNF back for the Fall 2017 as well.