

Beer Can Races 2016

The Rudder Club of Jacksonville
8533 Malaga Ave.
Jacksonville, FL 32244

NOTICE OF RACE

1. RULES:

- 1.1 This series will be governed by the rules as defined in *The Racing Rules of Sailing (RRS)*.
- 1.2 This NOR applies for all races in the Rudder Club Beer Can series for the year 2016.
- 1.3 The Beer Can Series is an informal series of races designed to bring sailors to the race course that might not otherwise race. Although it is informal the RRS still apply.
- 1.4 The name of this series in no way shall be construed as encouraging drinking alcohol beverages during the race or operating any boat or piece of equipment while exceeding the alcohol blood level as prescribed by Florida law.

2. ADVERTISING: Advertising shall not be displayed

3. ELIGIBILITY AND ENTRY:

- 3.1. The races are open to all boats of all classes.
- 3.2. Eligible boats may enter the series by completing the attached entry form. This entry form is for a boat and a person in charge. If either the boat or the person in charge changes a new entry form is required.
- 3.3. There will be no formal classes.
- 3.4. There are no fees.
- 3.5. Crew member names shall be updated prior to each race.

4. SCHEDULE: Beer Can Races will be held on the 2nd and 4th Saturday of the months of June, July, and August of 2016. The dates are the on the 11th and 25th of June; the 9th and 23rd of July; and the 13th and 27th of August. Target start time will be 1500 (3PM).

5. SAILING INSTRUCTIONS: The Sailing Instructions will be posted on the Rudder Club Official Notice Board on the north exterior wall of the club and at registration.

6. VENUE: The racing area will be in the St. Johns River between the Buckman Bridge to the South and the Fuller Warren Bridge to the North.

7. COURSE: A Gate (Rabbit) Start will be used. The Gate Boat for the first and subsequent races will be as set forth in the sailing instructions.

8. SCORING:

- 8.1 A boat's total score for the day's racing will be the sum of her score for all races on that day.

One race is necessary to constitute a daily series.

- 8.2 Scoring will be in accordance with the Time on Time Portsmouth System unless all entries are of a single class then fleet scoring is in effect.

- 8.3 A list of Portsmouth ratings for all anticipated contenders will be maintained on the Club bulletin board by the Race Office. Boats not listed may obtain a rating by contacting the race office as per further information below.

- 8.4 Each boat will take their own finish time and compute corrected time based on the following formula. Corrected time equals the boats elapsed time times 100 and then divided by the Portsmouth rating. Elapsed time must be converted into hours and decimal minutes and seconds. A guide will be posted to assist in this conversion. Corrected times may be left in hours and decimal hour format.

- 8.5 There are no formal class divisions.

9. NOTICE TO COMPETITORS: Notices to competitors will be posted on the Official Bulletin Board located on the Rudder Club's North exterior wall.

10. PRIZES: There are no prizes. All awards are intrinsic.

11. Disclaimer of Liability: Sailing is an activity that has an inherent risk of damage and injury. There are no rescue boats or committee boats for this series. Competitors in this series are participating entirely at their own risk and must take into consideration the absence safety boats. See RRS 4, Decision to Race.

Completion and submission of a registration form for these races constitute an acceptance of an agreement to abide by the Racing Rules of Sailing, this Race Notice and the Sailing Instructions. The Rudder Club will not accept any liability for material damage or personal injury or death sustained in conjunction with or prior to, during or after these races.

12. FURTHER INFORMATION For further information contact Dick Allsopp: 904-314-5237 raceoffice@rudderclub.com or the Rudder Club, 8533 Malaga Ave., Jacksonville FL 32244, 904-264-4094, office@rudderclub.com.



The Rudder Club of Jacksonville, Inc.
 8533 Malaga Ave. Jacksonville, FL 32244
 (904)264-4094

BEER CAN SERIES BOAT REGISTRATION FORM
Beer Can Races

Date _____

Person in Charge _____

(See RRS 46)

Address _____

City/State/Zip _____

Telephone _____

Cell Phone _____

E-mail Address _____

Emergency Contact:

Name _____

Address _____

City/St/Zip _____

Telephone _____

Yacht Club Affiliation _____

Boat Name _____

Sail Number _____

Boat Make/Model _____

MMSI If installed _____

One Design Class: _____

Note: NAPY = North American Portsmouth

Yardstick

See:

http://offshore.ussailing.org/Portsmouth_Yardstick/Portsmouth_Yardstick_Index.htm

NAPY Class: _____

NAPY Code: _____

Cruising boats look under Offshore Classes or for help contact the Race Office at raceoffice@rudderclub.com or 904-314-5237

Crew Names:

Agreement and Statement of Understanding

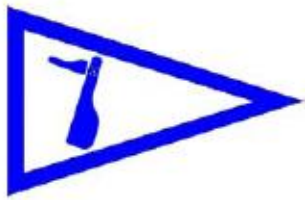
I understand that sailing is an activity that has an inherent risk of damage and injury and that my decision to race in these events is entirely at my own risk. See RRS 4, Decision to Race. Prior to racing I will have obtained a signed release from each member of my crew. I further agree to abide by the rules, regulations and sailing instructions of the Series Races, the ISAF and the United States Sailing Association. I certify that I am the "person in charge" of this boat in accordance with RRS 46.

To the fullest extent permitted by law, I hereby waive any rights I may have to sue the race organizers (organizing authority, race committee, protest committee, host club, sponsors, or any other organization or official) involved with the event with respect to personal injury or property damage suffered by myself or my crew as a result of our participation in this event and hereby release the race organizers from any liability for such injury or damage.

NOTE: Minors must present a copy of this form counter-signed by a parent or guardian before being allowed to race. "

Signature Person in Charge _____ Date _____

Parent/Guardian's Signature _____ Date _____
 if person in charge is a minor



Beer Can Series Races 2016

The Rudder Club of Jacksonville
8533 Malaga Ave.
Jacksonville, FL 32244

SAILING INSTRUCTIONS

1. RULES:

- 1.1 This series of races is governed by the rules as defined in *The Racing Rules of Sailing*.
- 1.2 These Sailing Instructions apply for all races in the Rudder Club Beer Can series for the year 2015.
- 1.3 The Beer Can Series is an informal series of races designed to bring sailors to the race course that might not otherwise race. Although it is informal the RRS still apply.
- 1.4 The name of this series in no way shall be construed as encouraging drinking alcohol beverages during the race or operating any boat or piece of equipment while exceeding the alcohol blood level as prescribed by Florida law.
- 1.5 Racing Rule 26 is changed by SI 10.8
- 1.6 Racing Rules 35 and A4.1 are changed by SI 12.
- 1.7 Racing Rule 63 is changed by SI 13
- 1.8 Racing Rule A9 is changed by SI 14

2 NOTICE TO COMPETITORS: Notices to competitors will be posted on the Official Bulletin Board located on the Rudder Club's North exterior wall.

3 CHANGES IN THE SAILING INSTRUCTIONS: Any changes to the Sailing Instructions will be posted on the Rudder Club web site and on the Official Bulletin Board located on the Rudder Club's North exterior wall no later than 1430 on the day of the race. Oral changes to the Sailing Instructions may be communicated to each boat prior to its warning signal and are allowed only on the water.

4 SIGNALS MADE ASHORE:

- 4.1 Signals made ashore will be displayed from the flag pole located on the North side of the Rudder Club.
- 4.2 The warning signal for the first class will be made not less than 30 minutes after Code Flag AP is lowered.

5 SCHEDULE:

Beer Can Races will be held on the 2nd and 4th Saturday of the months of June, July, and August of 2016. The dates are the on the 11th and 25th of June; the 9th and 23rd of July; and the 13th and 27th of August.

- 5.1 Changes of scheduled dates will be promulgated by a change to the NOR. Target start time will be 1500. There is no formal competitors meeting; however, an informal competitor gathering is encouraged at 1400 to discuss start procedures; select the gate boat for the first race; and decide on a course. Time on time scoring

will be in effect so no distance calculations are necessary.

6 CLASS FLAGS: Boats will race as one class. There are no class flags. A modified Gate (Rabbit) Start will be used (See SI 10)

7 RACING AREA

The racing area will be in the St. Johns River between the Buckman Bridge to the south and the Fuller Warren Bridge to the north as depicted on NOAA Chart 11492.

8 COURSES:

The course will be as posted by the initial Gate Boat.

9 MARKS:

- 9.1 Marks may be either inflated marks as set by the first gate boat or government navigation marks and FCSA River marks as depicted on Addendum A. If using River Marks (Addendum A), in addition to the marks shown, an inflatable orange mark may be set to windward and designated "X" (XRAY).

10 START

The start will be a modified Gate (Rabbit) Start as follows:

- 10.1 An informal competitor's meeting will be held at 1400 during which the Gate Boat will be determined (third boat to register or a volunteer).
- 10.2 The person in charge of the Gate Boat will be the Race Officer for that race.
- 10.3 The Gate Boat will post the course and the start time.
- 10.4 If subsequent races are run the Gate Boat is the boat that was first to finish in the preceding race.
- 10.5 The initial Gate Boat will drop a Port Limit Mark and trail another mark at least one boat length behind as an extension of the Gate Boat.
- 10.6 The start will be between the Port Limit Mark and the Gate Boat (trailed mark).
- 10.7 Before starting boats are not allowed to be on the windward side of the Gate Boat or sail above close hauled and must remain clear of boats to leeward. Boats needing to slow can ease sail.

10.8 Starting Sequence

Signal	Sound	Minutes before starting gate opens
Warning	1 sound	5
Start	1 sound	As signaled
Gate Closed	1 long sound	

10.9 Just before the starting time the Gate Boat will commence a port tack close-hauled course leaving the Port Limit Mark to port and make the starting sound signal as it passes the mark. All other boats will cross the start line on starboard tack between the Port Limit Mark and the Gate Boat.

10.10 After 60 seconds, or after all boats have started, whichever is earlier, the Gate Boat shall close the gate by making 1 long sound signal. The gate may then tack and recover the towed marker as desired.

10.11 If the Gate Boat is obstructed or prevented from executing the start procedure it will abort the start by bearing away and making 3 sound signals. A new start sequence will begin as soon as possible.

10.12 The horn and trailed mark will be passed to the next Gate Boat after the finish.

11 FINISH

The finish line will be an imaginary line perpendicular to the final leg of the course and extend a distance approximately equal to that of the total waterline length of all boats racing. It will extend to the right of the Port Limit Mark relative to the final leg

12 TIME LIMIT

The time limit for the first yacht in each starting class to finish is 90 minutes from her start. Boats failing to finish within 30 minutes after the first boat will be scored "DNF." This changes Rule 35 and A4.1.

13 PROTESTS

13.1 Protest forms are available at the Rudder Club Race Office.

13.2 For each class the protest time is two hours after the last boat has finished the last race of the day.

13.3 "Arbitration" (Appendix T Section D) may be used - Prior to protest hearing, parties to protests between two or more boats, where the alleged infringement is of a rule contained in Part 2, are invited to resolve the issues at an informal protest mediation. Participation is entirely voluntary, and is not a pre-condition to participation in a "protest hearing." (rule 63 is changed by the following instructions)

13.4 For protests involving an alleged breach of a Part 2 rule, a short mediation hearing shall be held prior to a protest hearing.

13.5 After the written protest form is properly lodged, one representative from each boat will meet with the mediator; no witnesses will be allowed. Protests not

resolved by mediation will be lodged with the protest committee.

13.6 A boat that accepts fault at the mediation hearing shall receive a penalty score of 30% of the number of boats entered (rounding 0.5 upward) added to her finishing position, except that she shall not be scored worse than DSQ. The scores of other boats shall not be changed; therefore two boats may receive the same score.

13.7 The mediator is neither the race committee nor the protest committee; therefore, decisions of the mediator cannot be grounds for redress or be appealed.

13.8 Should a formal protest be desired, it can be filed on line, using the Protest Form format contained in the RRS. It will be filed with the raceoffice@rudderclub.com and a formal protest meeting will be scheduled.

14 SCORING

14.1 A boat's total score for the day's racing will be the sum of her score for all races on that day. One race is necessary to constitute a daily series.

14.2 Scoring will be in accordance with the Time on Time Portsmouth System.

14.3 A list of Portsmouth ratings for all anticipated contenders will be maintained on the Club bulletin board by the Race Office. These are also available at <http://www.ussailing.org/racing/offshore-big-boats/portsmouth-yardstick/current-tables/>. Boats not listed may obtain a rating by contacting the Race Office or Dick Allsopp at 904-314-5237.

14.4 Each boat will take its own finish time and compute corrected time based on the following formula. Corrected time equals the boats elapsed time times 100 and then divided by the Portsmouth rating. Elapsed time must be converted into hours and decimal minutes and seconds. A guide will be posted to assist in this conversion. Corrected times may be left in hours and decimal hour format.

14.5 Elapsed time is based on the posted start time for the race and a boats finish time.

14.6 There are no formal class divisions.

15 SAFETY REGULATIONS

15.1 Yachts shall not impede the passage of a vessel which can safely navigate only within a narrow channel, and give way to commercial fishing vessels while fishing or vessels with restricted ability to maneuver.

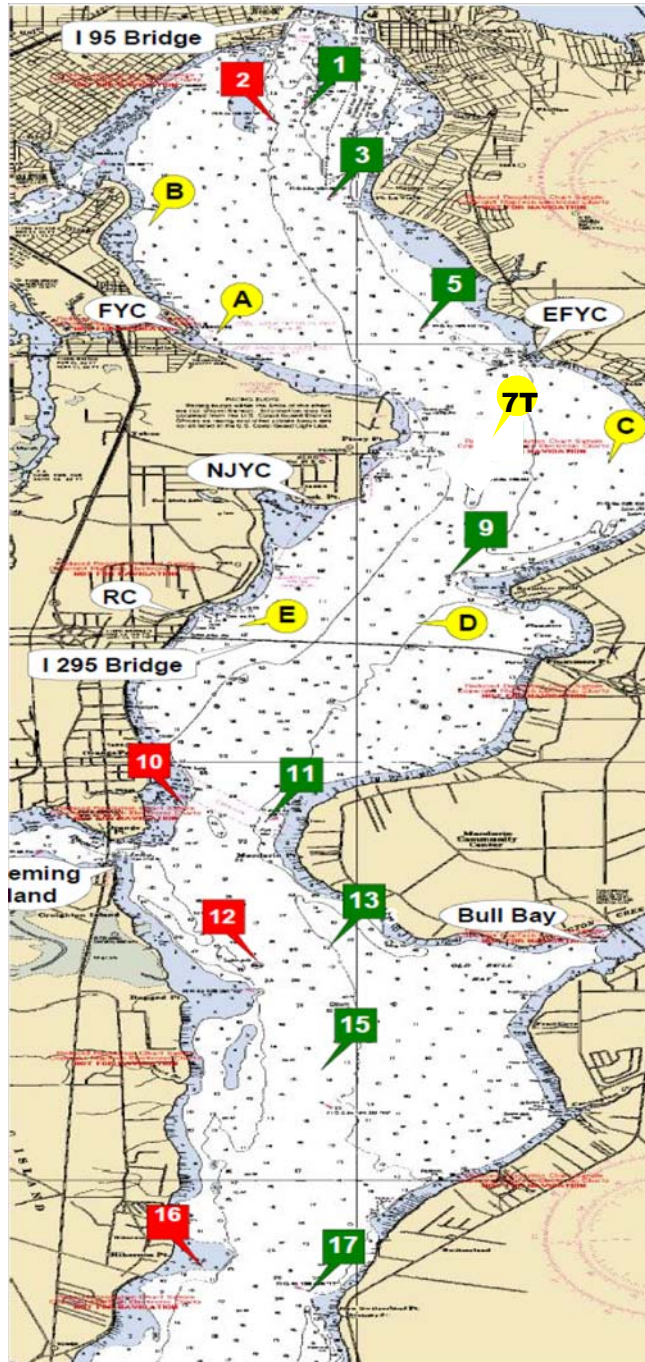
15.2 In accordance with Rule 42.3(i), providing no significant advantage is gained, a boat may employ propulsion using an engine or other method to remain clear of a non-racing vessel when required by Inland Rules.

16 PARTICIPATION: Sailing is an activity that has an inherent risk of damage and injury. There are no rescue boats or committee boats for this series. Competitors in this series are participating entirely at their own risk and must take into consideration the absence safety boats. See RRS 4, Decision to Race. Completion and submission

of a registration form for these races constitute an acceptance of and agreement to abide by the Racing Rules of Sailing, the Race Notice and these Sailing Instructions.

First Coast Sailing Association Race Marks

Distance	nm
1 to 3	1.039
1 to 5	2.787
1 to 7 _T	4.643
1 to A	2.793
1 to B	1.570
3 to 5	1.773
3 to 7 _T	3.615
3 to 9	4.638
3 to A	1.829
3 to B	1.126
3 to C	3.763
5 to 7 _T	1.863
5 to 9	2.926
5 to A	1.468
5 to B	2.299
5 to C	2.029
5 to D	3.486
7 to 9	1.095
7 to C	0.977
7 to D	1.697
7 to E	2.240
9 to C	1.726
9 to D	0.618
9 to E	1.486
A to B	1.523
A to C	3.140
B to C	4.303
C to D	2.328
C to E	3.111
D to E	1.127
11 to 13	2.317
11 to 15	3.400
11 to 17	5.631
11 to 17A	6.836
13 to 15	1.109
13 to 17	3.360
13 to 17A	4.575
13 to 18	5.585
15 to 17	2.252
15 to 17A	3.467
15 to 18	4.476
17 to 17A	1.216
17 to 18	2.225
17A to 18	1.010
18 to 20	2.038



Green 1
N 30° 17.813
W 81° 40.411

Red 2
N 30° 17.628
W 81° 40.635

Green 3
N 30° 16.780
W 81° 40.259

Green 5
N 30° 15.142
W 81° 39.466

Green 7 See Race Mark "7T"
N 30° 13.305
W 81° 39.077

Green 9
N 30° 12.216
W 81° 39.237

Red 10
N 30° 09.513
W 81° 41.359

Green 11
N 30° 09.305
W 81° 40.754

Red 12
N 30° 07.240
W 81° 40.800

Green 13
N 30° 07.036
W 81° 40.224

Green 15
N 30° 05.926
W 81° 40.283

Red 16
N 30° 04.038
W 81° 41.254

Green 17
N 30° 03.671
W 81° 40.393

Green 17A
N 30° 02.457
W 81° 40.522

Red 18
N 30° 01.445
W 81° 40.551

Green 19
N 30° 01.335
W 81° 40.279

Red 20
N 29° 59.822
W 81° 39.126

**Note: If set these marks will be an inflatable mark.

Race Mark "A"
N 30° 15.090 W 81° 41.160

Race Mark "B"
N 30° 11.648 W 81° 39.522

Race Mark "C"
N 30° 13.564 W 81° 37.989

Race Mark "D"
N 30° 16.581 W 81° 41.539

Race Mark "E"
N 30° 11.648 W 81° 40.822

Race Mark "7T"
N 30° 13.305 W 81° 39.077