

June 4th
2016
Jessie Ball Regatta



EPPING FOREST
YACHT & COUNTRY CLUB





Jessie Dew Ball

Ball duPont had met and befriended Alfred I DuPont when she was 14 and he 34, and they maintained a correspondence thereafter. After the January 1920 death of his second wife, they entered a courtship which resulted in marriage on January 22, 1921. The couple made their home in the Nemours Mansion and Gardens in Wilmington, Delaware. Retired from teaching, Ball duPont oversaw maintenance of the family estate, took over raising her husband's daughter, Denise, and began to assist duPont in his business.

In 1923, duPont hired Edward Ball, one of Ball duPont's four siblings to survive to adulthood. Ball relocated to Delaware to become manager of the Clean Food Products Company and additionally to advise duPont and manage the estate fortune. The arrival of her brother freed Ball duPont from some of her business concerns so that she could dedicate more time to her charities.

In 1927, the family relocated to Florida, taking up residence in their newly built 58 acres (230,000 m²) estate on the St. John's River, Epping Forest, which was named after the home of Mary Ball Washington, the mother of George Washington, who was Jessie's distant relative. duPont established his main business industry in Jacksonville, with most of his \$34 million assets being transferred to his newly formed Nemours Securities, Inc. Ball also moved to

Florida, and duPont and Ball expanded their business interests in the area, acquiring substantial real estate and buying into the Florida National Bank. In 1935, Ball duPont became the director of that bank. Meanwhile, Ball duPont also undertook the preservation of Stratford Hall Plantation, where Confederate General Robert E. Lee had been born.¹ She also renovated and modernized the Lee family residence Ditchley, near Kilmarnock Virginia. In 1940, she purchased Hurstville and had the house restored as a residence for her sisters.

On April 29, 1935, Alfred duPont died, leaving Ball duPont as his primary beneficiary. He also established a substantial trust which Ball duPont administered, along with her brother and duPont's son-in-law, Elbert Dent. She served as president of two of the organizations set up by the trust, the Nemours Foundation and the Alfred I. duPont Testamentary Trust. She also sat on the boards at the Alfred I. Institute for Crippled Children at Nemours and the St. Joe Paper Company in Jacksonville, serving as Chairman at the latter.



Jessie Ball Regatta
Women's Series Race #2 of 4
Saturday, June 4th, 2016 – EFYCC

Notice of Race

1.0 RULES

The Regatta will be governed by *The Racing Rules of Sailing* (RSS), the rules of First Coast Sailing Association and this NOR.

These rules may be altered by the Sailing Instructions.

2.0 ELIGIBILITY

2.1 The race is open to all boats with a current PHRF certificate from First Coast Sailing Association

(FCSA). www.sailjax.com

2.2 Boats that do not have a current PHRF rating assigned by FCSA may obtain a provisional rating (\$35.00 first-time annual fee) that will be submitted to FCSA for review and issuance of a Rating Certificate. Boats not having a valid rating may obtain an uncontested temporary PHRF rating on a one-time basis. You must have a valid PHRF rating to be scored for year-end awards.

2.3 Participating boats shall have an identifying sail number on her mainsail and headsails with and LP not exceeding 130%.

2.4 Eligible boats may enter by completing a registration with Epping Forest Yacht and Country Club, which is the Organizing Authority.

2.5 All female crews are encouraged to register. Competitor's requirements for mixed crew eligibility sailings are: at least 50% of those on board shall be female and the boat must be helmed by a female from the preparatory signal until finish.

3.0 CLASSES

3.1 There are three official classes for the Regatta. Performance Class Non-Spinnaker All Female (100% female crew), Performance Class Spinnaker All Female (100% female crew) and the Cruiser Class All Female or Mixed Crew. The Mixed crew must have a female at the helm at all times during the regatta.

3.2 Boats sailing with a mixed crew (at least 50% female crew) will sail in the Mixed Crew class.

3.3 Boats will be scored in the FCSA Annual Series based on the class designated on its entry form.

4.0 SCHEDULE OF EVENTS

4.1 Friday, June 3rd: Complimentary docking at EFYCC the evening before the race.

4.2 Saturday, June 4th: **9:00-10:00a.m. Complimentary Coffee and Pastries; 10:00a.m.-11:45a.m. Registration; 12:00p.m. Competitors Meeting; 12:55p.m. Warning Signal; 1:00p.m. Race Start.** Post-race awards ceremony will have complimentary beer and hors d' oeuvres.

5.0 ENTRY FEE/ REGISTRATION

5.1 Entry fee is \$30.00 for EFYCC Members and \$35.00 for Non-Members. Payment may be in the form of cash, check or through the club membership point of sale system. Please make checks payable to Epping Forest Yacht and Country Club. If paying cash please bring the exact amount due if possible. Entry fee must be accompanied by an entry form (Standard Race Entry Form available at www.sailjax.com) during registration. If paying by check ahead of time, please include your registration form and mail to: Epping Forest Yacht and Country Club c/o Harbormaster 1830 Epping Forest Drive Jacksonville, Fl. 32217. Boats may always register between the hours of 10:00a.m. through 11:45a.m. on the day of the race.

6.0 SAILING INSTRUCTIONS

6.1 Sailing Instructions will be available to be downloaded from the First Coast Sailing Association website www.sailjax.com. Copies will also be available at the registration table on the day of the race.

7.0 COURSE

7.1 Course will be a single PHRF Time on Distance race using government navigation marks and or inflatable markers.

8.0 SCORING THE RACE

8.1 Classes will be scored using the PHRF Time on Distance system.

8.2 The Low Point scoring system of Appendix A will apply.

8.3 Results of this race will be forwarded to the First Coast Sailing Association for inclusion in the Annual Series scoring.

9.0 RACE PRIZES

9.1 Prizes will be awarded in each class based on attendance in the first, second and third place positions.

10.0 INFORMATION

10.1 For additional information or questions concerning this Regatta please contact the EFYCC Harbormaster Keith Keller (904) 739-7150 or email kkeller@efyc.com.





Jessie Ball Regatta
Women's Series #2 of 4
Saturday, June 4th, 2016 – EFYCC Marina
Sailing Instructions

1. RULES

1.1 The Regatta will be governed by *The Racing Rules of Sailing* (RRS) except as modified by the rules of the First Coast Sailing Association and these Sailing Instructions

1.2 Racing Rules A4 and A5 are changed by SI 12.3 as follows: "A boat starting later than ten minutes after her starting signal will be scored "did not start" without a hearing".

1.3 Racing Rules A4 and A5 of the RRS are changed by SI 14.1 as follows: "A boat failing to finish within 60 minutes in corrected time after first boat in her class will be scored "Did not finish" without a hearing".

2. ENTRIES

2.1 Eligible boats are those who have officially entered by completing a registration form with EFYCC in advance or during the registration period as set forth in the Notice of Race.

2.2 Additional eligibility requirements and class definitions are defined in the Notice of Race Articles 2 and 3.

3. SAFETY

3.1 All Competitors are required to conform to the U. S. Coast Guard regulations and the RRS concerning personal floatation devices and other required equipment.

3.2 Boats shall not impede the passage of a vessel that can safely navigate only within a narrow channel or commercial fishing vessels while fishing or vessels with restricted ability to maneuver. Racing boats interfering with other vessels may be subject to protest by the Race Committee or contestants and possible disqualification.

3.3 Race Committee will monitor VHF channel 72.

3.4 Boats shall attempt to check in with the Race Committee by sailing past on the non-course side prior to their class Warning Signal.

3.5 Boats withdrawing from a race prior to finishing shall make every effort to ensure that the Race Committee is notified that they have withdrawn.

4. NOTICE TO COMPETITORS

4.1 Notice to competitors will be posted on the official notice location on the Mariner's Deck window at EFYCC Marina. Or, given out in packets at the registration table prior to the Captain's meeting.

5. CHANGES IN THE SAILING INSTRUCTIONS

5.1 Any change in the Sailing Instructions will be posted in accordance with SI 4.1 before 12:00p.m. on the day of the race.

5.2 Oral changes to the Sailing Instructions may be communicated to each boat while on the water and prior to her warning signal.

6. SIGNALS MADE ASHORE

6.1 Signals made ashore will be displayed on the club flag staff, next to the Harbormasters office.

6.2 Code Flag "AP", Answering Pennant, with two sounds means "The race is postponed. It is advised not to leave the Harbor area." The time of the warning signal will be posted on the Notice Window before the lowering of the "AP" flag with one sound.

7. RACE SCHEDULE

7.1 Saturday, June 4th, one race.

7.2 Schedule of Events: **Registration:** 10:00-11:45 am **Competitor's Meeting:** 12:00 noon **Warning Signal** 12:55 **Start** 1:00pm

8. CLASSES

8.1 There are 3 classes: Performance Spinnaker All Female, Performance Non-spinnaker All Female and Cruiser Class either Mixed Crew or All Female crew all under the designation of Cruiser Class for entry and recording race results.

8.2 "**All Female Class**": The All-female Class will consist of a 100% female crew.

8.3 "**Mixed Class**": A Mixed Crew in Cruiser Class will be offered and will consist of at least a 50% female crew. Competitor's requirements for mixed crew eligibility sailings are: at least 50% on board shall be female and the boat must be helmed by a female from the preparatory signal until finished.

8.4 Boats will be scored in the FCSA Annual Series based on the class designated on its entry form.

8.5 Class flags are listed on page 5 of the Sailing Instructions.

9. THE RACING AREA

9.1 The racing area shall be between the Buckman Bridge to south and the Fuller Warren Bridge to the north as depicted on NOA Chart 11492.

10. COURSES

10.1 The official race course will be announced at the Skippers Meeting at 12:00 noon the day of the race.

10.2 Course(s) will be as announced and posted alongside the Notice of Race on the outside downstairs window of the Captains Deck at the competitors meeting.

11. MARKS

11.1 Marks will be yellow and / or orange inflatable marks, stationary government marks or other marks as designated by the Race Committee.

11.2 One single race will be offered for each class. The course may be a combination of Navigation Marks on the river and marks set by the Race Committee.

12. START

12.1 The Starting Line will be a line between an orange flag flown on the Race Committee Boat and an inflatable mark set toward the left side of the course from the Committee Boat.

12.2 Boats whose warning signal has not been made shall keep clear of the starting area.

12.3 A boat starting later than ten minutes after her starting signal will be scored "Did Not Start" without hearing. This changes Rules A4 and A5.

13. THE FINISH

13.1 The Finish Line will be between an orange flag flown on the RC Boat and an inflatable mark set to the left side relative to the final leg of the course.

14. TIME LIMIT

14.1 The time limit shall be 3 hours for each class. A boat failing to finish within 60 minutes in corrected time after the first boat in her class will be scored "Did Not Finish" without a hearing. This changes RRS Rule 35 and Rule A4.1.

15. PROTESTS

15.1 Protests shall be filed with RC. Protest time will end one hour after RC Boat docks after the racing.

15.2 Protest notices will be posted on the official notice location on the Mariner's Deck window at EFYCC Marina.

16. SCORING

16.1 Classes will be scored using PHRF Time on Distance.

16.2 The Low Point scoring system of RRS Appendix A will apply.

17. RESULTS


17.1 Results will be announced at Epping Forest Marina following the race. The results will also be posted on the FCSA website www.sailjax.com.

FURTHER INFO: Keith Keller, Harbor Master (904) 739 - 7150

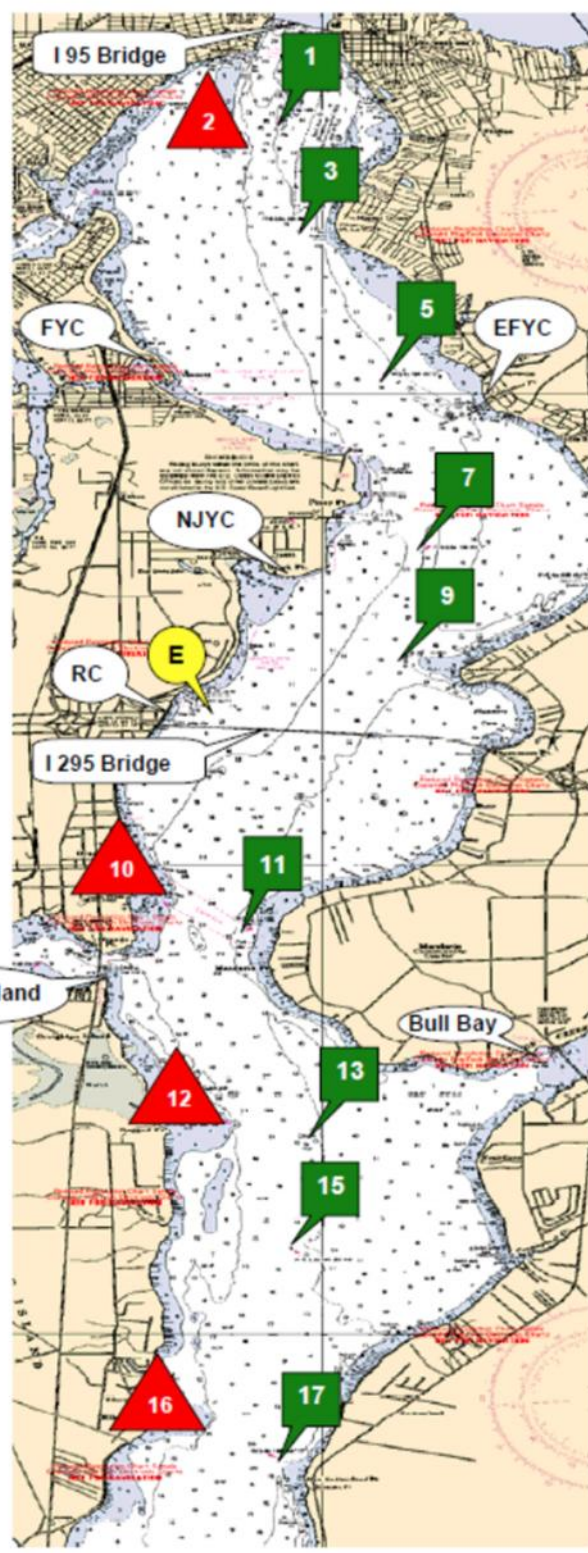


- 1 to 3 1.104 nm
- 1 to 5 2.787 nm
- 1 to 7 4.643 nm
- 3 to 5 1.703 nm
- 3 to 7 3.546 nm
- 5 to 7 1.863 nm
- 5 to 9 2.926 nm
- 7 to 9 1.095 nm
- 7 to E 2.240 nm
- 9 to E 1.486 nm

- 11 to 13 2.317 nm
- 11 to 15 3.400 nm
- 11 to 17 5.631 nm
- 13 to 15 1.109 nm
- 13 to 17 3.360 nm
- 15 to 17 2.252 nm



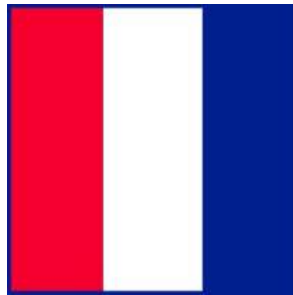
 * Marks 2, 10, 12, 16 are well placed. Do not sail out of the channel without local knowledge.



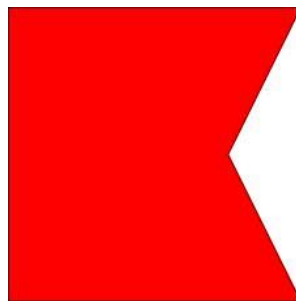
From 2009
USCG Light List

- River Mark G1
N 30° 17.813
W 81° 40.411
- River Mark R2
N 30° 17.628
W 81° 40.635
- River Mark G3
N 30° 16.719
W 81° 40.218
- River Mark G5
N 30° 15.142
W 81° 39.466
- River Mark G7
N 30° 13.305
W 81° 39.077
- River Mark G9
N 30° 12.216
W 81° 39.237
- Race Mark "E"
N 30° 11.648
W 81° 40.822
- River Mark R10
N 30° 09.513
W 81° 41.399
- River Mark G11
N 30° 09.305
W 81° 40.794
- River Mark R12
N 30° 07.240
W 81° 40.800
- River Mark G13
N 30° 07.036
W 81° 40.224
- River Mark G15
N 30° 05.926
W 81° 40.283
- River Mark R16
N 30° 04.038
W 81° 41.254
- River Mark G17
N 30° 03.671
W 81° 40.393

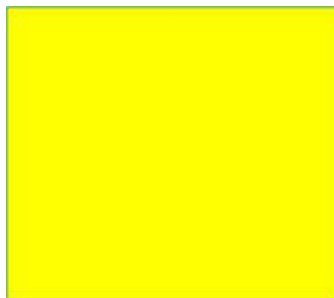
Class Signal Flags Description:



Spinnaker All Female Class "T"



Non-Spinnaker All Female Class "B"



Cruiser Class All Female or Mixed Crew "Q"

