



St. Augustine Yacht Club

Notice of Race

SAYC WEDNESDAY NIGHT RACE SERIES 2016

March 9th- November 9th

The Wednesday Night Races are our most popular sailing event. Races are open to anyone interested in fun and friendly competition. This year there will be 18 WNRS. They will usually be held every other Wednesday evening in the river north of the Vilano Beach bridge. New this year, sailors will be able to enter one time for the season long series and will qualify for series awards by competing in 10 of the races. The new High Point Percentage scoring system allows everyone to miss some of the races and not be penalized. You will be scored on how well you do when you do race, and when you do well against more boats the higher your score will be.

All racers and crew are invited to the St. Augustine Yacht Club after every WNR to hear the evenings results and enjoy a post-race happy hour.

1. **Rules:** The St. Augustine Yacht Club (SAYC) is the Organizing Authority for the WNR series. The series shall be governed by *The Racing Rules of Sailing 2013-2016 (RRS)*, and the PHRF rules of the FCSA (<http://www.sailjax.com>).
 - 1.1 Racing rule A9 is changed by NOR 9.2-9.5.
2. **Advertising:** Advertising shall not be displayed
3. **Eligibility and Entry:**
 - 3.1 The races are open to all PHRF sailboats.
 - 3.2 The designated skipper shall be 21 years of age or older.
 - 3.3 Prior to racing each boat shall be registered and shall submit the proper fee.
 - 3.4 Boats may enter by registering on the SAYC website (www.staugustineyachtclub.com) or by mailing the entry form attached to the NOR to RCOS, St. Augustine Yacht Club, 442 Ocean Vista Ave., St. Augustine, Florida 32080.
 - 3.5 Anticipated classes are Cruising Class, Non-Spin Class, and Spin Class
 - 3.6 All boats should have a current PHRF rating issued by the First Coast Sailing Association. See <http://sailjax.com> for forms to apply. New boats may sail with a provisional and temporary rating provided by SAYC while their FCSA application is processed. No boat will be scored for the series without an FCSA official rating. The race scores for provisional rated boats will be adjusted for the series once they receive their FCSA rating.
4. **Fees:** Entry fee per boat for the 18 race series is \$100 for non SAYC members and \$75 for SAYC members. Entries placed on the SAYC website may make fee payment by PayPal. Otherwise Entry Fee checks made out to the St. Augustine Yacht Club should be

sent to the St. Augustine Yacht Club, 442 Ocean Vista Ave., St. Augustine, FL 32080. SAYC members may also elect to charge the entry fee to their account.

5. **Schedule:** The race series will consist of 18 races. The scheduled dates are March 9, 23, April 6, 20, May 4, 18, June 1, 15, 29, July 13, 27, August 17, 31, September 14, 28, October 12, 26, November 9. Series Awards will be made at the Annual Sailing Awards Party scheduled for Saturday December 3.

- 5.1 If determined necessary, make up race dates or changes in schedule will be made by SAYC and a notice to competitors will be posted.

- 5.2 The scheduled time of the warning signal for the first race each day is 16:55.

6. **Sailing Instructions:** The Sailing Instructions will be available after 12:00 on March 1, 2016, will be posted on the SAYC website www.staugustineyachtclub.com and on the SAYC bulletin board.

7. **Venue:** The racing area will normally be in the river north of the Vilano Bridge.

- 7.1 Attachment "A" shows the location of the racing area.

8. **Scoring:** Races will be scored by PHRF time on distance.

- 8.1 Scores for each individual WNR will be Low Point in accordance with Appendix A of the RRS.

- 8.2 A boat's total score for the series will be determined by the HIGH POINT PERCENTAGE SCORING SYSTEM using the sum of its 10 best race scores. To qualify for inclusion in the final results a boat shall compete (i.e. come to the starting area) in at least 10 races.

- 8.3 The HIGH-POINT PERCENTAGE SCORING SYSTEM, based on the US sailing prescription for scoring a long series, will apply and changes rule A9 of the RRS. Define "N" to be the number of boats that compete in a race. Each boat finishing that race, and not thereafter retiring or being disqualified, will be scored according to the high point system as follows:

First	N
Second	N-1
Third	N-2
Fourth	N-3

Each place thereafter subtract 1 point

- 8.4 All other boats that compete in that race, including any that finish and thereafter retire or are disqualified, will score 0 points. Boats that do not compete in that race (DNC) will not be scored.

- 8.5 The series score for each boat will be a percentage calculated as follows: divide the sum of her 10 best race scores, by the sum of the points she would have scored if she had placed first in all of those races, multiplied by 100. Example: A boat's 10 best scores are:

N	7	6	8	4	10	10	6	7	5	8
Finish	3	1	5	3	2	3	3	2	3	6
Score	5	6	4	2	9	8	4	6	3	3

The Sum of her scores is 50. Divide 50 by what the sum of her scores would have been if she had finished first in all of those races or 71. This equals $.704 \times 100 = 70.4$. This is the series score for the example boat.

- 8.6 The qualified boat with the highest series score is the winner, and others are ranked accordingly.
9. **Prizes:** Series Trophies will be awarded for first, second, and third in each class.
10. **Radio Communication:** The Race Committee Boat will communicate to racers on channel 72. Except in an emergency, a boat while racing shall neither make or receive radio communications not available to all boats. This restriction also applies to mobile telephones
11. **Disclaimer of Liability:** Sailing is an activity that has an inherent risk of damage and injury. Competitors in this series are participating entirely at their own risk. See RRS 4, Decision to Race. Completion and submission of a registration form for these races constitute an acceptance of an agreement to abide by the Racing Rules of Sailing, this Race Notice and the Sailing Instructions.
12. **Notice to Competitors:** Notices to Competitors will be posted on the SAYC website. www.staugustineyachtclub.com
13. **Further Information:** For further information, contact Dana Hunter, RCOS. sailbluesky@comcast.net, 904 501 3668

**ST AUGUSTINE YACHT CLUB
YACHT RACING ENTRY FORM**

RACE: Wenesday Night Race Series 2016 **DATE:** _____

YACHT NAME: _____ **SAIL #:** _____

YACHT MAKE/MODEL: _____ **LENGTH:** _____ **COLOR:** _____

PHRF RATING: _____ **US SAILING MEMBER #** _____

FLEET: _____ **(CRUISER, NON-SPIN, SPINAKE)**

OWNER'S NAME: _____ **PHONE:** _____

SKIPPER'S NAME: _____ **PHONE:** _____

CELL PHONE: _____ **FAX:** _____

EMAIL: _____

MAILING ADDRESS WITH ZIP: _____

EMERGENCY CONTACT: _____ **PHONE:** _____

VESSEL NORMALLY DOCKED AT: _____

The undersigned, for and on behalf of himself/herself, his/her guests, and the members of the crew of his/her yacht, hereby assumes all risk of accident and expressly agrees that the St. Augustine Yacht Club shall not be liable, under any circumstance, for any loss or injury to participants or others or the loss or damage to any yacht. The undersigned further agrees to indemnify and does hereby indemnify and hold the St. Augustine Yacht Club free and harmless under, from and against any and all losses, costs, damages, attorney's fees and liability of any kind or nature whatsoever growing out of or resulting from participation in any SAYC sponsored race.

SIGNED: _____ **DATE:** _____

Mail to: Dana Hunter RCOS
c/o St. Augustine Yacht Club
442 Ocean Vista Avenue
St. Augustine, Florida 32080

Attachment “A”: Map of sailing area





Wednesday Night Race Series 2016

St. Augustine Yacht Club

442 Ocean Vista Ave., St. Augustine, Florida 32085

SAILING INSTRUCTIONS

1. RULES

1.1 The series shall be governed by *The Racing Rules of Sailing 2013-2016 (RRS)*.

1.2 Racing Rule A9 is changed by

2. **NOTICE TO COMPETITORS** Notices to competitors will be posted on the SAYC website www.staugustineyachtclub.com

3. **CHANGES TO SAILING INSTRUCTIONS** Any change to the sailing instructions will be posted on the SAYC website no later than 13:00 on the day of a race. Oral changes to the Sailing Instructions may be communicated to each boat prior to its warning signal and are allowed only on the water.




4. **SIGNALS MADE ASHORE** No signals shall be made ashore.

5. **SCHEDULE OF RACES** Series races are scheduled for Wednesdays as follows:

WNR #1	March 9	WNR #10	July 13
WNR #2	March 23	WNR #11	July 27
WNR #3	April 6	WNR #12	August 17
WNR #4	April 20	WNR #13	August 31
WNR #5	May 4	WNR #14	September 14
WNR #6	May 18	WNR #15	September 28
WNR #7	June 1	WNR #16	October 12
WNR #8	June 15	WNR #17	October 26
WNR #9	June 29	WNR #18	November 9

5.1 The scheduled time of the warning signal for the first race each evening is 16:55

6. CLASS FLAGS

Cruising Class	Pennant #5	
Non-Spin Class	Pennant #6	
Spinnaker Class	Pennant #7	



7. **RACING AREA** The racing area will be in the Matanzas River, ICW, just north of the Vilano Beach bridge.
8. **COURSES** Courses for each class will be announced on Channel 72 prior to the warning signal. Courses other than those outlined in the sailing instructions may be used.
- 8.1 The diagrams in Attachment “A” show likely courses for **cruising** and **non-spin** class boats **only**.
- 8.2 If conditions allow one of these courses SS, SN, LS, LN, will be used and designated for the **cruising** and **non-spin** classes on a white board on the committee boat.
- 8.3 The first letter in the course designation is S for Short or L for Long. The second letter is a S, for start toward the south, or N, for start toward the north.
- 8.4 SS course for the **cruising** and **non-spin** classes is one lap to the south around Mark 57 and a buoy to be set off Boating Club Road, beginning and ending at the start finish line off of Day Mark 55.
- 8.5 SN course for the **cruising** and **non-spin** classes is one lap to the north around a buoy placed off Boating Club Road, beginning and ending at the start finish line off of Day Marker 55.
- 8.5 LS, the long course for the **cruising** and **non-spin** classes, will be one lap plus an additional leg which will begin with a turn around Day Mark 55, sailing north again to the buoy off Boating Club Road, and back to the Finish line off Marker 55.
- 8.6 LN, the long course for the **cruising** and **non-spin** classes, will be one lap plus an additional leg which will begin with a turn around Day Mark 55, sailing south again to Day Marker 57, and back to the finish line off Marker 55.
- 8.7 The **spinnaker** class will sail two complete laps beginning and ending at the start finish line off of Day Marker 55. **Long** course for the spinnaker class will be an additional or third lap.
- 8.8 If the start for the **spinnaker** class is to the south, they will sail from the start line to Day Marker 57, then north to the buoy off Boating Club Road, then south back around Day Marker 57, and back north around the buoy off Boating Club Road, then back to the south and the finish line off Day Marker 55. A north course would be a start to the north and the reverse order.
- 8.9 All marks will be left to port.
- 9.0 **MARKS**
- 9.1 Marks may be either government navigation marks as depicted on attachment “A” or inflatable yellow race buoy.
- 9.2 Unless otherwise announced, for the **spinnaker** class the committee boat and Day Marker 55 are not marks of the course except for the start and finish.



- 10.0 START** The starting line will be between an orange flag flown on the Race Committee Boat and a mark. The mark will usually be Day Mark 55. The mark may be an inflatable buoy.
- 11. FINISH** The finish line will be between an orange flag on the Committee Boat and a mark. The race committee will normally use the same line for starting and finishing.
- 12. TIME LIMIT** The time limit for the first yacht in each class to finish is 90 minutes from her start.

13. PROTESTS

- 13.1 Protest forms are available at the SAYC club house.
- 13.2 For each class the protest time is 90 minutes after the last boat has finished the last race of the day or the race committee signals no more racing today, whichever is later.
- 13.3 Section D of Appendix T, Arbitration, is in effect.

14. SCORING Races will be scored by PHRF time on distance.

- 14.1 Scores for each individual WNR will be Low Point in accordance with Appendix A of the RRS.
- 14.2 A boat's total score for the series will be determined by the HIGH POINT PERCENTAGE SCORING SYSTEM using the sum of its 10 best race scores. To qualify for inclusion in the final results a boat shall compete (i.e. come to the starting area) in at least 10 races.
- 14.3 The HIGH-POINT PERCENTAGE SCORING SYSTEM, based on the US sailing prescription for scoring a long series, will apply and changes rule A9 of the RRS. Define "N" to be the number of boats that compete in a race. Each boat finishing that race, and not thereafter retiring or being disqualified, will be scored according to the high point system as follows:

First	N
Second	N-1
Third	N-2
Fourth	N-3

Each place thereafter subtract 1 point

- 14.4 All other boats that compete in that race, including any that finish and thereafter retire or are disqualified, will score 0 points. Boats that do not compete in that race (DNC) will not be scored.
- 14.5 The series score for each boat will be a percentage calculated as follows: divide the sum of her 10 best race scores, by the sum of the points she would have scored if she had placed first in all of those races, multiplied by 100. Example: A boat's 10 best scores are:

N	7	6	8	4	10	10	6	7	5	8
Finish	3	1	5	3	2	3	3	2	3	6
Score	5	6	4	2	9	8	4	6	3	3



The Sum of her scores is 50. Divide 50 by what the sum of her scores would have been if she had finished first in all of those races or 71. This equals $.704 \times 100 = 70.4$. This is the series score for the example boat.

- 14.6 The qualified boat with the highest series score is the winner, and others are ranked accordingly.

15. SAFETY REGULATIONS

- 15.1 Boats shall attempt to check in with the Race committee by sailing past on the non-course side and hailing, or by communicating on VHF channel 72, prior to the warning signal.
- 15.2 Boats withdrawing from a race prior to finishing shall make every effort to ensure that the Race Committee is notified they have dropped out.
- 15.3 All competitors are required to conform to the U.S. Coast Guard regulations and the RRS concerning personal floatation devices and other required equipment.
- 15.4 Yachts shall not impede the passage of a non-racing vessel which is navigating within a channel which may be part of the course.
- 15.5 In accordance with Rule 42.3(h) providing no significant advantage is gained, a boat may employ propulsion using an engine or other method to remain clear of a non-racing vessel when required by Inland Rules.
- 15.6 The Race Committee will maintain a listening watch on Marine VHF Channel 72.

St. Augustine Yacht Club Attachment "A"

2016 Wednesday Night Race Courses for Non-Spin + Cruising

Short Course SS Light Southerly Winds

South from Day Mark 55
to Day Mark 57, to a buoy
set off Boating Club Road
& back to 55 (2.76 NM)

Non-Spin & Cruisers

1 Lap

Leave marks to port



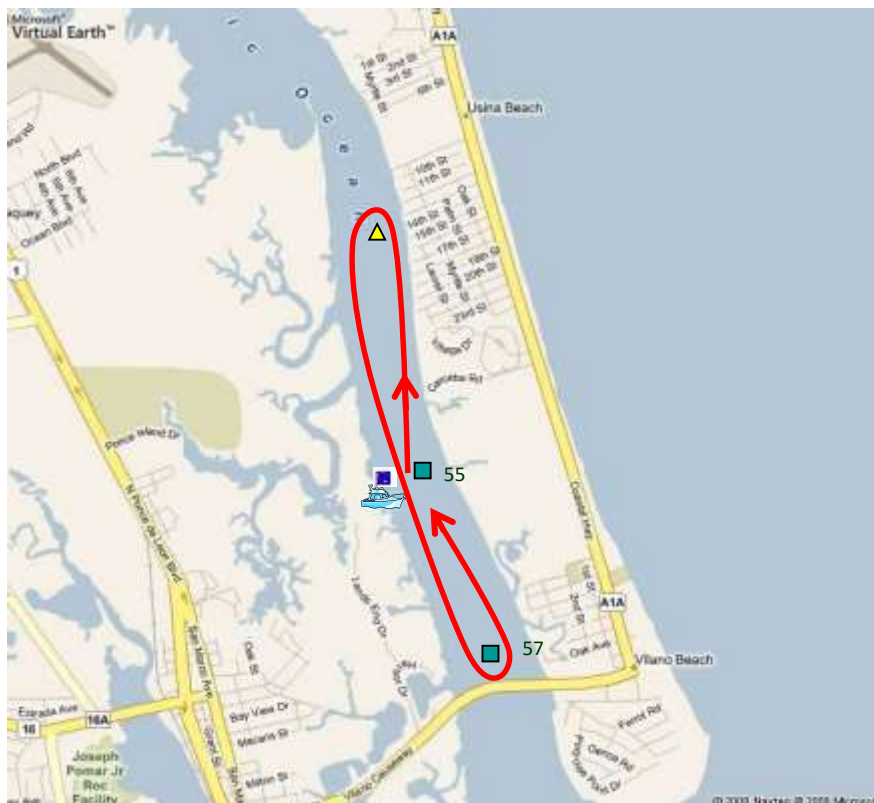
Short Course SN Light Northerly Winds

North from Day Mark 55
to a buoy set off Boating
Club Road, to Day Mark
57 & back to 55 (2.76 NM)

Non-Spin & Cruisers

1 Lap

Leave marks to port

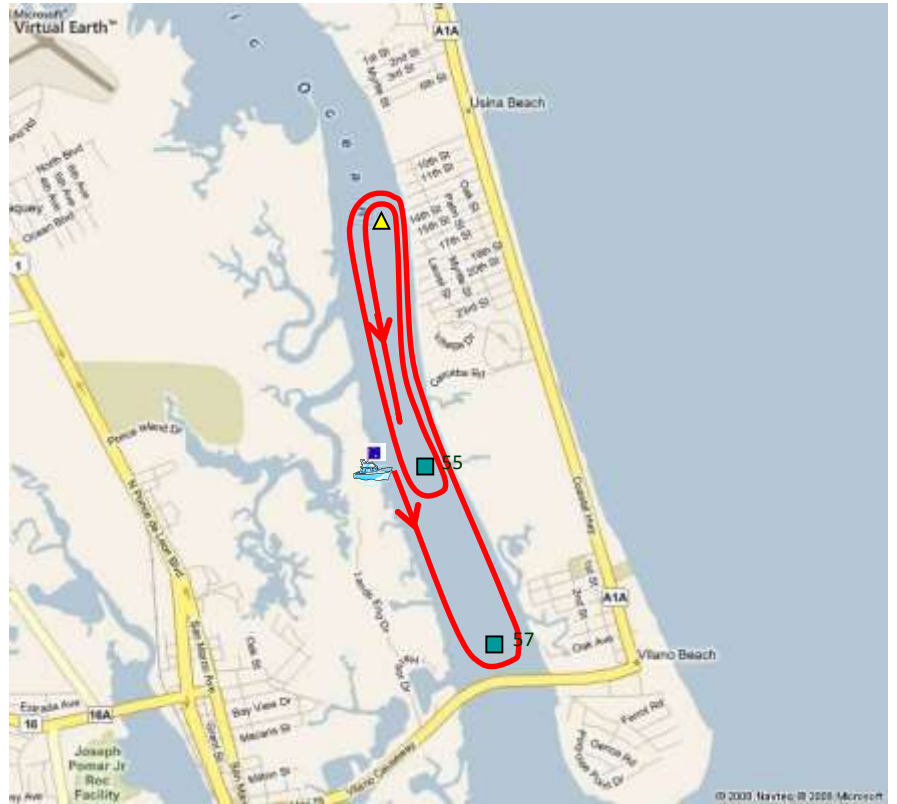


Long Course **LS**
Heavy Southerly Winds

South from Day Mark 55 to
Day Mark 57, to a buoy set
off Boating Club Rd, to 55,
back to BC Rd, to finish at
55.

Non-Spin & Cruisers

1 Lap + Extra Leg
55 to BC RD and back
(4.56 NM)



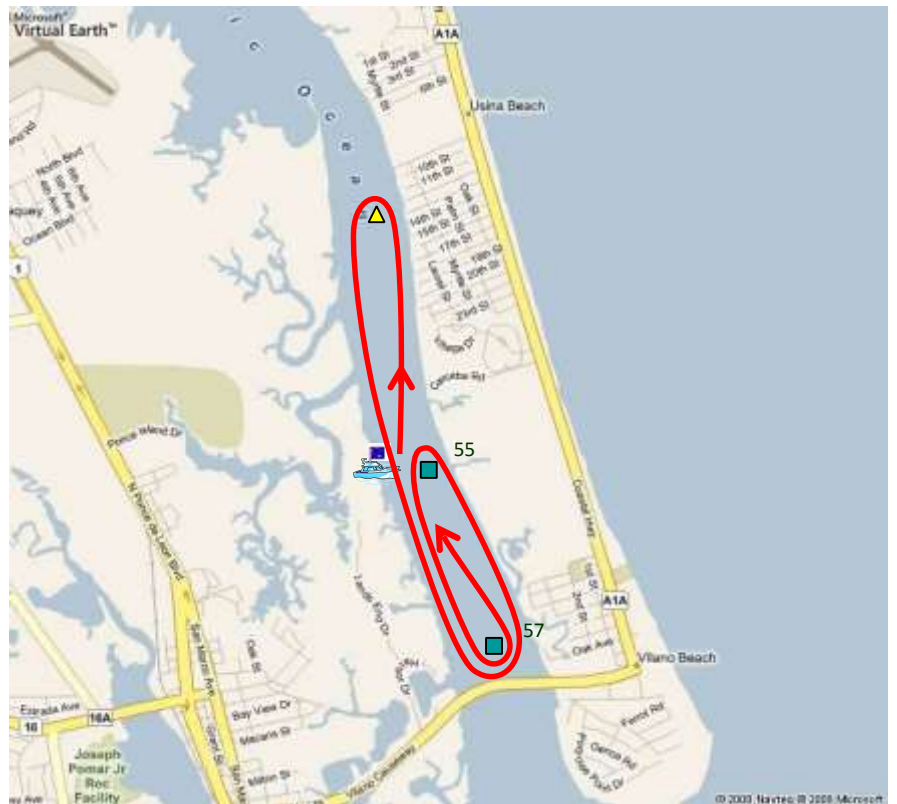
Long Course **LN**
Heavy Northerly Winds

North from Day Mark 55 to
a buoy set off Boating Club
Road, to Day Mark 57 to 55,
back to 57 and finish at 55.

Non-Spin & Cruisers

1 Lap + Extra Leg
55 to 57 and back
(3.72 NM)

Leave marks to port



St. Augustine Yacht Club Attachment “A”

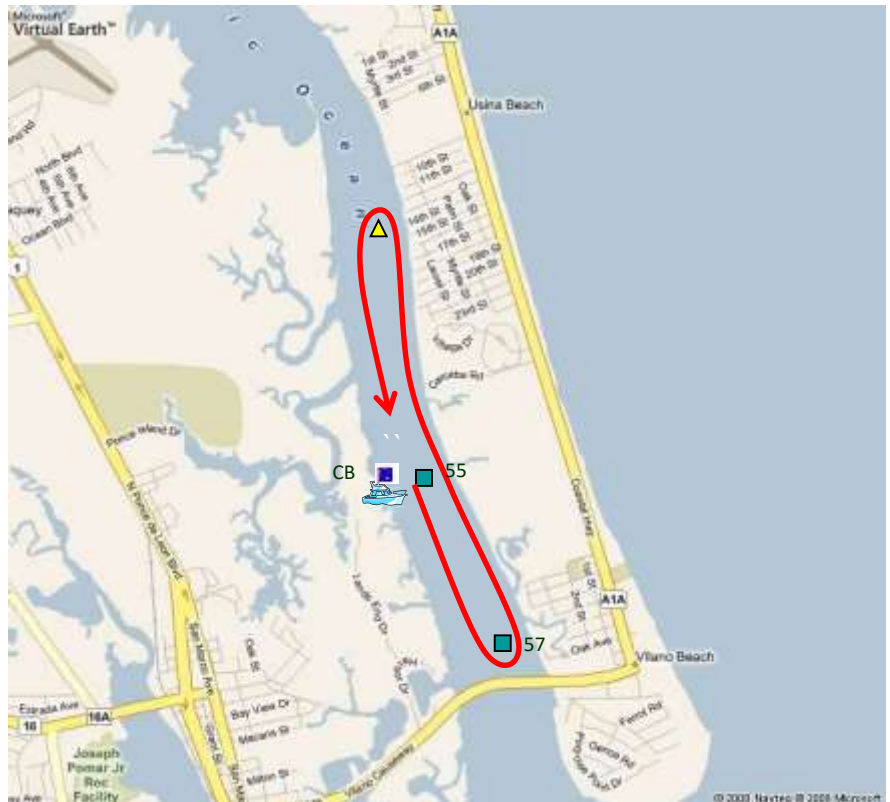
2016 Wednesday Night Race Courses for Spinnaker Class

Spinnaker Class South Start

South from Day Mark 55
to Day Mark 57, to a buoy
set off Boating Club Road
& back to 55 twice
Spinnaker Class
2 Laps (5.52 NM)

Leave marks to port

*The normal WNR course
for the Spinnaker class
will be 2 laps.*



Spinnaker Class North Start

North from Day Mark 55
to a buoy set off Boating
Club Road, to Day Mark
57 & back to 55 twice
Spinnaker Class
2 Laps (5.52NM)

Leave marks to port

*If conditions allow the
RC may announce an
extra or third lap for
Spinnaker class.*

