

NAVY DAY REGATTA

FCSA Fall Series # 3 of 6
Saturday, October 24, 2015
EPPING FOREST YACHT & COUNTRY CLUB

NOTICE OF RACE

1.0 RULES :

- 1.1 The Race will be governed by the current Racing Rules of Sailing (RRS) and the PHRF rules of the First Coast Sailing Association (FCSA). These may be altered by these Sailing Instructions. Epping Forest Yacht And County Club (EFY&CC) is the organizing authority for this Race/Regatta.

2.0 ELIGIBILITY AND ENTRY :

- 2.1 Boats must have a PHRF Rating to participate. Boats with a current PHRF Certificate issued by the First Coast Sailing Association (FCSA) as listed in the www.sailjax.com website will accumulate points towards the FCSA Annual Series Trophies.
- 2.2 All boats participating in the Spinnaker and Non-Spinnaker classes with LP measurements equal to or exceeding 130% of the base of the triangle (>130% of J) shall have sail numbers displayed on mainsails, spinnakers, and headsails. Boats in the Cruiser Class shall have sail numbers on the mainsails as a minimum.
- 2.3 Prior to racing, each yacht shall be properly registered by completing the Standard Race Entry Form found at www.sailjax.com and shall submit the proper fee during the race registration period.

3.0 CLASSES :

- 3.1 Boats must register in either the Spinnaker Class, the Non-Spinnaker Class, or the Cruiser Class.
- 3.2 The class entered must be declared on the Standard Race Entry Form before the close of registration.

4.0 SCHEDULE OF EVENTS :

- 4.1 The location for the event is at the Marnier's Deck at Epping Forest Yacht And Country Club.
- 4.2 Registration is 9:00 to 11:00 AM. Complementary pastries, coffee, etc. provided by EFY&CC.
- 4.3 Skippers Meeting at 12:00 Noon at the EFY&CC Mariner's Deck Flag Pole.
- 4.4 Warning signal for first start at approximately 12:55 PM.
- 4.5 Awards presentation with complementary food and beverage to follow the race. A cash bar is available.

5.0 ENTRY FEE/REGISTRATION :

- 5.1 Regatta entry fee is \$ 30.00 for EFYC Members and \$ 35.00 for Non EFYC Members. Payable to the EFY&CC.

6.0 SAILING INSTRUCTIONS :

- 6.1 Sailing instructions will be available on the www.sailjax.com website and copies will be available at registration.
- 6.2 Changes to the Sailing Instructions will be posted on the window outside the Mariner's Deck office.

7.0 RACE COURSE :

- 7.1 The race course will be announced at the Skippers meeting. The racing area will be on the St. Johns River as depicted on NOAA Chart 11492 between The Fuller Warren and Buckman Bridges.

8.0 SCORING THE RACE :

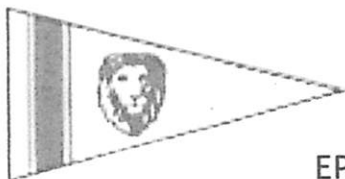
- 8.1 Classes will be scored using PHRF Time and Distance. The Low Point scoring system will apply per RRS Appendix A.

9.0 RACE PRISES :

- 9.1 First, second, and third place trophies will be awarded in each class at the post-race ceremonies at EFY&CC.

10.0 INFORMATION :

- 10.1 Contact is Allen Jones at Cell 904-321-7010 or allen.jones53774@gmail.com.



NAVY DAY REGATTA

FCSA Fall Series # 3 of 6

Saturday, October 24, 2015

EPHING FOREST YACHT & COUNTRY CLUB

SAILING INSTRUCTIONS

1.0 RULES :

- 1.1 The Race will be governed by the current Racing Rules of Sailing (RRS) and the PHRF rules of the First Coast Sailing Association (FCSA). These may be altered by these Sailing Instructions. Epping Forest Yacht And County Club (EFY&CC) is the organizing authority for this Race/Regatta.

2.0 ENTRIES :

- 2.1 See the Notice Of Race, Section 2.0.

3.0 SAFETY :

- 3.1 All competitors are required to comply with U.S. Coast Guard Regulations and the RRS Guidelines concerning vessel safety, personal flotation devices, and required equipment.
- 3.2 Boats shall not impede the passage of a vessel that can only navigate within a narrow channel or commercial fishing or vessels with restricted ability to maneuver.
- 3.3 The Race Committee will monitor VHF Channel 72.
- 3.4 Boats shall attempt to check in with the Race Committee Boat before the start of the first warning signal by passing behind the stern of the Committee Boat on the non-course side.
- 3.5 Boats withdrawing from the race prior to finishing shall make every effort to contact the Race Committee Boat of their intentions.

4.0 NOTICES TO COMPETITORS :

- 4.1 Notices to Competitors will be posted on the west window of the Mariner's Deck at EFY&CC.
- 4.2 The Race Committee will monitor VHF Channel 72 during the race.
- 4.3 The Race Committee will attempt to hail boats that are over the start line early via VHF Channel 72, however the race flags as shown in the Rules of Racing shall govern.

5.0 CHANGES IN THE SAILING INSTRUCTIONS :

- 5.1 Any changes to the Sailing Instructions shall be posted on the west window of the Mariner's Deck at EFY&CC.
- 5.2 Oral changes to the Sailing Instructions may be communicated from the committee boat while on the water prior to the first class warning signal. The "Come with-in Hail" Flag will be flown on the committee boat to signify communications.

6.0 RACE SCHEDULE

- 6.0 One race for each class is scheduled for Saturday, October 24, 2015.
- 6.2 The starting time for the first class will be approximately 1:00 PM.

7.0 CLASS FLAGS :

- 7.1 The Spinnaker Class Flag will be the T Flag.
- 7.2 The Non-Spinnaker Class Flag will be the B Flag.
- 7.3 The Cruiser Class Flag will be the Q Flag.

8.0 RACING AREA :

- 8.1 The racing area will be on the St. Johns River between the Fuller Warren and Buckman Bridges as depicted on NOAA Chart 11492.

9.0 THE COURSE :

- 9.1 The course(s) will be announced at the Skipper's Meeting.
- 9.2 The starting line will be closed except for boats starting or finishing.

10.0 MARKS :

- 10.1 One single race will be offered for each class. The course may be a combination of Navigation Marks on the River and marks set by the Race Committee.

11.0 START :

- 11.1 Two Starts are planned. The Spinnaker Class Boats will start first and the Cruiser Class Boats will start second. The Non-Spinnaker class, depending on the number of boats entered will be assigned to start with the first or second start. This may be changed at the Skippers Meeting depending on the total number of entrants.
- 11.2 The starting line will be between the orange flag on the Committee Boat and a yellow inflatable mark set to the left of the Committee Boat as boats approach the starting line.

12.0 STARTING SEQUENCE : (Similar for each class - Flags shall govern, horns are not official)

- 6.1 Three horn blasts (designating "get ready") approximately 1 minute before the warning signal of the starting class.
- 6.2 The Class Flag is raised with one horn blast as the warning signal designating the beginning of their five minute sequence.
- 6.3 Four minutes before their start the Preparatory Flag "P" will be raised with one horn blast.
- 6.4 One minute before their start the Preparatory Flag "P" will be lowered with one horn blast.
- 6.5 The Class Flag is lowered with one horn blast designating the start for that class.
- 6.6 The Race Committee will wait until all boats from the previous class have started, not more than 10 minutes, before sounding the "get ready" horn for the next start. Boats not starting within 10 minutes of their scheduled start shall be scored "Did Not Start" (DNS).

13.0 RECALLS :

- 13.1 individual recalls will be signaled in accordance with RRS 29.1 The Race Committee will attempt to hail the sail numbers of infringing yacht(s) by hailing and or radio on VHF 72. Failure to make or hear such a hail will not be grounds for redress nor relieve a yacht of her responsibility to start correctly.
- 13.3 General recalls will be signaled in accordance with RRS 29.2

14.0 FINISH :

- 14.1 The finish will be between the orange flag on the Committee Boat and a yellow inflatable set to the right of the Committee Boat relative to the final leg of the course. (The Committee Boat will not relocate for the finish)

15.0 TIME LIMIT :

- 15.1 The time limit for each class shall be 3 hours from the starting time of its class.
- 15.2 A boat failing to finish within 60 minutes in corrected time after the first boat in her class will be scored "Did Not Finish" without a hearing. This changes RRS Rule 35 and Rule A4.1.

16.0 PROTESTS :

- 16.1 Protests shall be filed with the Race Committee within one hour of the Race Committee Boat docking after racing.

17.0 SCORING :

- 17.1 Classes will be scored using the PHRF Time and Distance.
- 17.2 The Low Point scoring system of RRS, Appendix A will apply.

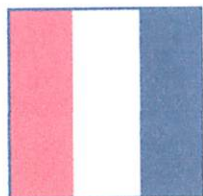
18.0 PRIZES :

- 18.1 First, second, and third place prizes will be awarded in each class at the post-race ceremony at the Mariner's Deck of EFY&CC.

19.0 INFORMATION :

- 19.1 Contact is Allen Jones at Cell 904-321-7010 or allen.jones53774@gmail.com.

CLASS SIGNAL FLAGS DESCRIPTION:



Spinnaker
Class "T"



Non-Spinnaker
Class "B"

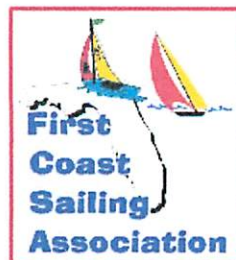


Cruiser
Class "Q"

FCSA's purpose is to handicap sailboats (PHRF), make up the annual schedule, sponsor an Interclub Regatta, and hold an Awards and General Meeting in January. FCSA's Board of Directors is made up of one volunteer from each of the eight member clubs.

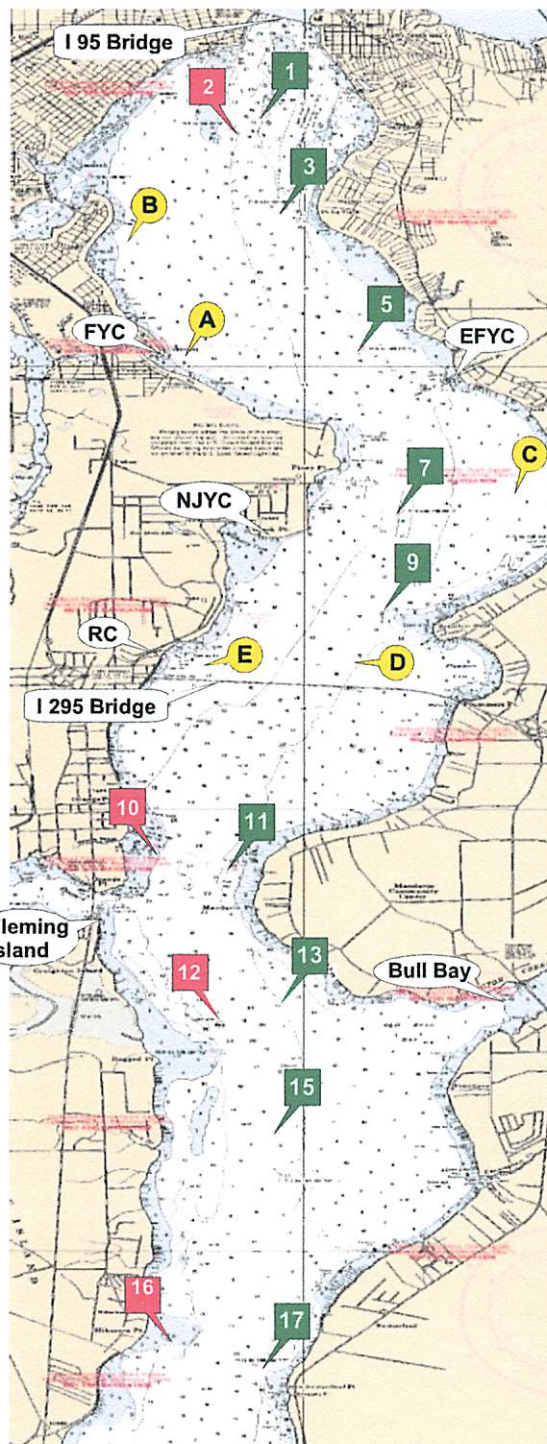
See a club handicapper to get a PHRF rating. New rating \$35, Renew by February 1st \$30, Change rating \$5.

The handicapping committee consists of one volunteer from each club and a volunteer Chief Handicapper. Requests for ratings are completed by a club handicapper and approved by the Chief Handicapper. Rating protests are submitted to the Chief Handicapper and voted on by the handicapping committee.



Distance nm

1 to 3	1.039
1 to 5	2.787
1 to 7	4.643
1 to A	2.793
1 to B	1.570
3 to 5	1.773
3 to 7	3.615
3 to 9	4.638
3 to A	1.829
3 to B	1.126
3 to C	3.763
5 to 7	1.863
5 to 9	2.926
5 to A	1.468
5 to B	2.299
5 to C	2.029
5 to D	3.486
7 to 9	1.095
7 to C	0.977
7 to D	1.697
7 to E	2.240
9 to C	1.726
9 to D	0.618
9 to E	1.486
A to B	1.523
A to C	3.140
B to C	4.303
C to D	2.328
C to E	3.111
D to E	1.127
11 to 13	2.317
11 to 15	3.400
11 to 17	5.631
11 to 17A	6.836
13 to 15	1.109
13 to 17	3.360
13 to 17A	4.575
13 to 18	5.585
15 to 17	2.252
15 to 17A	3.467
15 to 18	4.476
17 to 17A	1.216
17 to 18	2.225
17A to 18	1.010
18 to 20	2.038



From 2011 USCG Light List

Green 1
N 30° 17.813
W 81° 40.411

Red 2
N 30° 17.628
W 81° 40.635

Green 3
N 30° 16.780
W 81° 40.259

Green 5
N 30° 15.142
W 81° 39.466

Green 7
N 30° 13.305
W 81° 39.077

Green 9
N 30° 12.216
W 81° 39.237

Red 10
N 30° 09.513
W 81° 41.399

Green 11
N 30° 09.305
W 81° 40.794

Red 12
N 30° 07.240
W 81° 40.800

Green 13
N 30° 07.036
W 81° 40.224

Green 15
N 30° 05.926
W 81° 40.283

Red 16
N 30° 04.038
W 81° 41.254

Green 17
N 30° 03.671
W 81° 40.393

Green 17A
N 30° 02.457
W 81° 40.522

Red 18
N 30° 01.445
W 81° 40.551

Green 19
N 30° 01.335
W 81° 40.279

Red 20
N 29° 59.822
W 81° 39.126

FCSA offers three series of PHRF races: the Spring Series Trophy, the Fall Series Trophy, and the Offshore Trophy. When a rated sailboat is entered in a club race, noted as a FCSA points race, the boat is competing for a club trophy for that race and points toward the annual trophy for the series.

Rules for the annual trophies:

Spring and Fall Series Trophies:
6 races each, 1 throw-out race.

Offshore Series Trophies:
14 races, 7 throw-out races.

Note: There will be no throw out races in a series if less than four races are held due to cancellation or abandonment of races in that series.

Race scoring will be the low point system, 2012-2016 Racing Rules of Sailing, Appendix A, Rule A4.

Series scoring will be as follows:

DNF, RAF = # that started the race
DNS, DSQ = # that came to the start
DNC = # that attempted to race
DNE = # entered in the series + 1
Ties decided under Appendix A8.

Trophies divided by Spinnaker, Non-Spinnaker, and Cruising classes. All competitors must have a current FCSA PHRF rating and be a member of one of the seven FCSA member clubs.

Also From 2011 USCG Light List

Race Can "C"
N 30° 13.564
W 81° 37.989

Race Can "A"
N 30° 15.090
W 81° 41.160

Race Can "D"
N 30° 11.648
W 81° 39.522

Race Can "B"
N 30° 16.581
W 81° 41.539

Race Can "E"
N 30° 11.648
W 81° 40.822

(Check FCSA Website www.sailjax.com for contacts, addresses, phone numbers of club representatives)

EFYC - Epping Forest Yacht Club www.efyc.com
FYC - Florida Yacht Club www.thefloridayachtclub.org
NJYC - Navy Jax Yacht Club www.navyjaxyachtclub.com
RCJ - Rudder Club www.rudderclub.com

NFCC - North Florida Cruising Club www.nfccsail.com
SAYC - St Augustine Yacht Club www.staugustineyachtclub.com
HRYC - Halifax River Yacht Club www.hryc.com
SYC - Smyrna Yacht Club www.smyrnayachtclub.com