



St. Augustine Yacht Club
Founded 1873

2015 Wednesday Night Race Series

(updated 3/21/2015)

This year the St. Augustine Yacht Club will be hosting three series of Wednesday Night Races, with five races in each series. Races are open to anyone interested in fun and friendly competition on the water. Enclosed please find a Notice of Race, Race Instructions and a Registration Form for boats not already listed in the fleet.

Minor changes to instructions from the 2014 NOR/SI are noted in red.

The club will host a post-race happy hour at the club after each race. All racers and crew are welcome.

For more information please contact:

David Patrick
Rear Commodore of Sail
St Augustine Yacht Club

(904) 687-4197 (cell phone)

Email: sailing@StAugustineYachtClub.com



St. Augustine Yacht Club

Founded 1873

Wednesday Night Race – 2015 Notice of Race

1. Rules Races will be governed by The Racing Rules of Sailing (RRS); the prescriptions of the United States Sailing Association, and by these sailing instructions.

2. Eligibility All sailboats. Everyone should try to pre-register (fill out race form), but feel free to show up the night of a race and check in on channel 72. All boats should have a current PHRF rating issued by the First Coast Sailing Association. (See Sailjax.com for forms). Boats without a rating from FCSA will be issued a provisional rating by SAYC.

3. Schedule The race series will consist of three series of 5 races, scheduled as follows:

<u>March Series</u>	<u>Summer Series</u>	<u>Fall Series</u>
Race #1 Mar 18 (5:00 p.m.)	Race #1 May 27 (5:00 p.m.)	Race #1 Aug 12 (5:00 p.m.)
Race #2 Apr 1 (5:00 p.m.)	Race #2 June 10 (5:00 p.m.)	Race #2 Aug 26 (5:00 p.m.)
Race #3 Apr 15 (5:00 p.m.)	Race #3 June 24 (5:00 p.m.)	Race #3 Sept 9 (5:00 p.m.)
Race #4 Apr 29 (5:00 p.m.)	Race #4 July 15 (5:00 p.m.)	Race #4 Sept 23 (5:00 p.m.)
Race #5 May 13 (5:30 p.m.)	Race #5 July 29 (5:00 p.m.)	Race #5 Oct 7 (5:00 p.m.)

4. Registration Boats already in the fleet may register on the SAYC website (staugustineyachtclub.com). Boats not listed in the fleet on the SAYC website may register in advance by completing the attached Entry Form/Waiver and sending it to the address listed on the form.

5. Fees Entry Fee per boat for each series is **\$32.00 inc. tax** for SAYC members and **\$53.00 inc. tax** for non-SAYC members, due at the beginning of the series. Entry fee checks made out to the St. Augustine Yacht Club should be sent to St Augustine Yacht Club, 442 Ocean Vista Ave., St. Augustine, FL 32080. SAYC members may elect to charge the Entry Fee to their account.

6. Instructions See attached sailing instructions.

7. Fleets Boats register to race in one of two PHRF fleets: 'Cruising Fleet' (flying code flag 6, using the FCSA Spinnaker **OR** Non-spinnaker Rating) or 'Performance Fleet' (flying code flag 5, using the FCSA Adjusted Rating). *Performance Fleet boats may fly a spinnaker but must choose to do so at the start of each race and thus will use either FCSA Spinnaker Rating **OR** Non-Spinnaker Rating.*

Note: *Spinnakers may be flown in Cruising Fleet. 2014 changes to rules have been included in NOR/SIs.*

8. Scoring Boats will be scored for each race. The series winner will be the boat with the fewest total points after excluding the worst score. Points will be awarded using the Low Point System as follows:

First Place	1 pts
Second Place	2 pts
Third Place	3 pts
Etc.	

All non-finishers (DNS, DNF, DSQ) will be scored in accordance with Rule A9.

9. Prizes Trophies will be awarded for first, second and third for each race series in both fleets.



St. Augustine Yacht Club

Founded 1873

Wednesday Night Race - Sailing Instructions (March Series)

Boats will race in two PHRF fleets. The Cruising Fleet will consist largely of heavier displacement cruising type boats with higher PHRFs and/or less experienced crew, and use FCSA Ratings. *Cruisers will be able to use spinnakers but **must** declare so before the start of each **race** and hence they will use their lower PHRF rating for **that race**.* The Performance Fleet will generally include faster boats with lower PHRFs and/or more experienced crew, and will use the FCSA Rating. ***The faster Performance fleet will be required to sail the course twice, and the Cruising fleet once except in heavier airs when there will be an extra lap.*** Boats in the Performance Fleet can elect to fly a spinnaker but **must** declare so before the start of each **race** and hence will use their lower handicap for **that race**.

March Series Wednesday Night Races will be sailed on one of **four** inland courses. The course will be selected the day of the race depending on wind conditions. The races in all series (WNR 1, 2 & 3) will start at 5:00 pm for Performance Fleet and 10 minutes later for Cruising Fleet. All races will use the following start sequence. The timing of the start is determined by the removal of the class flags (time pieces and watches are relative). Sounds are secondary and may fail. The Race Committee can delay start times, combine fleets, or separate fleets at its discretion.

5 minutes before the start	Class Flags Raised	Performance= Code flag 5	Horn Sound
		Cruising= Code flag 6	
4 minutes before the start	Preparatory Signal	"P" Flag raised	Horn Sound
		(Blue with white square)	
1 minute before the start	"P" Flag Removed		Long Horn Sound
0 time The Start		Class Flags Removed	Horn Sound

All sailors must check in with the committee boat at least 15 minutes before the start on VHF channel 72 or by passing by the Committee boat and hailing. Election to fly a spinnaker in both Performance and Cruising classes must be announced prior to the start of each race. The race committee will monitor channel 72 and can provide race information up until the class flags are raised.

Short Courses A (light wind generally from a southerly direction) and B (light wind northerly) run north-south, beginning at Day Mark 55 north of the Vilano Beach Bridge on the ICW, to a mark set off Boating Club Road and Day Mark 57 and back to the start. In heavier airs, the Race Committee may elect to extend the courses by using Long Courses **C** or **D** for **Cruising Class ONLY** depending on wind direction. SEE diagrams of courses below.

Courses may be shortened if conditions require it. The 720 Degree Turn Rule will be in effect (rule 44.1 and 44.2).

The following flags may be flown by the committee boat:

Postponement:	rectangular pennant with red and white stripes
General Recall:	yellow pennant outlined in blue
Individual Recall:	white square with a blue cross
Shorten Course:	a white square with a blue square in its center
Come Within Hail:	Code Flag L, yellow and black squares

These races are intended to be a fun and friendly event, so protests are strongly discouraged. Varying boats with captains and crew of differing skill levels will be racing in close quarters so everyone is asked to be courteous and give spacing where needed. The Racing Rules of Sailing should be adhered to at all times.

St Augustine Yacht Club

2014 Wednesday Night Race Courses

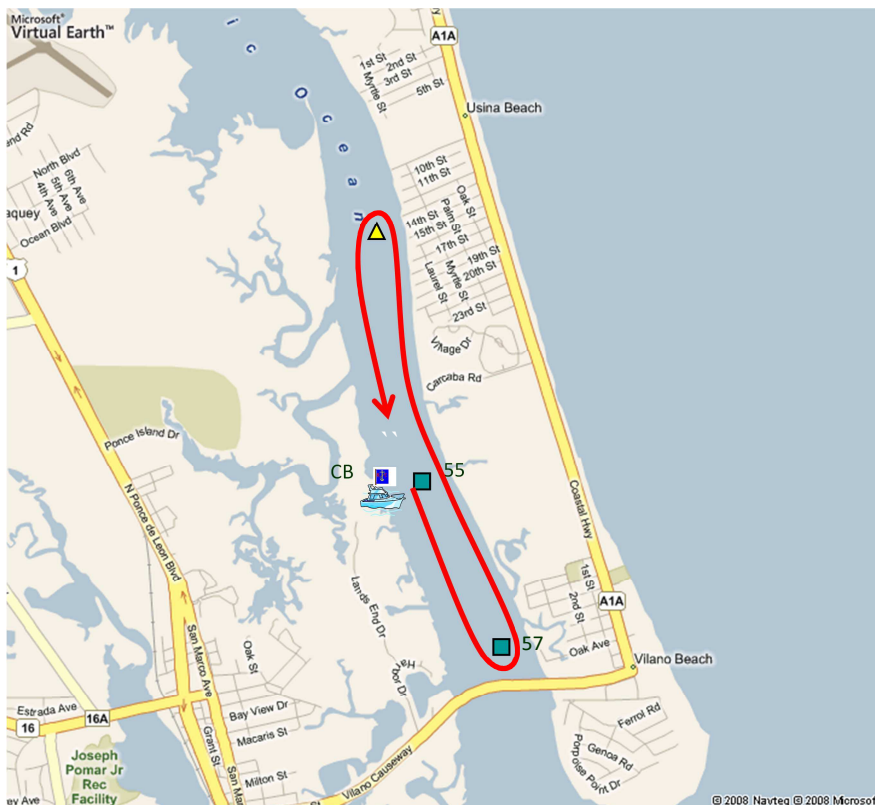
Short Course A Light Southerly Winds

South from Day Mark 55 to Day Mark 57, to a buoy set off Boating Club Road & back to 55 (2.76 NM)

Cruising 1 Lap
Performance 2 Laps

Leave marks to port

NOTE: Committee boat & 55 are not marks of the course except for the start and finish.



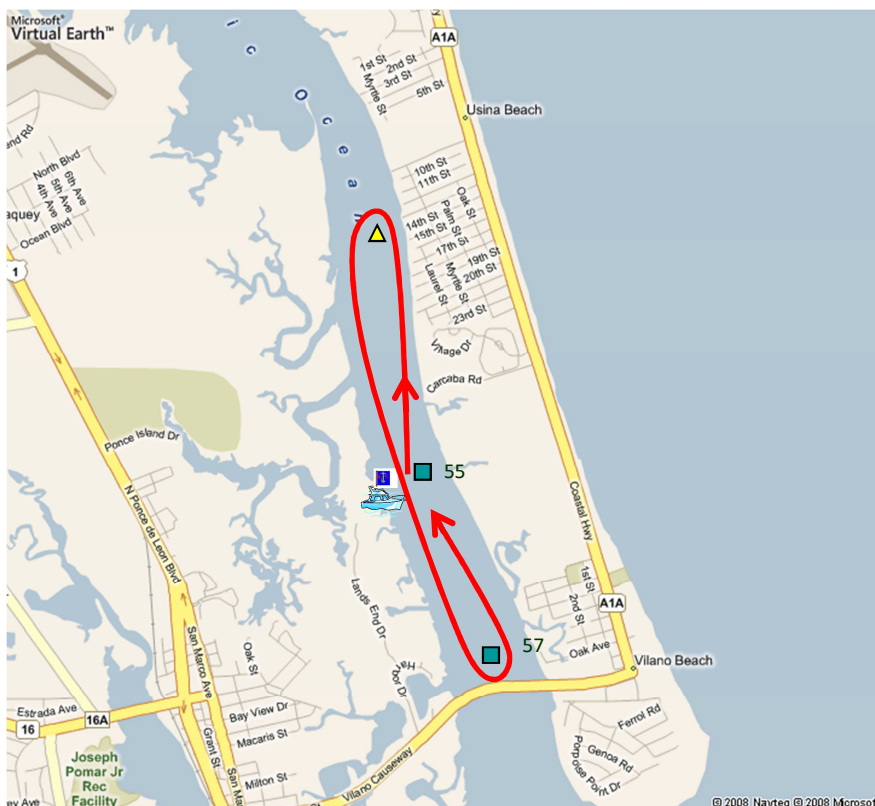
Short Course B Light Northerly Winds

North from Day Mark 55 to a buoy set off Boating Club Road, to Day Mark 57 & back to 55 (2.76 NM)

Cruising 1 Lap
Performance 2 Laps

Leave marks to port

NOTE: Committee boat & 55 are not marks of the course except for the start and finish.



St Augustine Yacht Club

2014 Wednesday Night Race Courses (continued)

Long Course C Heavy Southerly Winds

*CRUISING CLASS ONLY

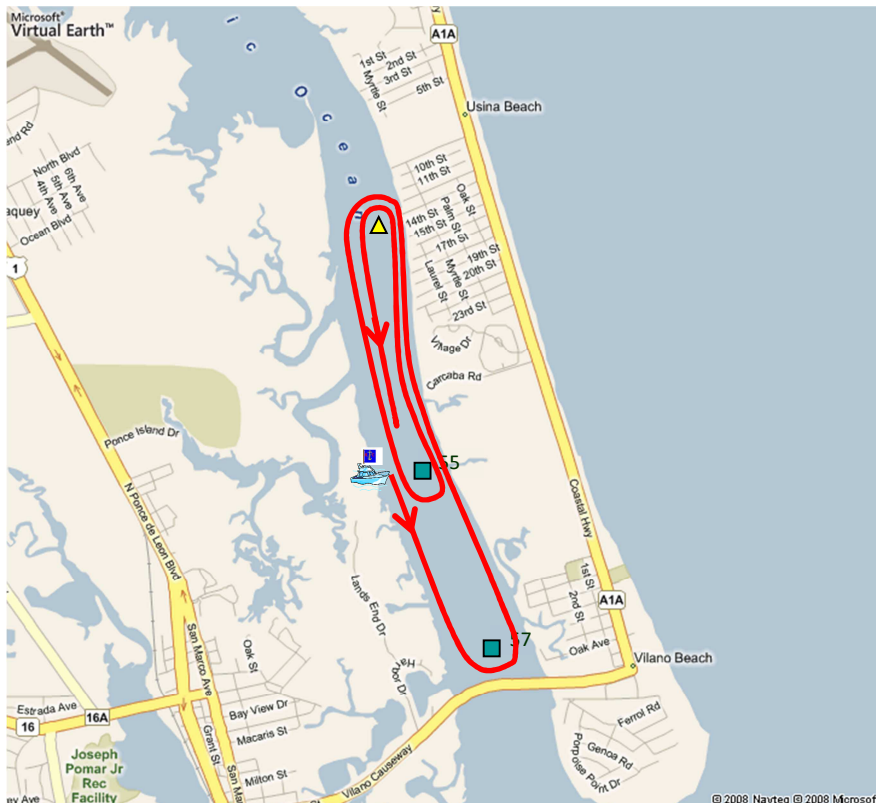
South from Day Mark 55 to Day Mark 57, to a buoy set off Boating Club Rd, to 55, back to BC Rd, to finish at 55.

Cruising 1 Lap + Extra legs
(4.56 NM)

Leave marks to port

NOTE:

1. Committee boat & 55 are not marks of the course except for the start and finish.
2. Extra Legs = 55 to BC Rd to 55



Long Course D Heavy Northerly Winds

*CRUISING CLASS ONLY

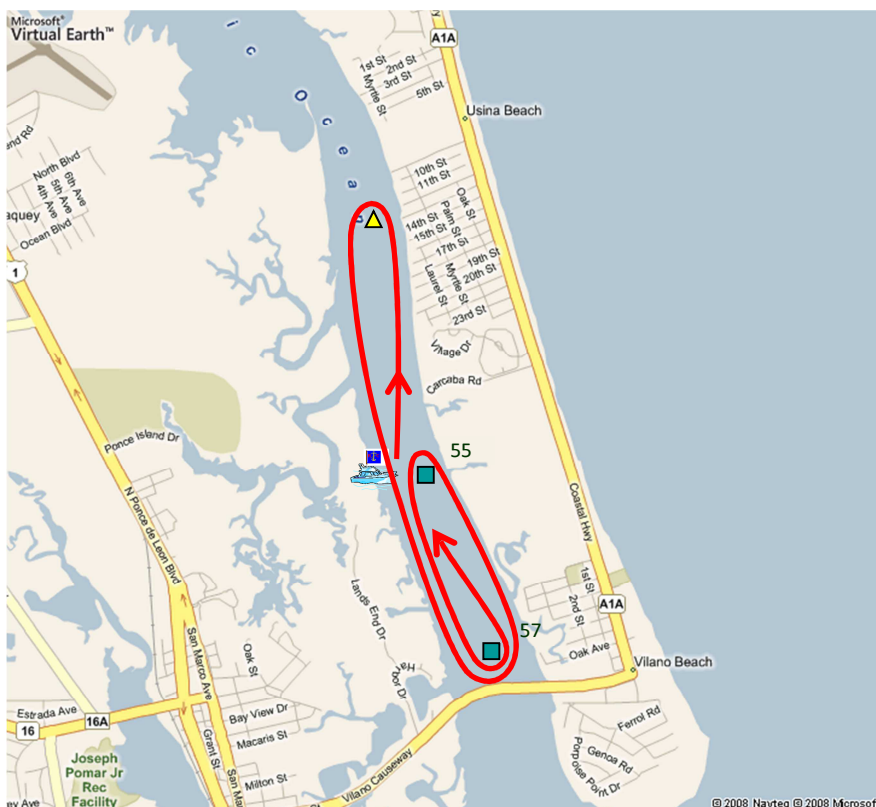
North from Day Mark 55 to a buoy set off Boating Club Road, to Day Mark 57 to 55, back to 57 and finish at 55.

Cruising 1 Lap + Extra Legs
(3.72 NM)

Leave marks to port

NOTE:

1. Committee boat & 55 are not marks of the course except for the start and finish.
2. Extra Legs = 55 to 57 to 55



**ST AUGUSTINE YACHT CLUB
YACHT RACING ENTRY FORM**

Spring

RACE: Wednesday Evening **Summer Series**
Fall

DATE: _____

YACHT NAME: _____

SAIL #: _____

YACHT MAKE/MODEL: _____ LENGTH: _____ COLOR: _____

PHRF RATING: _____ US SAILING MEMBER # _____

FLEET: _____ (CRUISER or PERFORMANCE)

OWNER'S NAME: _____ PHONE: _____

SKIPPER'S NAME: _____ PHONE: _____

CELL PHONE: _____ FAX: _____

EMAIL: _____

MAILING ADDRESS WITH ZIP: _____

EMERGENCY CONTACT: _____ PHONE: _____

VESSEL NORMALLY DOCKED AT: _____

The undersigned, for and on behalf of himself/herself, his/her guests, and the members of the crew of his/her yacht, hereby assumes all risk of accident and expressly agrees that the St. Augustine Yacht Club shall not be liable, under any circumstance, for any loss or injury to participants or others or the loss or damage to any yacht. The undersigned further agrees to indemnify and does hereby indemnify and hold the St. Augustine Yacht Club free and harmless under, from and against any and all losses, costs, damages, attorney's fees and liability of any kind or nature whatsoever growing out of or resulting from participation in any SAYC sponsored race.

SIGNED: _____ DATE: _____

Mail to: David Patrick
c/o St. Augustine Yacht Club
442 Ocean Vista Avenue
St. Augustine, Florida 32080