

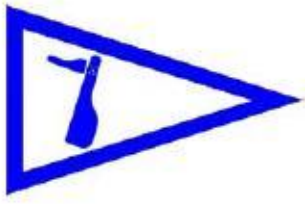
Frostbite Series 2011

The Rudder Club of Jacksonville

- #1, January 8th
- #2, January 22nd
- #3, February 5th
- #4, February 26th

NOTICE OF RACE

1. **RULES:** This series will be governed by the rules as defined in *The Racing Rules of Sailing*.
2. **ADVERTISING:** Advertising shall not be displayed
3. **ELIGIBILITY AND ENTRY:**
 - 3.1. The races are open to all boats of all classes.
 - 3.2. Eligible boats may enter by completing the First Coast Sailing Association standard entry form for yacht racing in person at the time of registration for each series race. Non Rudder Club member's entry fee is \$10.00.
 - 3.3. Anticipated classes are One Design, Portsmouth Mono-hull, and Portsmouth Multi-hull.
 - 3.4. A minimum of three registered boats is necessary to constitute a class.
4. **SCHEDULE:** Schedule of Events for each Posted Race Date:
 - 4.1. Registration: 1000 to 1100
 - 4.2. Competitors Meeting: 1100
 - 4.3. Warning Signal for First Class: 1155
 - 4.4. There will be a minimum of one race for the One Design classes; others to follow at the race committee's discretion.
5. **SAILING INSTRUCTIONS:** The Sailing Instructions are posted on the Rudder Club website and will also be available at registration.
6. **VENUE:** The racing area will be in the St. Johns River between the Buckman Bridge to the South and the Fuller Warren Bridge to the North.
7. **COURSE:** Course sailed will be as shown in an addendum to the Sailing Instructions and announced at the competitors meeting.
8. **SCORING:**
 - 8.1. A yacht's total score for the day's racing will be the sum of her score for all races on that day. One race is necessary to constitute a daily series.
 - 8.2. Scoring for the Frostbite series will be based on the US SAILING prescription for scoring a long series http://raceadmin.ussailing.org/Rules/Long_Series.htm. The HIGH-POINT PERCENTAGE SCORING SYSTEM will apply. The aggregate score for each day counts as one score for the series. In order to qualify a boat must have received a score in seventy five percent of scheduled series races.
9. **NOTICE TO COMPETITORS:** Notices to competitors will be posted on the Official Bulletin Board located on the Rudder Club's North exterior wall.
10. **PRIZES:** Prizes will be awarded after racing concludes on February 26nd.
11. **PARTICIPATION:** Sailing is an activity that has an inherent risk of damage and injury. Competitors in this series are participating entirely at their own risk. See RRS 4, Decision to Race. Completion and submission of a registration form for these races constitute an acceptance of and agreement to abide by the Racing Rules of Sailing, this Race Notice and the Sailing Instructions.
12. **FURTHER INFORMATION** For further information contact Dick Allsopp: 904-278-0329, dallsopp@ussailing.net; or the Rudder Club, 8533 Malaga Ave., Orange Park, FL 32073, 904-264-4094, office@rudderclub.com.








Frostbite Series 2011

The Rudder Club of Jacksonville

- #1, January 8th
- #2, January 22nd
- #3, February 5th
- #4, February 26th

SAILING INSTRUCTIONS

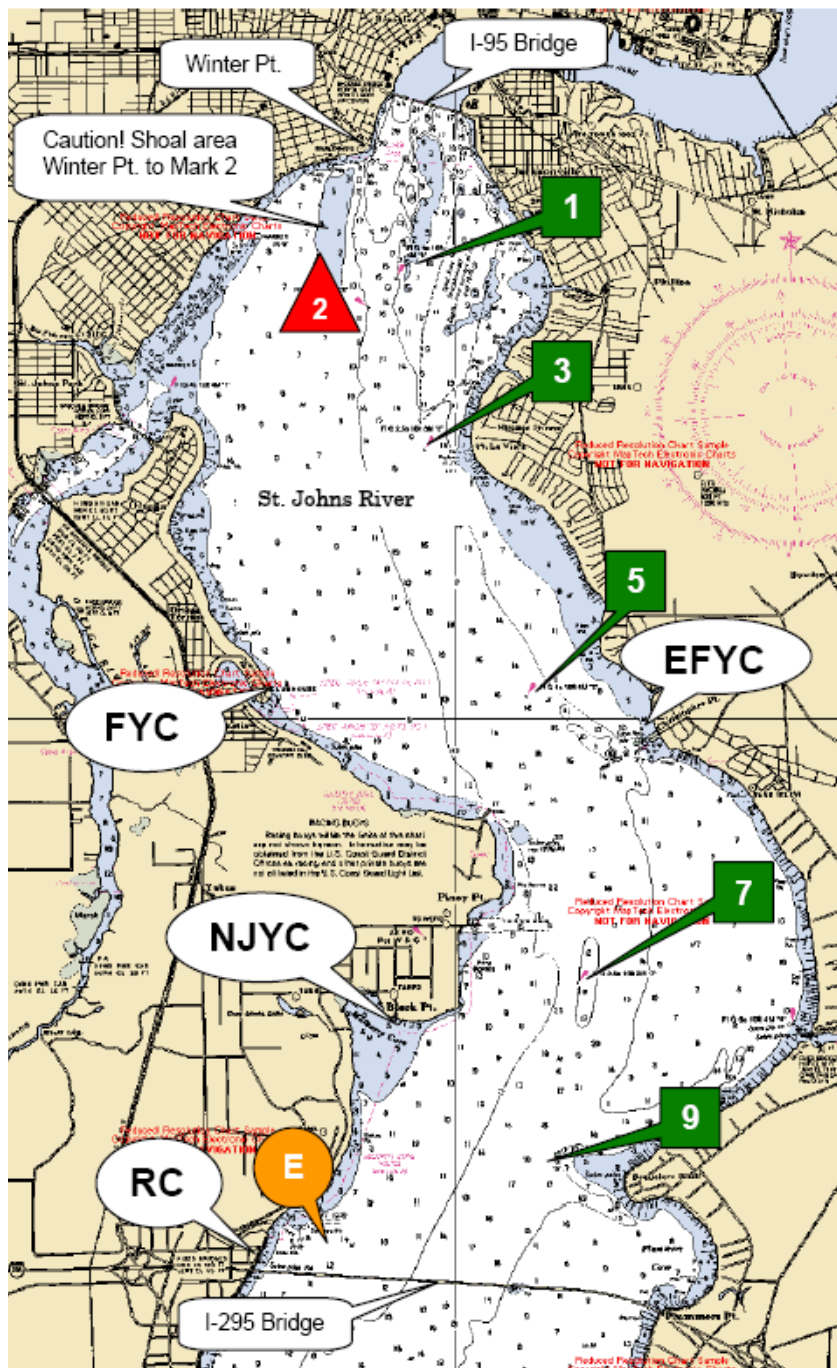
1. **RULES:** This series will be governed by the rules as defined in *The Racing Rules of Sailing*.
2. **NOTICE TO COMPETITORS:** Notices to competitors will be posted on the Official Bulletin Board located on the Rudder Club's North exterior wall.
3. **CHANGES IN THE SAILING INSTRUCTIONS:** Any changes to the Sailing Instructions will be posted on the Official Bulletin Board located on the Rudder Club's North exterior wall no later than 1045 on the day of the race
4. **SIGNALS MADE ASHORE:**
 - 4.1 Signals made ashore will be displayed from the flag pole located on the North side of the Rudder Club.
 - 4.2 The warning signal for the first class will be made not less than 30 minutes after Code Flag AP is lowered.
5. **SCHEDULE:** Schedule of Events for each Posted Race Date:
 - 5.1. Registration: 1000 to 1100
 - 5.2. Competitors Meeting: 1100
 - 5.3. Warning Signal for First Class: 1155
 - 5.4. There will be a minimum of one race for the One Design classes; others to follow at the race committee's discretion.
6. **CLASS FLAGS:**

| | | |
|------------------|----|---|
| Portsmouth Multi | P1 |  |
| Portsmouth Mono | P2 |  |
| Flying Scot | P3 |  |
| Snipe | P4 |  |
| Spare | P5 |  |
7. **COURSES:**
 - 7.1. One Design. Courses for each class will be as shown in an addendum A or B and announced at the competitors meeting.
 - 7.2. If the Race Committee sets a gate instead of a Leeward Mark, boats shall sail between marks forming the gate from the direction of the last mark and round either the port mark leaving it to port or the starboard mark leaving it to starboard.
8. **MARKS:** Marks may be either government navigation marks as depicted on NOAA Chart 11492 or yellow or orange cylinders. Government marks will be designated by their number as appearing on the chart. An inflatable mark may be set to windward and designated "X" (XRAY).
9. **START:** The starting line will be between an orange flag flown on the Race Committee Boat and a mark set to the left side of the Committee Boat relative to the first course.
10. **FINISH:** The finish line will be between an orange flag on the committee boat and the right side of the Committee Boat relative to the final leg. If multiple classes are participating, the finish line will be between an orange flag on the committee boat and the left side of Committee Boat relative to the final leg (to accommodate starts for One Design classes.)
11. **TIME LIMIT:** The time limit for the first yacht in each starting class to finish is 90 minutes from her start. Yachts failing to finish within 30 minutes (corrected time as applicable) after the first yacht in her class will be scored "DNF." This changes Rule 35 and A4.1.
12. **PARTICIPATION:** Sailing is an activity that has an inherent risk of damage and injury. Competitors in this series are participating entirely at their own risk. See RRS 4, Decision to Race. Completion and submission of a registration form for these races constitute an acceptance of and agreement to abide by the Racing Rules of Sailing, this Race Notice and the Sailing Instructions.

Courses

| | | | |
|---|---|--|---|
| | | | |
| <p>WS</p> <p>Start -A- BP or BS - A - Finish</p> | <p>TS</p> <p>Start - A - C - BS - A - Finish</p> | <p>WD</p> <p>Start - DA - BP or BS - DA - Finish Long Course</p> | <p>TD</p> <p>Start - DA - DC - BS - DA - Finish Long Course</p> |
| | <p>Note: On the diagram a mark with an “X” through it indicates it is not a mark of the course</p> | <p>Note: On the diagram a mark with an “X” through it indicates it is not a mark of the course.</p> | <p>Note: On the diagram a mark with an “X” through it indicates it is not a mark of the course</p> |

Note: An offset mark may be placed near the windward mark. The offset mark is a mark of the course and rounded accordingly.



Race Marks
GPS Position

Range and Bearing between I

| | From | To | Range n.m. | Beari Mag. |
|---|------|----|---------------|---------------|
| 1 | | | | |
| | E | 7 | 2.3 | 048° |
| 3 | | | | |
| | E | 9 | 1.5 | 073° |
| 5 | | | | |
| | 1 | 3 | 1.1 | 175° |
| 7 | | | | |
| | 1 | 5 | 2.8 | 168° |
| 9 | | | | |
| | 3 | 1 | 1.1 | 355° |
| E | | | | |
| | 3 | 5 | 1.7 | 163° |
| E | | | | |
| | 3 | 7 | 3.7 | 169° |
| E | | | | |
| | 5 | 1 | 2.8 | 348° |
| E | | | | |
| | 5 | 3 | 1.7 | 343° |
| E | | | | |
| | 5 | 7 | 1.9 | 175° |
| E | | | | |
| | 5 | 9 | 2.9 | 181° |
| E | | | | |
| | 7 | E | 2.3 | 229° |
| E | | | | |
| | 7 | 1 | 4.6 | 350° |
| E | | | | |
| | 7 | 3 | 3.6 | 349° |
| E | | | | |
| | 7 | 5 | 1.9 | 355° |
| E | | | | |
| | 7 | 9 | 1.1 | 193° |
| E | | | | |
| | 9 | E | 1.5 | 253° |
| E | | | | |
| | 9 | 5 | 2.9 | 001° |
| E | | | | |
| | 9 | 7 | 1.1 | 013° |