

THE GATOR BOWL REGATTA

5 - 6 December 2009
The Rudder Club of Jacksonville
8533 Malaga Avenue
Orange Park, FL 32073, USA

Notice of Race

1 RULES

- 1.1 The regatta will be governed by *The Racing Rules of Sailing* (RRS), the prescriptions of US SAILING, the rules of participating classes, and by the rules of the First Coast Sailing Association.
- 1.2 Racing Rule 77 is changed as follows: Except for boats racing in PHRF Flying Scot and Snipe classes, all boats shall display on the main sail unique identification numbers. These numbers shall be in addition to class insignia and manufacturer's model number.

2 ALTERATIONS OF CLASS RULES

The rules of all classes with boats participating as a class are altered so that membership in the class is not required. Flying Scots need to be FSSA members to be scored in the District series. Boats participating in a PHRF event must be members of the First Coast Sailing Association.

3 ADVERTISING

Advertising will be restricted to Category A.

4 ELIGIBILITY AND ENTRY:

- 4.1 Eligible boats are those who have officially entered by completing a registration form on-line or during the registration period as set forth in this Notice of Race. On-line registration will be on the [US SAILING Regatta Network](#).
- 4.2 It is anticipated that yachts will be divided into the following racing classes: "A" Class Catamaran, Flying Scot, Hobie 18, Hobie 16, Snipe, 420's, Laser, Portsmouth mono-hull, Portsmouth multi-hull, Multihull Long Distance (Portsmouth) and PHRF classes. Additional classes may be accommodated provided the minimum requirement of Rule 4.3 is met.

- 4.3 A minimum of three registered boats is necessary to constitute a class.
- 4.4 PHRF class boats are required to have a current PHRF rating certificate issued by the First Coast Sailing Association.

5 SCHEDULE OF EVENTS

- 5.1 **SATURDAY 5 December** - One design, and Portsmouth classes.

Late Registration: 0930-1045
Competitor's meeting: 1100. Optional for those entries that have in their possession a copy of the sailing instructions and have registered on-line prior to 1 December.
Warning signal for first class: 1155
Dinner - After racing

- 5.2 **SUNDAY 7 December** - PHRF, Multihull Long Distance, One design and Portsmouth classes.

Warning signal for first one design class 0955
PHRF Late Registration: 1000 - 1115
Competitor's (Cruisers) meeting: 1130. The competitors meeting is optional for those entries that have in their possession a copy of the sailing instructions and have registered on-line prior to 1 December.

Warning signal for cruiser classes and multihull long distance race: 1255.
Food and refreshments are available for all participants following racing.

*Note - No one design starting sequence will be commenced after 1230.

6 REGISTRATION

- 6.1 Boats are encouraged to register in advance on the US SAILING Regatta Network at https://www.regattanetwork.com/clubmgmt/applet_registration_form.php?regatta_id=2495.
- 6.2 Boats that have not registered in advance

will be given an opportunity to register on-line or with paper forms during the registration periods on Saturday and Sunday.

- 6.3 A list of entries may be viewed at http://http://www.regattanetwork.com/clubmgmt/applet_registrant_list.php?regatta_id=2495&custom_report_id=2

7 FEES

- 7.1 The Entry Fee for one design classes is \$40.00. This includes a \$30.00 race registration fee and one \$10.00 dinner ticket.
- 7.2 The Entry Fee for PHRF and Multihull Long Distance Racers is \$30.00 which includes a \$30.00 race registration fee.
- 7.3 There will be a \$5.00 processing fee for all registrations processed during late registration including Rudder Club entries.
- 7.4 Additional Saturday Night Dinner Tickets may be purchased for \$10.00 respectively. The Race Registration fee will be discounted for Rudder Club members in accordance with Rudder Club By-laws. Multihulls who have entered as a one design class for the Saturday Race will not be charged an additional entry fee for the Multihull Long Distance Race on Sunday.

8 SAILING INSTRUCTIONS

Changes to this notice or the Sailing Instructions will be posted on the exterior bulletin board prior to 1000 on the morning of each race. Subsequent changes will be made in the form of a Notice to Competitors. Schedule changes will be posted prior to 1900 (7:00 PM) on the day prior to the race. This notice, sailing instructions, and changes thereto will also be available on the Rudder Club Web Site at <http://www.rudderclub.com/gator.html> .

9 REGATTA SITE

The regatta site will be the Rudder Club of Jacksonville Inc.

10 RACING AREA

The racing area will be in the St. Johns River as depicted on NOAA Chart 11492 between the Buckman Bridge to the south and the Fuller Warren Bridge to the north

11 COURSES

Courses will be as shown in an addendum to the Sailing Instructions and on the [Rudder Club Web Site](#). Course to be sailed will be displayed from a white board on the Race Committee Boat.

12 SCORING

One race is necessary to constitute a series. When fewer than 6 races have been completed a boat's series score will be the total of her race scores. When six or more races have been completed, a boat's score will be the total of all her scores excluding her worst score.

13 PRIZES

First, second, and third place prizes will be awarded in classes of more than five finishing boats. First and second place prizes will be awarded in classes of four to five finishing boats. A first place prize will be awarded in classes of three or less finishing boats. Trophies will be awarded following racing on Sunday 6 December 2009.

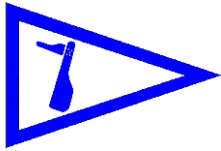
14 PARTICIPATION

Sailing is an activity that has an inherent risk of damage and injury. Competitors in this event are participating entirely at their own risk. See RRS 4, Decision to Race. The race organizers (organizing authority, race committee, protest committee, host club, sponsors, or any other organization or official) will not be responsible for damage to any boat or other property or the injury to any competitor, including death, sustained as a result of participation in this event.

15 FURTHER INFORMATION

For further information, please contact:

Regatta Chairman Dick Allsopp
3385 Sequoia Rd.
Orange Park, FL
904-278-0329
dallsopp@ussailing.net



THE GATOR BOWL REGATTA

CRUISER CLASS and DISTANCE RACE

SAILING INSTRUCTIONS

6 December 2009

The Rudder Club of Jacksonville

8533 Malaga Avenue

Orange Park, FL 32073, USA

1 RULES

- 1.1 The regatta will be governed by the rules as defined in the current *Racing Rules of Sailing* (RRS), the rules of the First Coast Sailing Association, and by these Sailing Instructions.
- 1.2 US SAILING Prescriptions will apply.
- 1.3 Rules 35 and A4.1 of the RRS are changed by SI 13.

2 NOTICES TO COMPETITORS

Official notices to competitors will be posted on the notice board located on the north exterior wall of the Rudder Club. Notices may also be published on the Rudder Club Web Site at <http://www.rudderclub.com>.

3 CHANGES IN THE SAILING INSTRUCTIONS

Any change in the Sailing Instructions will be posted on the Official Bulletin Board on the Rudder Club north wall and on the Web Site. Changes after 0900 6 December will be in the form of a Notice to Competitors except that any change to the schedule of races will be posted by 2000 on the day before it will take effect..

4 SIGNALS MADE ASHORE

- 4.1 Signals made ashore will be displayed from the flag pole located on the north side of the Rudder Club.
- 4.2 Code Flag "AP", Answering Pennant, displayed ashore with two sound signals (one when lowered) means "The race is postponed" The warning signal will be made not less than 45 minutes after "AP" is lowered.

5 SCHEDULE OF RACES

- 5.1 One race is scheduled.
- 5.2 Class divisions shall be posted on the Official Bulletin Board.
- 5.3 Schedule:

SUNDAY 6 December - PHRF, One design multihull and Portsmouth classes.

1000-1115: Cruiser Registration.

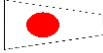





1130 : Competitors Meeting (Optional for boats who have pre-registered and have a copy of these Sailing Instructions)

1255: First Warning Signal

Note: Multihull, one design and Portsmouth classes sailing the distance race on Sunday will sail in accordance with these Sailing Instructions.

6 CLASS FLAGS

Class flags will be the International Numeral Pennants as depicted under Race Signals in the RRS

Class	Pennant	
Multihull Open	P1	
Spare	P2	
Spare	P3	
PHRF Spinnaker	P4	
PHRF Non-spinnaker	P5	
PHRF Cruiser	P6	

7 RACING AREA

The racing area will be in the St. Johns River between the Buckman Bridge to the south and the Fuller Warren Bridge to the north as depicted on NOAA Chart 11492.

8 THE COURSE

8.1 Race course for Cruiser Classes and multihull distance classes will be displayed from a course board on the committee boat.

9. MARKS

9.1 Marks may be either government navigation marks as depicted on NOAA Chart 11492 (as corrected by Notices to Mariners), FCSA Race Marks or inflatable marks. Government marks will be designated by their number as appearing on the chart. FCSA marks will be designated by their Alphabetic designator. An orange cylinder set to windward of the starting line as a windward mark will be designated "W", WHISKEY. Approximate positions of government and FCSA marks are shown in Appendix A.

9.2 A limiting mark may be set to protect the committee boat close to her and on the same end of the starting line. No yacht shall pass between the limiting mark and the committee boat. (This limiting mark is not a mark of the course.)

10 START

10.1 The Starting Line will be a line between an orange flag flown on the Race Committee/Signal Boat and a mark set toward the left side of the course from the Committee Boat.

10.2 Boats whose warning signal has not been made shall remain clear of the starting area.

11 CHANGE OF COURSE AFTER THE START

To change the position of the next mark, the race committee will move the original mark (or the finishing line) to a new position. The change will be signaled before the leading boat has begun the leg, although the mark may not yet be in the new position. Any mark to be rounded after rounding the moved mark may be relocated without further signaling to maintain the course configuration..

12 THE FINISH

The Finish Line will be between an orange flag flown on the Race Committee/Signal and a mark set from the orange flag perpendicular to the course relative to the final leg of the course.

13 TIME LIMIT

The time limit shall be 3 hours for each class. Yachts failing to finish within 45 minutes corrected time after the first yacht of their class finishes will be scored "Did not Finish." This changes rule 35 and rule A41.

14 PROTESTS AND REQUESTS FOR REDRESS

14.1 Protests shall be written on forms available at the Rudder Club. They shall be filed with the Regatta Chairman. Protest time will end 90 minutes after the last boat has finished the last race of the day. Protests will be heard in the approximate order received.

14.2 Protest notices will be posted on the Official Bulletin Board within 30 minutes following the protest time limit.

15 SAFETY

15.1 Boats shall attempt to check in with the Race Committee by sailing past on the non-course side prior to their class Warning Signal.

15.2 Boats withdrawing from a race prior to finishing shall make every effort to ensure that Race Committee is notified that they have dropped out

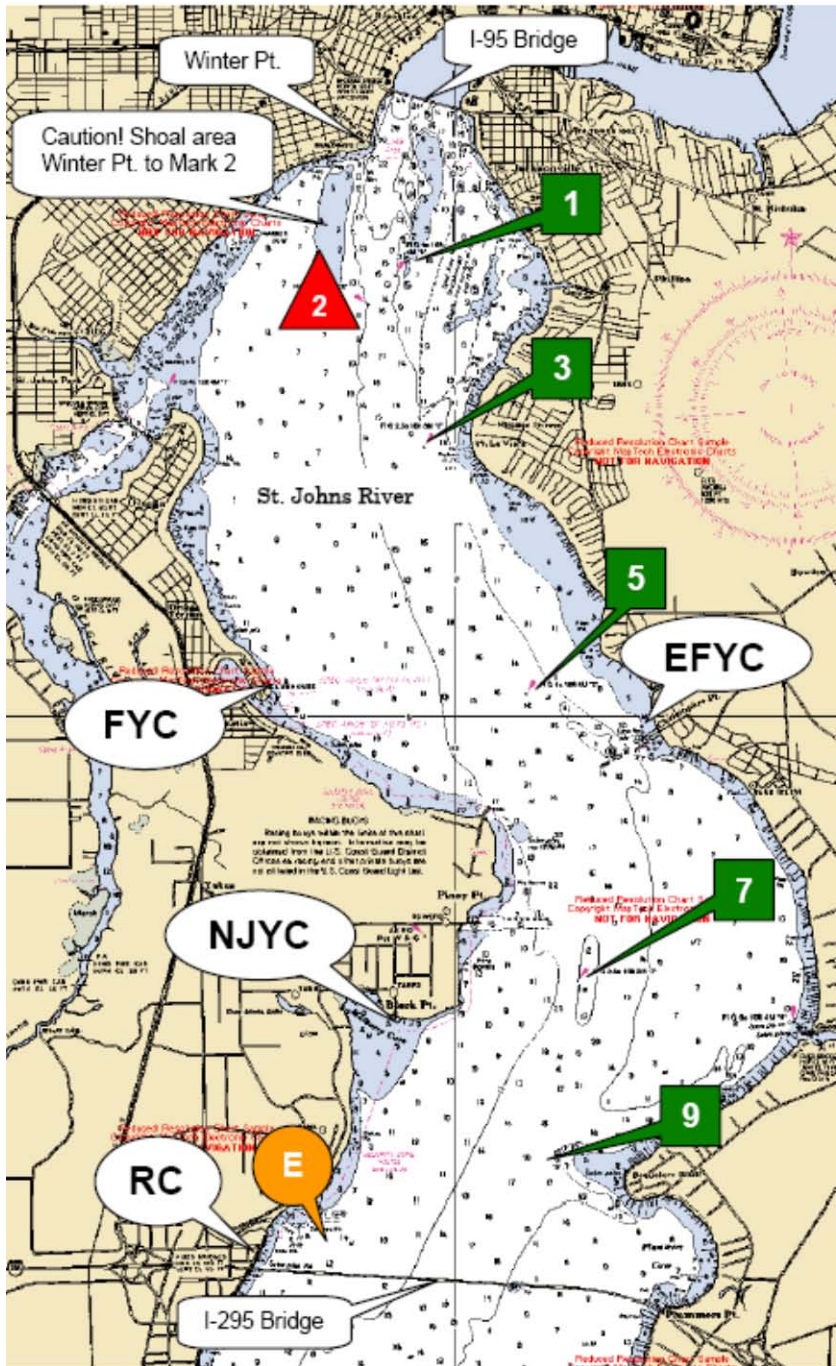
15.3 Boats shall not impede the passage of a vessel which can safely navigate only within a narrow channel, and give way to commercial fishing vessels while fishing or vessels with restricted ability to maneuver.

16 SCORING

The Low Point Scoring System of appendix A will apply. Cruisers will be scored by PHRF Time on Distance and multihull open classes will be scored in accordance with the Portsmouth Yardstick (HC). One race must be completed to constitute a series.

17 PRIZES

Results will be announced at the Rudder Club following the race. First, second, and third place prizes will be awarded for each class.



Race Marks
GPS Position

Range and Bearing between I

1

N30° 17.798'
W81° 40.440'

From	To	Range n.m.	Beari Mag.
E	7	2.3	048°
E	9	1.5	073°

3

N30° 16.723'
W81° 40.219'

1	3	1.1	175°
1	5	2.8	168°

5

N30° 15.013'
W81° 39.470'

3	1	1.1	355°
3	5	1.7	163°
3	7	3.7	169°

7

N30° 13.312'
W81° 39.078'

5	1	2.8	348°
5	3	1.7	343°
5	7	1.9	175°
5	9	2.9	181°

9

N30° 12.272'
W81° 39.241'

7	E	2.3	229°
7	1	4.6	350°
7	3	3.6	349°
7	5	1.9	355°
7	9	1.1	193°

E

N30° 11.700'
W81° 40.900'

9	E	1.5	253°
9	5	2.9	001°
9	7	1.1	013°