



THE MOONLIGHT REGATTA

19 July 2008

The Rudder Club of Jacksonville

8533 Malaga Avenue
Orange Park, FL 32073

Notice of Race

1. RULES

The regatta will be governed by *The Racing Rules of Sailing* (RRS), the prescriptions of the US SAILING and the PHRF rules of the First Coast Sailing Association .

2. ADVERTISING

Advertising will be restricted to Category A.

3. ELIGIBILITY AND ENTRY

Eligible yachts are those who have officially entered by completing a registration form with the Rudder Club, and hold a PHRF rating issued by the First Coast Sailing Association.

4. FEES

The entry fee is \$25. A \$5 discount applies to members of US Sailing. Rudder Club member entry-fee provisions apply.

5. SAILING INSTRUCTIONS

Sailing Instructions will be available at the Rudder Club by 0900 on 19 July and on the Rudder Club Web Site at www.rudderclub.com.

6. SCHEDULE

Registration 1800 - 1845
Sailors Meeting 1900
Warning signal for first class: 1955.

7. VENUE

7.1 The venue for the race will be The Rudder Club of Jacksonville 8533 Malaga Avenue, Orange Park FL 32073

7.2 The racing area will be in the St. Johns River

between the Buckman Bridge to the south and the Fuller Warren Bridge to the north as depicted on NOAA Chart 11492.

8. THE COURSES

Race courses will be announced at the sailor's meeting.

9. SAFETY

All competing yachts shall be equipped with functional navigation lights which comply with the Inland Navigation Rules. Lights shall be displayed at all times between the hours of sunset (2028) and sunrise (0638). Spreader and foredeck lights are allowed. The moon will be one day past "full" (89% illumination) and will rise at 2131.

10. DISCLAIMER OF LIABILITY

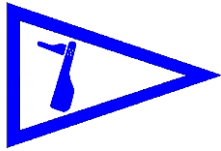
Competitors participate in the regatta entirely at their own risk. See rule 4, Decision to Race. The organizing authority will not accept any liability for material damage or personal injury or death sustained in conjunction with or prior to, during, or after the regatta.

11. INSURANCE

Each participating boat shall be insured with valid third-party liability insurance.

12. PRIZES

Results will be announced at the Rudder Club following the race. First, second, and third place prizes will be awarded.



THE MOONLIGHT REGATTA

SAILING INSTRUCTIONS

19 July 2008

The Rudder Club of Jacksonville

8533 Malaga Avenue

Orange Park, FL 32073, USA

1 RULES

- 1.1 The regatta will be governed by the rules as defined in the current *Racing Rules of Sailing* (RRS), the rules of the First Coast Sailing Association, and by these Sailing Instructions.
- 1.2 All US SAILING Prescriptions will apply.
- 1.3 The Regatta is designated Category A.

2 NOTICES TO COMPETITORS

Official notices to competitors will be posted on the notice board located on the north exterior wall of the Rudder Club. Notices may also be published on the Gator Bowl Web Site at <http://www.rudderclub.com>.

3 CHANGES IN THE SAILING INSTRUCTIONS

Any change in the Sailing Instructions will be posted on the Official Bulletin Board on the Rudder Club north wall and on the Web Site. Changes after 1800 19 July will be in the form of a Notice to Competitors except that any change to the schedule of races will be posted by 2000 on the day before it will take effect..

4 SIGNALS MADE ASHORE

- 4.1 Signals made ashore will be displayed from the flag pole located on the north side of the Rudder Club.
- 4.2 Code Flag "AP", Answering Pennant, displayed ashore with two sound signals (one when lowered) means "The race is postponed" The warning signal will be made not less than 45 minutes after "AP" is lowered.

5 SCHEDULE OF RACES

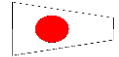
- 5.1 One race is scheduled.
- 5.2 Class divisions will be posted on the Official Bulletin Board.
- 5.3 Schedule:
Registration 1800 - 1845
Sailors Meeting 1900
Warning signal for first class: 1955.

6 CLASS FLAGS

Class flags will be the International Numeral Pennants as depicted under Race Signals in the RRS

Class	Pennant
-------	---------

Spinnaker	P1
-----------	----



Non-spinnaker	P2
---------------	----



7 RACING AREA

The racing area will be in the St. Johns River between the Buckman Bridge to the south and the Fuller Warren Bridge to the north as depicted on NOAA Chart 11492.

8 THE COURSE

- 8.1 Race courses will be announced at the sailor's meeting.

9 MARKS

- 9.1 Marks will be government navigation marks as depicted on NOAA Chart 11492 (as corrected by Notices to Mariners). Government marks will be designated by their number as appearing on the chart.
- 9.2 A limiting mark may be set to protect the committee boat close to her and on the same end of the starting line. No yacht shall pass between the limiting mark and the committee boat. (This limiting mark is not a mark of the course.)

10 START

- 10.1 The Starting Line will be a line between an orange flag flown on the Race Committee/Signal Boat and a mark set toward the left side of the course from the Committee Boat.
- 10.2 Boats whose warning signal has not been made shall remain clear of the starting area.

11 THE FINISH

The Finish Line will be between a mark set off the Rudder Club dock and an orange flag displayed on the dock.

12 TIME LIMIT

The time limit shall be 3 hours for each class. Yachts failing to finish within 45 minutes corrected time after the first yacht of their class finishes will be scored "Did not Finish." This changes rule 35 and rule A41.

13 PROTESTS AND REQUESTS FOR REDRESS

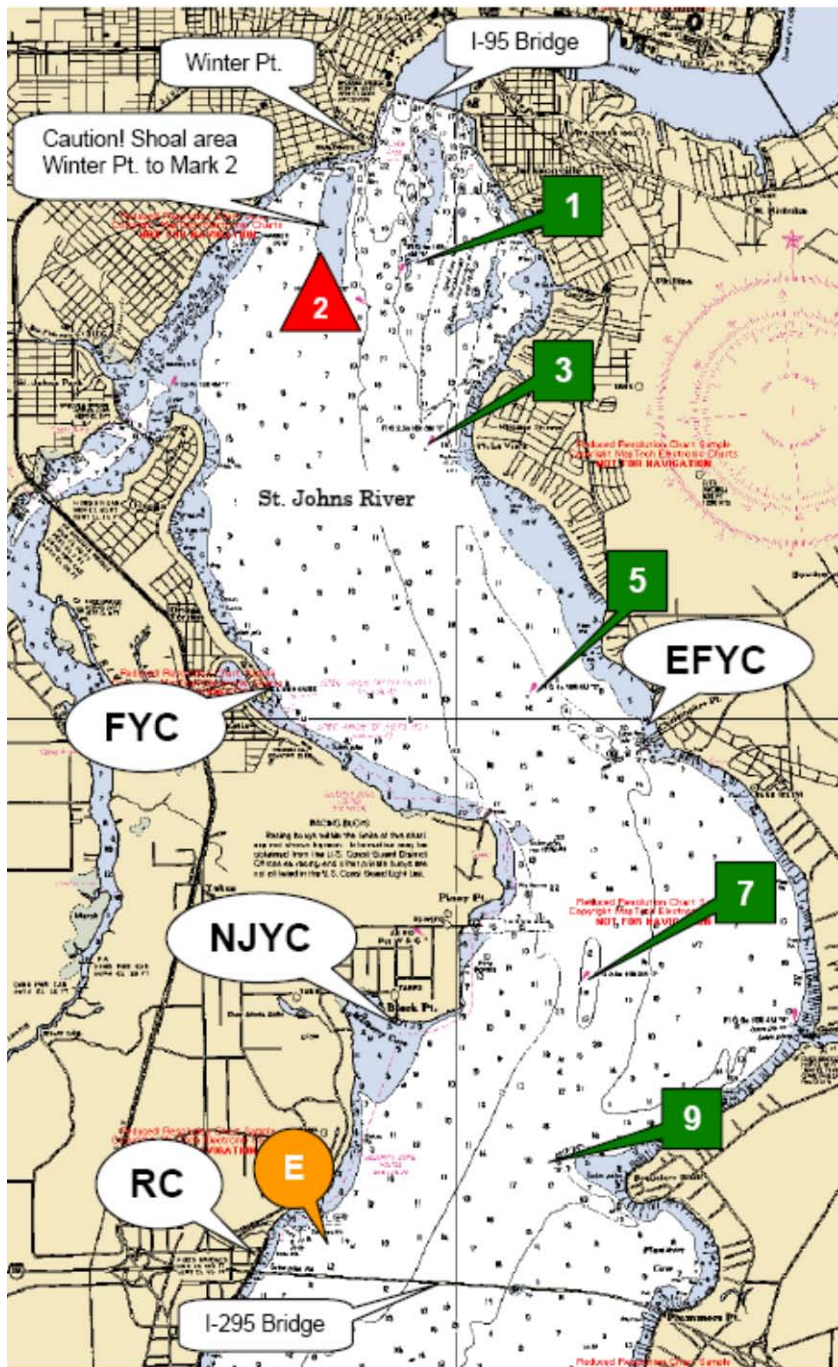
- 13.1** Protests shall be written on forms available at the Rudder Club. They shall be filed with the Regatta Chairman. Protest time will end 90 minutes after the last boat has finished the last race of the day. Protests will be heard in the approximate order received.
- 13.2** Protest notices will be posted on the Official Bulletin Board within 30 minutes following the protest time limit.

14 SAFETY

- 14.1** Boats shall attempt to check in with the Race Committee by sailing past on the non-course side prior to their class Warning Signal.
- 14.2** Boats withdrawing from a race prior to finishing shall make every effort to ensure that Race Committee is notified that they have dropped out
- 14.3** All competitors are required to conform with the U.S. Coast Guard regulations and the RRS concerning personal floatation devices and other required equipment.
- 14.4** Yachts shall not impede the passage of a vessel which can safely navigate only within a narrow channel, and give way to commercial fishing vessels while fishing or vessels with restricted ability to maneuver.

15 PRIZES

Results will be announced at the Rudder Club following the race. First, second, and third place prizes will be awarded for each class.



Race Marks
GPS Position

1	N30° 17.798'
	W81° 40.440'
3	N30° 16.723'
	W81° 40.219'
5	N30° 15.013'
	W81° 39.470'
7	N30° 13.312'
	W81° 39.078'
9	N30° 12.272'
	W81° 39.241'
E	N30° 11.700'
	W81° 40.900'

Range and Bearing between I

From	To	Range n.m.	Beari Mag.
E	7	2.3	048°
E	9	1.5	073°
1	3	1.1	175°
1	5	2.8	168°
3	1	1.1	355°
3	5	1.7	163°
3	7	3.7	169°
5	1	2.8	348°
5	3	1.7	343°
5	7	1.9	175°
5	9	2.9	181°
7	E	2.3	229°
7	1	4.6	350°
7	3	3.6	349°
7	5	1.9	355°
7	9	1.1	193°
9	E	1.5	253°
9	5	2.9	001°
9	7	1.1	013°