

NFCC FERNANDINA RACE

NOTICE OF RACE AND SAILING INSTRUCTIONS

DATE AND PLACE: April 11, 1987, Saturday, 1000 Hrs. E.S.T.: Atlantic Ocean - Mayport Jetties to St. Mary's River Channel Markers.

REGISTRATION: The Standard Race Entry Blank accompanying this notice must be completed in full and either: mailed to the following address to be received no later than April 10, 1987, or delivered by hand to the Race Committee no later than 5pm, Friday, April 10, 1987. Mail entries, completed in full, to: L. L. Hawkins, 2403 Market Street, Jacksonville, Florida 32206. All entries must be accompanied with full entry fee. The Race Committee assumes no responsibility for delivery of entries submitted by mail. Any doubt about sufficiency of registration should be resolved by verifying with the Race Committee its receipt, of completed entry, by telephone at 353-7344.

ENTRY FEE: All entrants - \$10.00.

ELIGIBILITY: All yachts racing will be assigned to classes and are required to have a current and valid PHRF rating certificate issued by U.S.PHRF of N.E. Florida. No entry will be accepted from any yacht which is less than 20 feet in length overall. This is a category 4 race, as regards to minimum equipment and accommodations.

CLASSES: The fleet will be divided into PHRF classes, both spinnaker and non-spinnaker.

MANAGEMENT: The race will be under the management of the North Florida Cruising Club as the organizing authority.

RACING RULES: This race will be governed by the current Racing Rules of the International Yacht Racing Union, as adopted by the U.S. Yacht Racing Union, and these Sailing Instructions. Any yacht not in compliance with Rule 25.2 (b) (sail numbers) will be penalized five (5) seconds per mile, but will still be eligible to compete.

SKIPPER'S MEETING: There will be no Skipper's Meeting.

CHECK IN: All yachts must check in with the Race Committee at least 15 minutes prior to the start by sailing past the stern of the Committee Boat and hailing their sail numbers, which hail shall be acknowledged by the Race Committee. Yachts not properly checking in prior to starting will be scored DNS. Scratch sheets will be available from the Committee Boat.

START: Warning signal at 0950 Hrs. and start at 1000 Hrs: spinnaker and non-spinnaker boats will start together.

COURSE: Proceed in an easterly direction from the starting line to St. John's channel buoy R "2 StJ" leaving it to Port, thence to Nassau Sound buoy N "6A" leaving it to starboard and thence to finish line.

FINISH: Between St. Mary's Channel buoy C "3" and the Committee Boat anchored due west of C "3". If the committee boat is not on station, take your own time as you cross an imaginary line between C "3" and "5", and within 100 meters of C "3".

TIME LIMIT: None

SHORTENING COURSE: The Race Committee, after the starting signal, may shorten the course by finishing the race at any Government Marker. A shortened course will be signaled by two (2) sound signals and displaying from the committee boat code flag "S", which means "Finish" between the nearby mark and the committee boat.

INDIVIDUAL RECALL: Will be signaled by displaying code flag "X" with one (1) sound signal. The Race Committee will attempt to hail the sail numbers of the yachts concerned.

GENERAL RECALL: Will be signaled by displaying code flag "First Substitute" with two (2) sound signals. After a general recall has been signaled, a new preparatory signal will be made one minute after the lowering of code flag "First Substitute" with one cannon.

PENALTIES: The 720 turns penalty as provided in Rule 74.5 and Appendix 3. Alternative penalties for infringement of a Rule of Part IV, shall apply for infringement of a rule of Part IV.

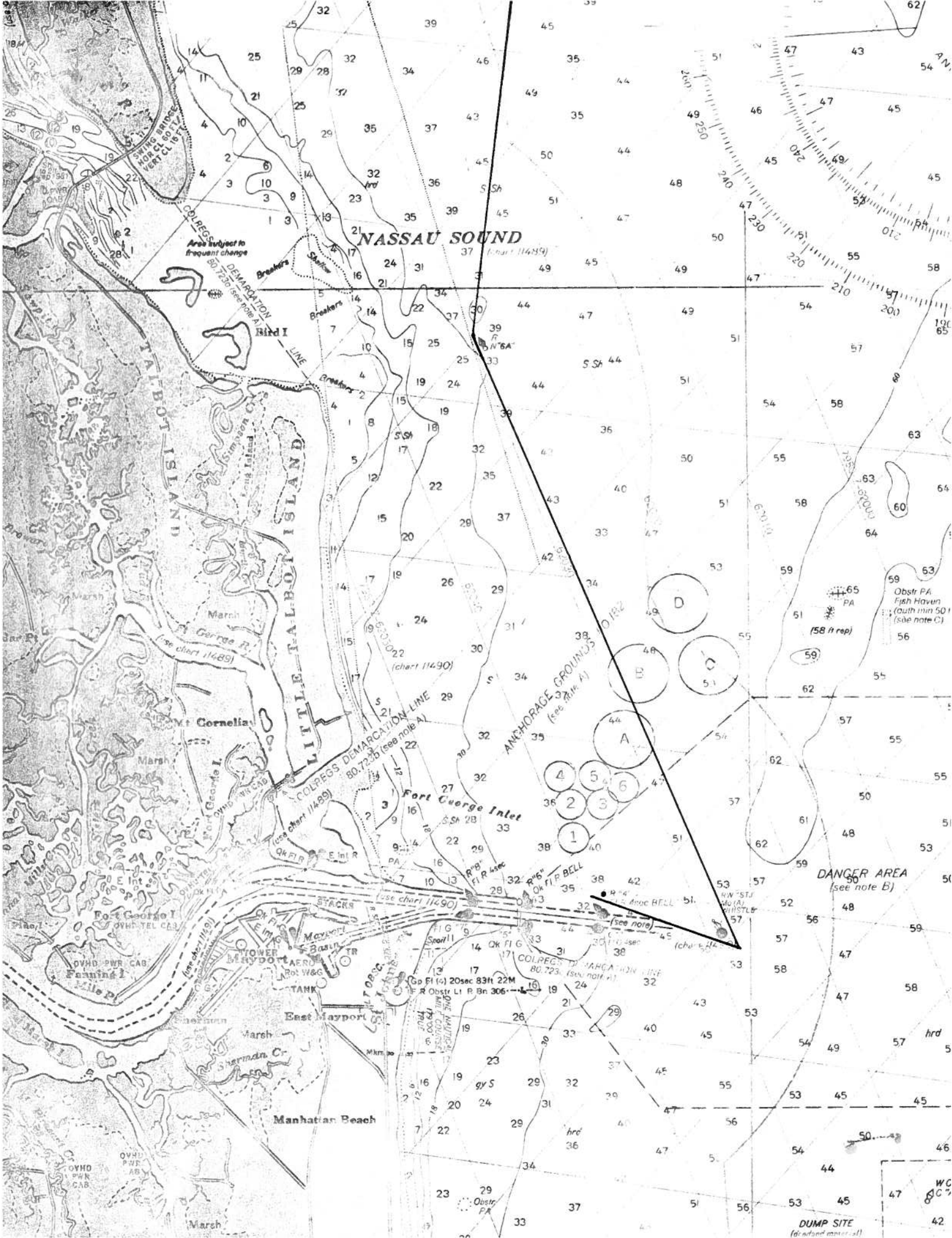
RETIREMENT: Any yacht retiring from the race shall notify the Race Committee as soon as possible so that all participants may be accounted for.

PROTESTS: All protests must be presented in writing to the Race Committee within 24 hours after the race. Notice of a protest must also be given immediately after finishing by a "Hail" acknowledged by the Race Committee.

POSTPONEMENT AND ABANDONMENT: Postponement will be signaled by the displaying of code flag "AP" and two (2) sound signals. Warning signal will be made one (1) minute after lowering "AP" flag. Abandonment will be signaled by "N" and three (3) sound signals.

RESULTS: Finishing order will be scored by corrected time based on PHRF rating applied to elapsed time. Ties will not be broken. Race results will be mailed to each skipper, and will also be published in the edition of the Windscoop following the race. Trophies will be awarded at the next meeting of NFCC.

GOOD LUCK AND GOOD SAILING!



**NASSAU SOUND**  
(Chart 11489)

Area subject to frequent change

COLREGS DEMARCATION LINE  
80.725 (see note A)

**TALBOT ISLAND**  
Marsh  
George R.  
(see chart 11489)  
**LITTLE TALBOT ISLAND**  
Marsh  
Cornelia  
Marsh  
George I.  
Marsh  
East Mayport  
Manhattan Beach

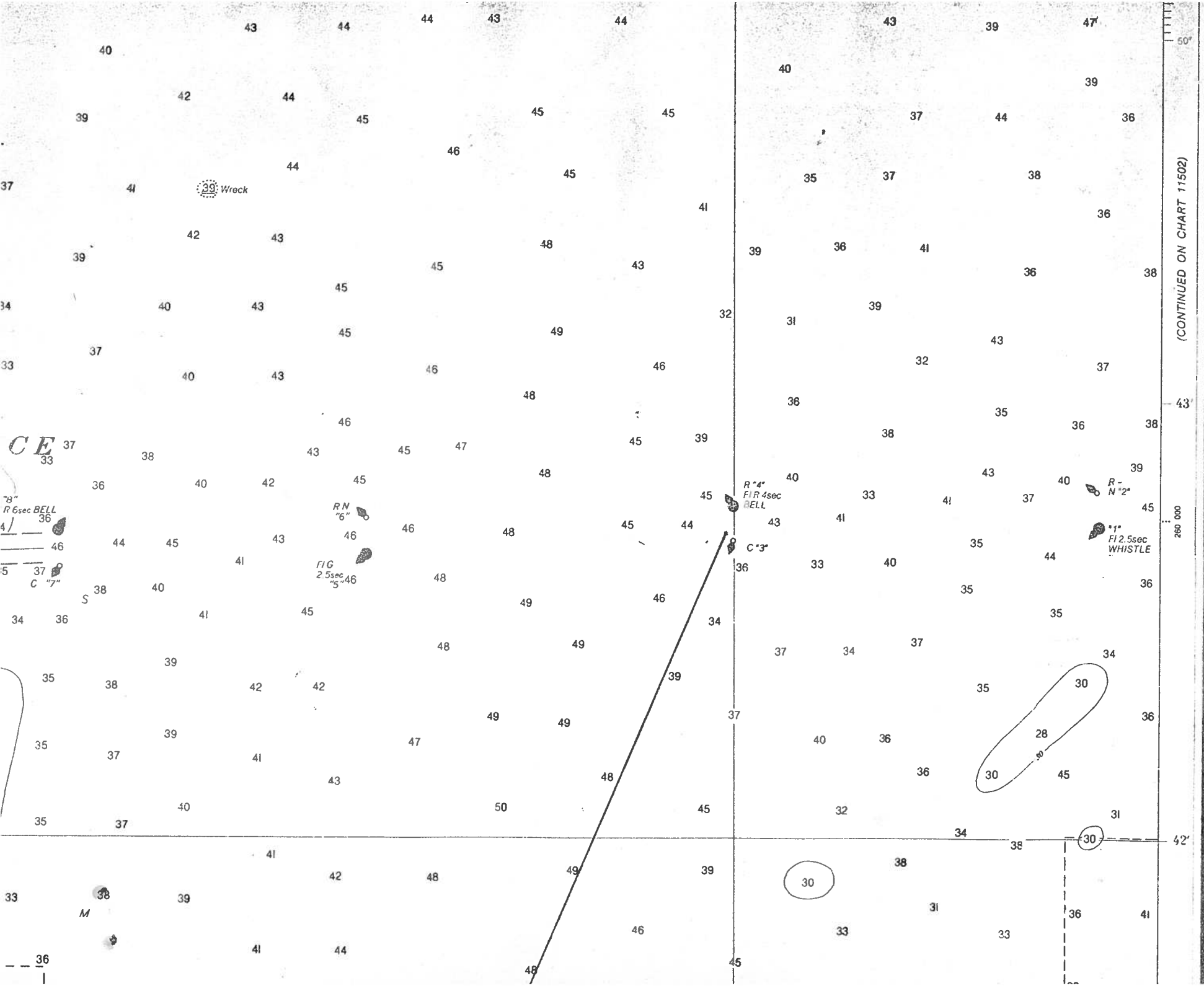
COLREGS DEMARCATION LINE  
80.725 (see note A)

ANCHORAGE GROUNDS  
(see note A)

**DANGER AREA**  
(see note B)

**DUMP SITE**  
(dead-end moorings)

WC  
GC



*CE* 37  
33

"8" R 6sec BELL 36  
4/ —  
15 — 37 C "7"

RN "6"  
FIG 2.5sec "5" "46"

R "4" FIR 4sec BELL  
C "3"

R - N "2"  
FI 2.5sec WHISTLE

(CONTINUED ON CHART 11502)

280 000

36  
|